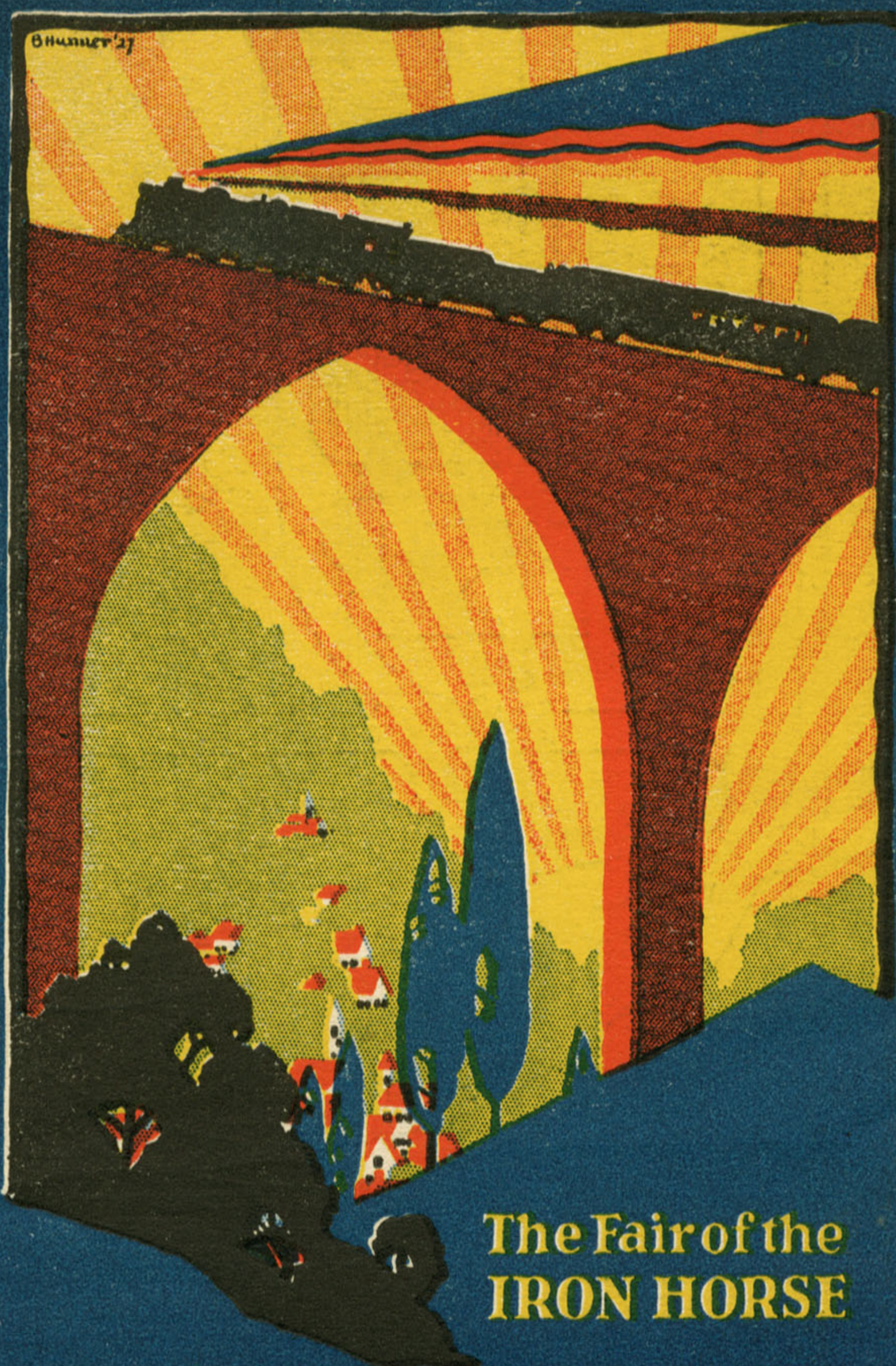
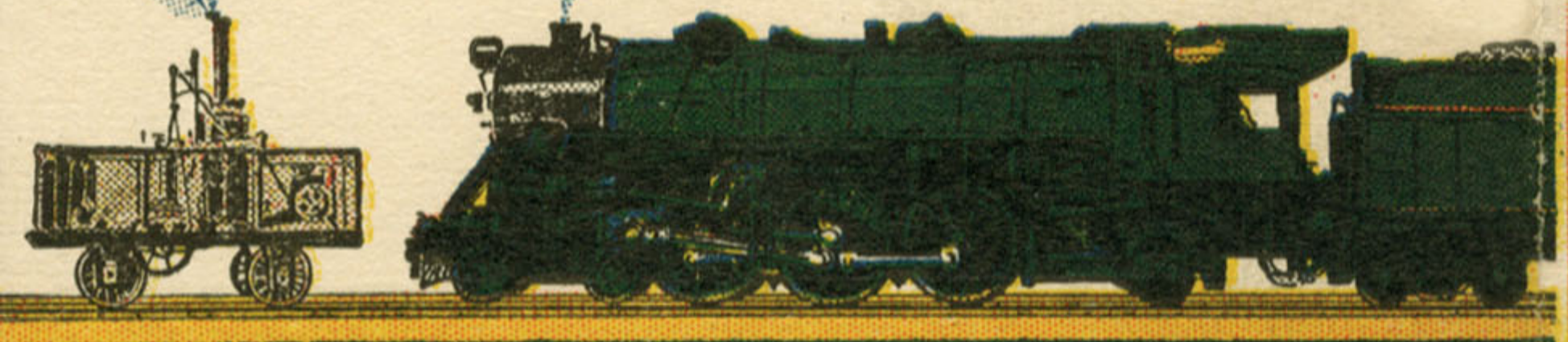


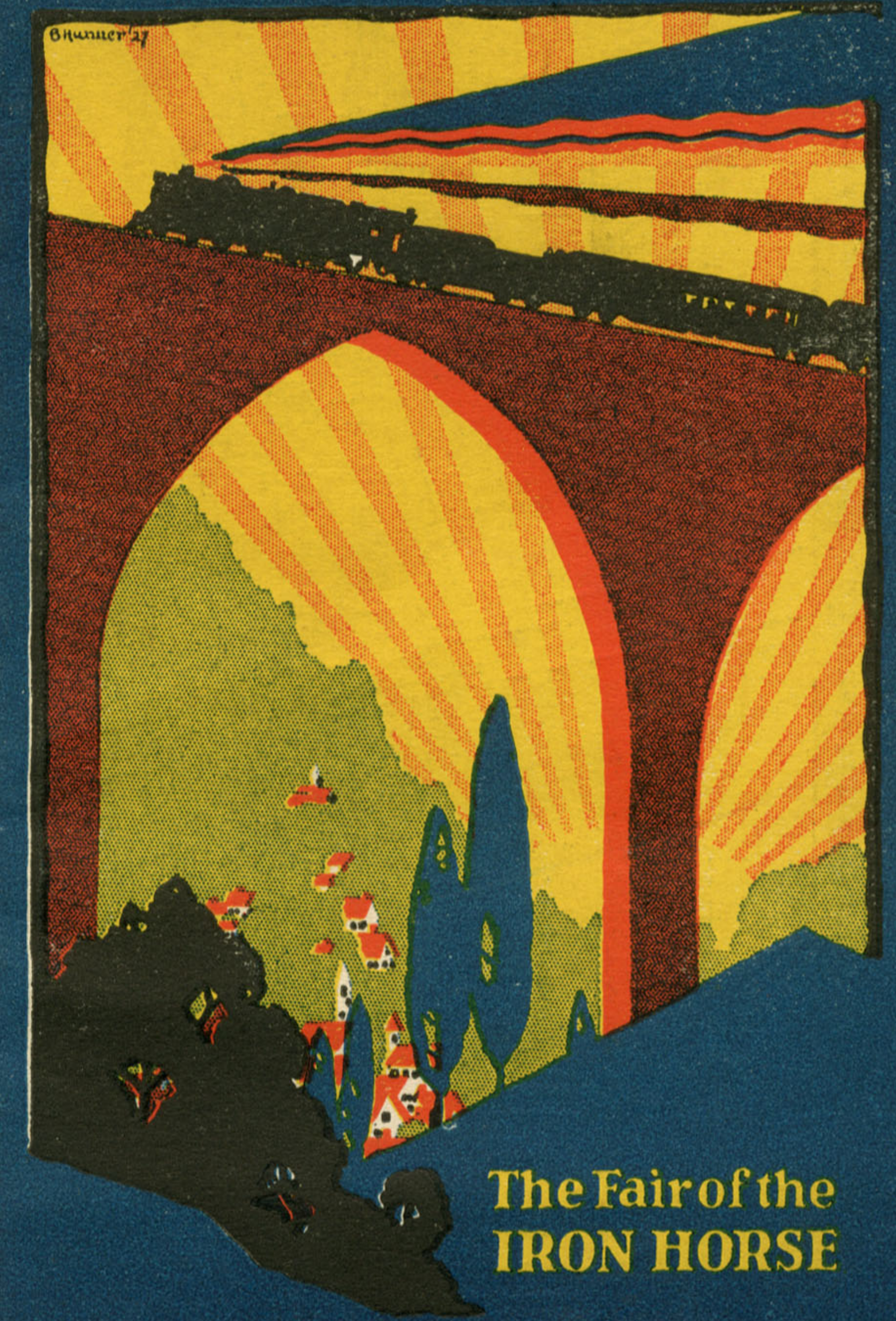
1827
1927



The Fair of the
IRON HORSE

CENTENARY EXHIBITION *and*
PAGEANT *of the* **BALTIMORE & OHIO**
RAILROAD *to be held at* **BALTIMORE**

September 24th... October 8th... 1927



The Fair of the
IRON HORSE

CENTENARY EXHIBITION *and*
PAGEANT *of the* **BALTIMORE & OHIO**
RAILROAD *to be held at* **BALTIMORE**

September 24th... October 8th... 1927

... The Fair of the Iron Horse ...

THE Centenary Exhibition and Pageant of the Baltimore and Ohio to be held in a suburb of Baltimore (Halethorpe), Maryland, from September 24th to October 8th, will be different from anything you have ever seen--a genuine novelty in the way of an entertainment which likewise will be both thoroughly interesting and unexpectedly educational.

This World's Fair of Transport--dramatic and colorful--will portray both the birth and the development of inland transportation in America as it has progressed through the first hundred years. In other words, that which the national automobile shows of recent times has done for the motor car The Fair of the Iron Horse will do, in even greater detail, for the numerous and varied activities of the Iron Horse and its world.

So much of out-of-the-ordinary interest is promised, that President Coolidge has declared his intention of being present on the opening day. There will be a Maryland Day, a

Pennsylvania Day, a Virginia Day--other special occasions, when other personages of unusual prominence in all walks of life will be present--and, of course, a Baltimore Day, when it is expected that all Baltimore will declare a holiday and honor its home-town railroad which for one hundred years has been inseparably associated with the advancement and progress of the fascinating and comfortable-to-live-in city on the Chesapeake.

No admission will be charged; reserved seats too will be free; frequent shuttle-train and motor-bus service from and to down-town Baltimore; accommodations for 50,000 visitors; parking space for 3,000 automobiles, ample restaurant and lunch-stand facilities; groves for picnic parties. Excursion fares and train service from Baltimore and Ohio points will be announced in due time.

You are cordially invited to be present. Bring the family! Tell your friends!

THE CENTENARY DIRECTOR, *Baltimore and Ohio Railroad*, Baltimore, Maryland



1835

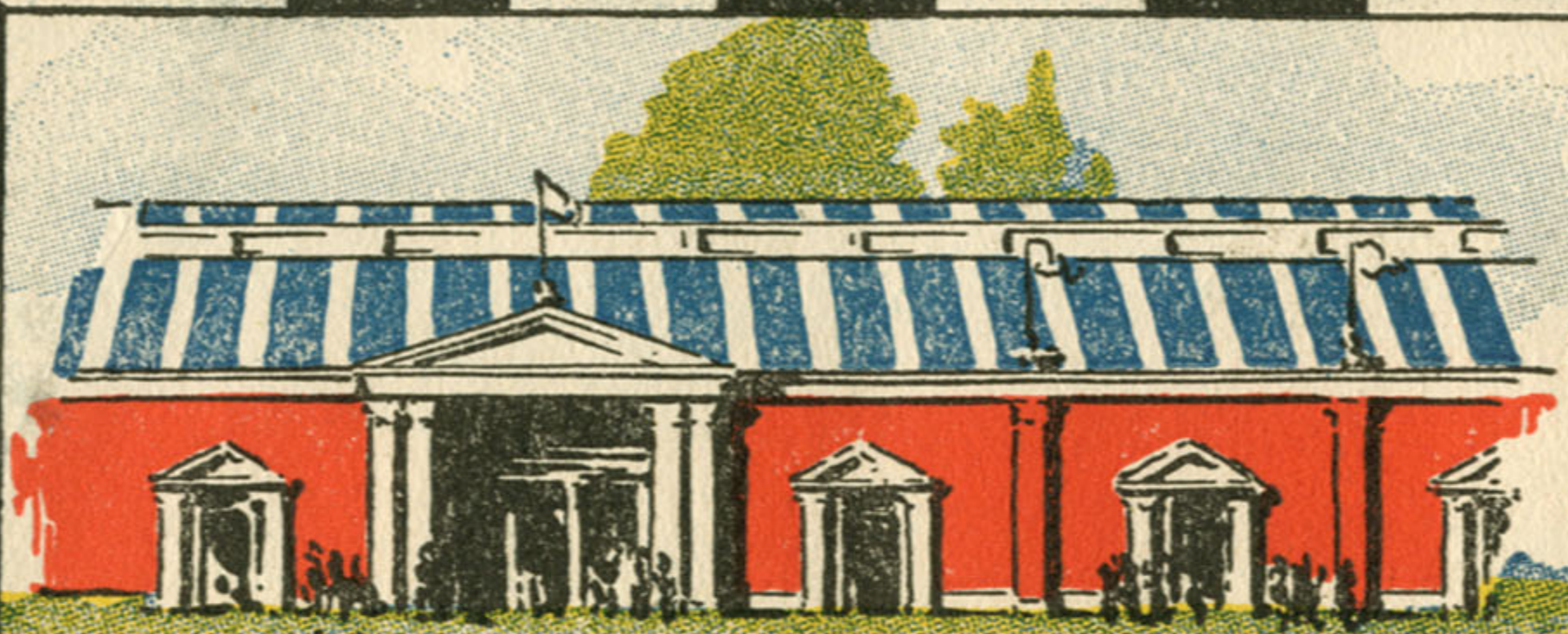
1848

1856

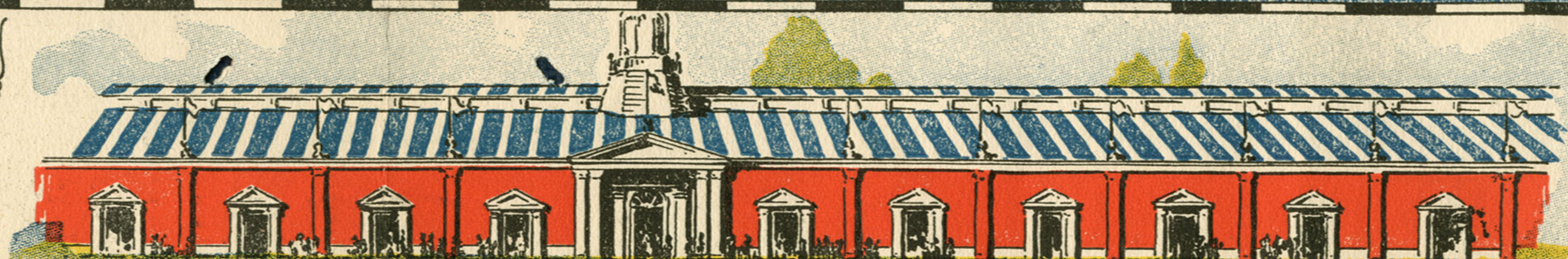
1863

1893

1925



2 Allied Services Building



1 Hall of Transportation

This Hall of Transportation (502 feet long) will house a museum depicting the physical development of the Baltimore and Ohio through the first hundred years of its existence. In it will be shown fifty full-size wooden models of the early engines of the world; miniature models showing the progress of the development of locomotives, cars, bridges and other accessories of the steel highway through the century--all in a fitting and colorful setting.

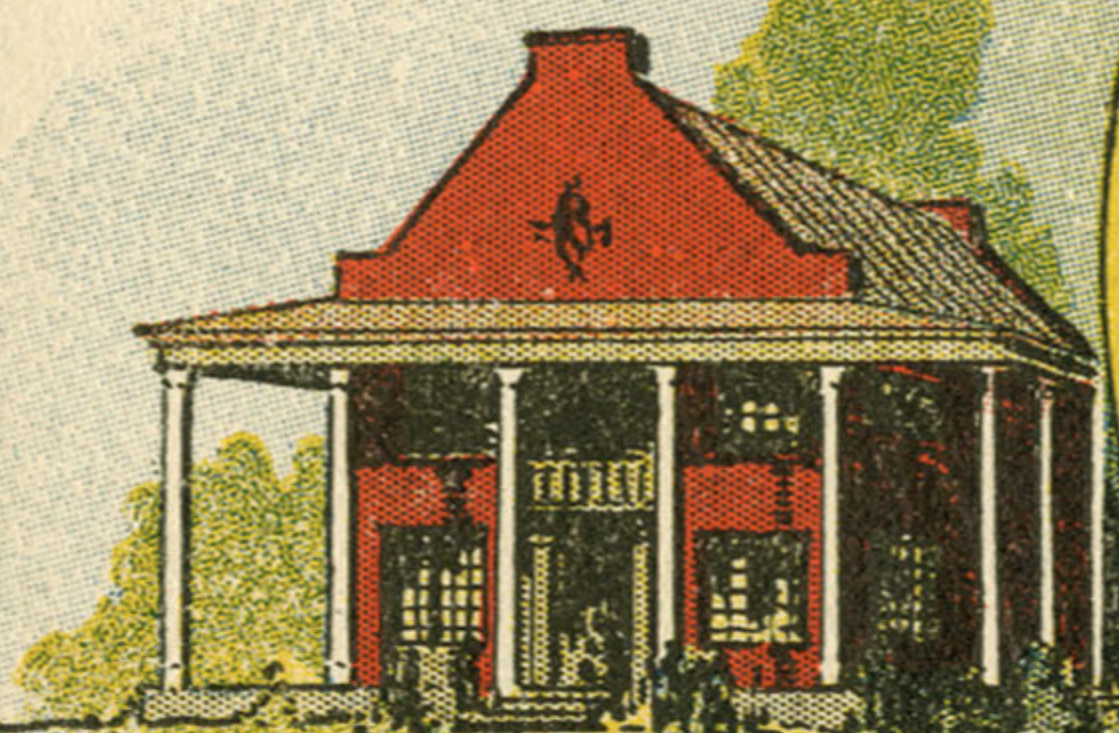
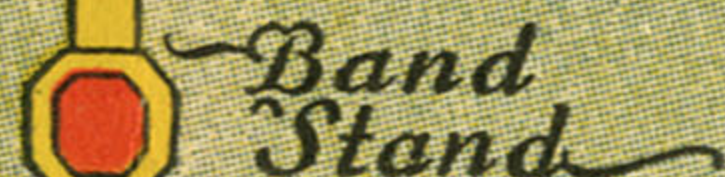
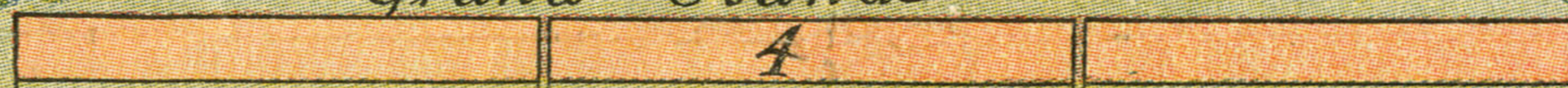
The Allied Services Building exhibits will portray the activities of the major associated services of the Iron Horse and its world--the telegraph (which was born on the Baltimore and Ohio), from its inception to the trans-ocean cable machine; the telephone, which, like the telegraph, is an important working ally; the express, from the package-carrying, stage-coach driver to the present world-wide service, and the super-efficient, far-reaching railway mail service in all its myriad ramifications.

West Bound Station Platform
Main Line - Baltimore & Ohio R.R. - New York, Philadelphia, Baltimore and Washington, to Pittsburgh, Cleveland, Detroit, Chicago, Cincinnati, Louisville and St. Louis
Parking Space for 3,000 cars

Subway

Grand Stand

East Bound Station Platform



5 Old Tavern

The Old Tavern will be an interesting replica of an early-day inn upon the National Road in Maryland. It will be used as an Administration Building. Scattered about the grounds there also will be a coffee house and a number of refreshment and souvenir booths.

Concessions

Hall of Transportation

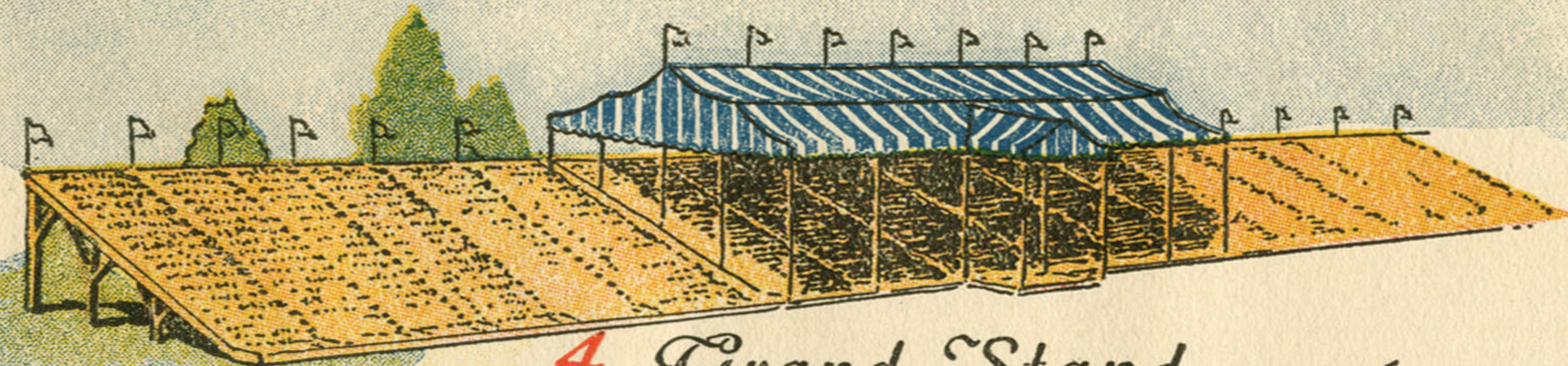
Exhibit Tracks

While the Baltimore and Ohio Centenary Band sounds the notes of the outstanding and popular airs of the last century, the drama of transport--five miles in length, depicting the beginning and gradual unfolding of inland transportation--from the early travois of the Indians through the crude and slow wagon haulage of pioneer days to the speed, luxury and efficiency of 1927, will move across this 25-acre Court of Honor.



3 Traffic Building

In the Traffic Building will be shown some of the co-operative activities of the railroad--the scientific location of industries; the development of geological resources; increasing the productivity of soils by working with the farmers; helping employes to become home owners, safety first and other kindred movements.



4 Grand Stand

This 800-foot-long grand stand will provide an advantageous and restful viewpoint from which to enjoy the Centenary Pageant as well as the panorama of The Fair of the Iron Horse in its entirety. Seats will be reserved and made available to the public as long as the supply lasts.