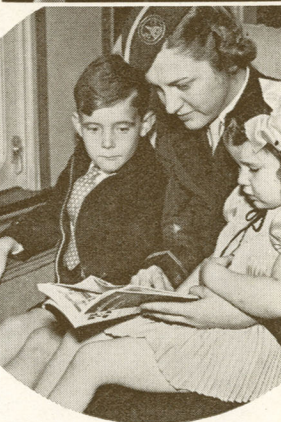


Extra Comfort for COACH PASSENGERS

COACH COMFORT is more than an expectation to those who travel via Baltimore & Ohio—it is an attainment. For instance, B & O coaches are not just ordinary coaches. They are equipped with rubber-cushioned 6-wheel trucks to reduce vibration and promote riding comfort. Then, too, on principal Baltimore & Ohio trains, the coaches are especially designed, with individual reclining chairs, linen head-rests, foot-rests and backs that can be adjusted for perfect relaxation. You have clean, attractive smoking rooms; sanitary lavatories for men and women; modern washrooms, with free soap and towels. And on the National Limited (Diesel-powered) from St. Louis, and the Shenandoah from Chicago, to New York, there are Stewardess-Nurses for the special convenience of coach passengers; also tray meal service right at your coach seat.



(Upper) Coach passengers may relax in perfect comfort in Individual Reclining Chairs.
(Lower) Stewardess-Nurse Service—especially helpful to women and children.

Rubber-cushioned, 6-wheel trucks on all B & O cars add to the comfort of your trip.

You'll Marvel at the Wonders of Tomorrow Reflected in the NEW YORK WORLD'S FAIR

May 11 to October 27, 1940
Open to Visitors
Exhibit Area—10.00 a. m. to 10.00 p. m.
Amusement Area—10.00 a. m. to 2.00 a. m.
(These hours are Daylight Saving Time from Sunday, May 12, to Sunday, September 29, inclusive.)

THE New York World's Fair last year was acclaimed the most spectacular of all World's Fairs.

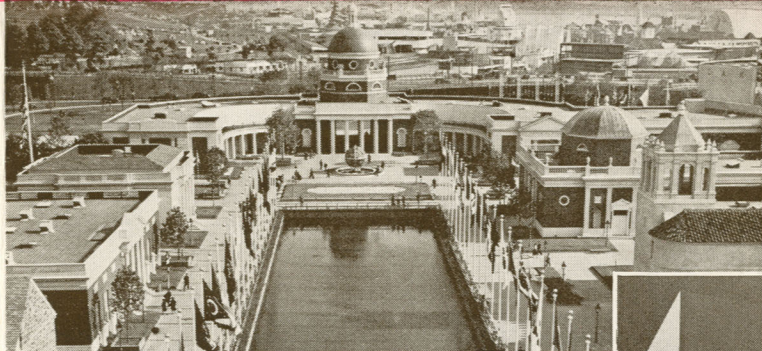
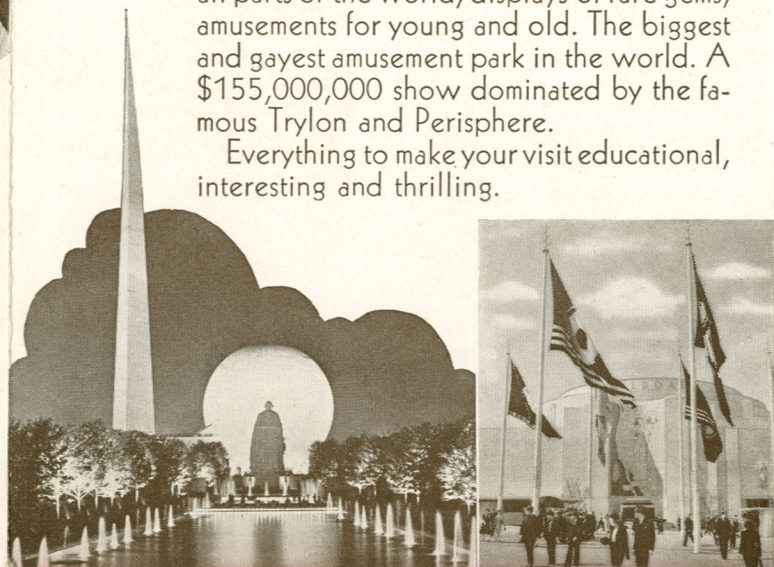
This year a host of colorful new exhibits has been added . . . new amusements . . . new attractions . . . and the admission prices have been reduced to 50c for adults; 25c for children.

There are 1500 free exhibits . . . plenty of rest rooms . . . restaurants and lunch counters, where you can eat plentifully, at popular prices.

Spacious picnic grounds, free for your enjoyment . . . cool fountains . . . shade trees and millions of flowers.

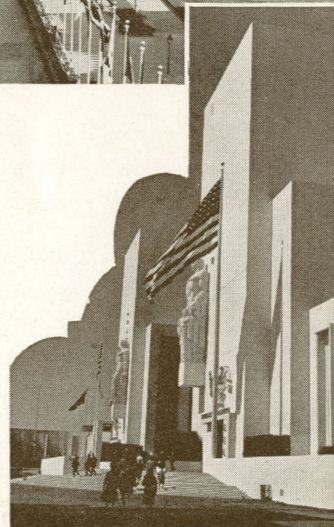
Every state in the Union and many foreign countries are represented at the Fair—wonders from all parts of the world, displays of rare gems, amusements for young and old. The biggest and gayest amusement park in the world. A \$155,000,000 show dominated by the famous Trylon and Perisphere.

Everything to make your visit educational, interesting and thrilling.



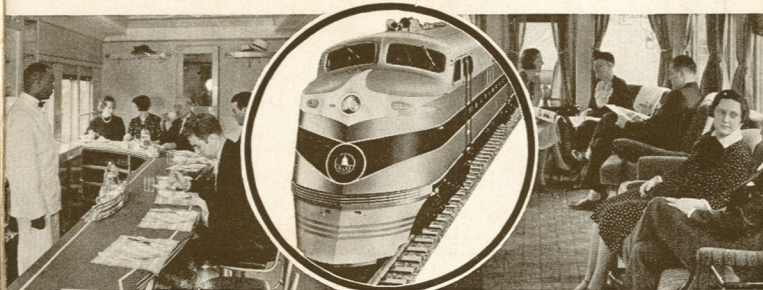
RAILROAD EXHIBIT

ONE of the most interesting exhibits at the Fair is the railroad exhibit, housed in a million dollar building—the largest on the Fair site. Here is the most complete display of railway exhibits, American and foreign, ever assembled in World's Fair history—such feature attractions as Edward Hungerford's dramatic pageant "Railroads on Parade," the little "Tom Thumb"—the first steam engine used on the B & O in 1829. Also large scale scenic dioramas "Railroads at Work" and "Railroads in Building." Plan now to enjoy the amazing wonders of the New York World's Fair—a trip that will live long in your memory.



Enjoy Your First World's Fair Thrill

on B & O's
Diesel-Powered Streamliners
ROYAL BLUE or COLUMBIAN



THE ONLY Streamlined, Diesel-powered trains between Washington, Baltimore, Wilmington, Philadelphia and New York. Distinctive in design . . . in decoration . . . in appointments . . . they reflect today's most advanced travel ideas in comfort and convenience. So smooth-riding and so quiet, it's like gliding. The perfect train ride—made possible by Diesel-power.

Parlor Cars. Cafe-Lounge-Observation Cars. Dining Cars with Table and Tavern Counter Service. Reclining Chair Seats in Coaches are reserved free.

Other fast trains at convenient hours to and from New York. All principal B & O trains are Air-conditioned. No Extra Fare on any train.

WASHINGTON, D. C.
D. L. MOORMAN
General Passenger Agent
1508 H Street, N.W.
Phone: District 3300

BALTIMORE, MD.
J. R. HAYES
Division Passenger Agent
Baltimore & Charles Streets
Phone: Plaza 0400, Br. 425

PHILADELPHIA, PA.
R. E. COLEMAN
Division Passenger Agent
Broad & Walnut Streets
Phone: Rittenhouse 4500

WILMINGTON, DEL.
C. F. MILLER, Traveling Passenger Agent
921 Market Street
Phone: 8204

ANNAPOLIS, MD.
C. E. BRANT, Ticket Agent
54 Maryland Avenue
Phone: 2994

B&O BARGAIN FARES

The
New York
WORLD'S
FAIR



You See More When You Travel via
BALTIMORE & OHIO

SEE THE "WORLD OF TOMORROW" AT THE NEW YORK WORLD'S FAIR... The Thrill of a Lifetime...

No matter when you want to go—
or how long you plan to stay . . .
B & O offers you a variety of Special Low Fares

ROUND TRIP FARES

FROM	A	B	C
Washington, D. C.	\$4.50	\$5.85	\$8.10
Baltimore, Md.	4.00	5.20	7.10
Annapolis, Md.	4.70	5.55	7.65
Wilmington, Del.	2.50	3.45	4.40
Chester, Pa.	2.50	3.05	4.00

PROPORTIONATE LOW FARES FROM OTHER POINTS

- A**—Rail tickets good in Coaches only. One Day Limit. On sale week-days. Commencing May 11. Good on specified trains going and any train returning same day, up to 1.00 A. M. following day.
- B**—Week-end in Coaches only. Leave Friday or Saturday on specified trains. Return on any train Saturday or Sunday up to 1.00 A. M. Monday.
- C**—Good in Coaches only. 60-Day Limit. On sale daily. Good on all trains going and returning. Also ask about Sunday and Holiday Excursion fares . . . Special Fares for organizations, and All-Expense Tours for individuals and groups.

See the New York and San Francisco World's Fairs . . . at one fare

\$90 for rail tickets in Coaches
THIS Summer, you may travel from your home to the San Francisco World's Fair, thence to the New York World's Fair, without retracing of routes. Or, you may go first to the New York World's Fair, thence to the Pacific Coast and return home. You may choose any route you prefer and stop-over



privileges at all points will be accorded in both directions. Under this unique low-fare plan, you may purchase a "Grand Circle" ticket, good in Coaches only, for \$90; or a rail ticket for \$135 good in Pullman cars, plus reduced charges for Pullman accommodations. On sale daily.

\$135 for rail tickets in Pullmans



New York's Magnificent Skyline As Seen by Baltimore & Ohio Passengers

© IRVING UNDERHILL

You See the REAL New York when you go via B & O

WHEN YOU arrive in New York on the Baltimore & Ohio—and when you leave—you have the exceptional opportunity to see the *real* New York—the wonderful architectural panorama of its magnificent skyline . . . its gigantic buildings that rear upwards hundreds of feet from the river's edge. The famous Statue of Liberty . . . Governor's Island and Battery Park (with its renowned aquarium and its ever vigilant fire patrol boats) . . . historic Ellis Island . . . its teeming river traffic, ships from all parts of the world . . . the colorful East Side—and a host of other attractions that have made New York the world's "Sightseeing Metropolis."

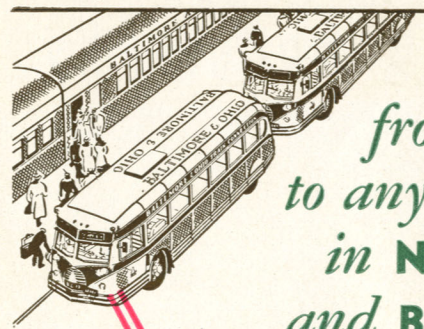
You will find this way of going to the New York

World's Fair not only convenient and easy, but packed with experiences, and things to see, that will add immeasurably to the pleasure of your trip.

What to see in New York

On your way to or from the World's Fair, don't miss the opportunity to see New York. No other city in the world offers more to the sightseer and tourist—places you have heard about and read about. See Broadway at night, Fifth Avenue with its inviting stores and shops, Rockefeller Center, Radio City Music Hall, Grant's Tomb, Central Park, famous theatres and night clubs—and numerous other places that will make your visit to New York unforgettable.

B & O MOTOR COACHES



to take you from trainside to any of 17 places in NEW YORK and BROOKLYN

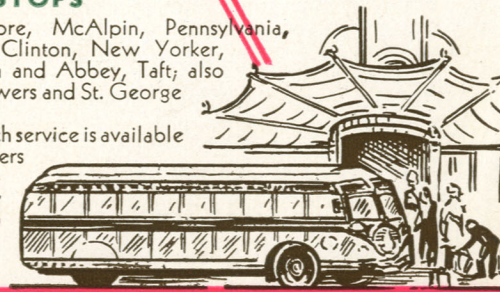
WHEN YOU go to the World's Fair, remember Baltimore & Ohio is the only railroad offering Train Connection Motor Coach Service. You simply step from the train into a comfortable, streamlined Motor Coach and ride, with your hand bags, to any one of 17 stations or stops in New York City and Brooklyn—including many leading hotels. No long walks—no confusion—no taxis—no tips. The convenient way to enter and leave New York.

STATIONS

42d St. opp. Grand Central Terminal and Commodore Hotel. Rockefeller Center, 49th St. and Rockefeller Plaza. 15 Columbus Circle; 35 W. 33d St. near Broadway; New York. Brooklyn Station, Eagle Bldg., Washington and Johnson Sts.

STOPS

Hotels Commodore, McAlpin, Pennsylvania, Lincoln, Governor Clinton, New Yorker, Vanderbilt, Victoria and Abbey, Taft; also Wanamakers, The Towers and St. George Hotels, Brooklyn.
(B&O Motor Coach service is available to all B & O passengers free, except on special one-day Sunday Coach Excursions.)



TRAVEL BALTIMORE & OHIO - THE SIGHTSEEING ROUTE . . . Open Air all the Way . . .