

# RAILROADS ON PARADE

Dramatic Musical Extravaganza with  
Cast of 250 • Fifteen Thrilling  
Scenes of Drama, Music, Comedy,  
with 50 Horses, 20 Locomotives on  
the World's Largest Stage

Acclaimed as the finest stage spectacle of  
the 1939 New York World's Fair, the new  
Railroads on Parade is even more thrilling  
—the most gigantic spectacle ever presented  
on one stage—the most dramatic moments  
in the history of transportation in our great  
country . . . the trek on the Overland Trail,  
Abraham Lincoln on the way to his inaugu-  
ration in Washington, the completion of the  
first transcontinental railroad at Promontory  
Point, Utah, and many other stirring scenes.

This is the show that left noted critics  
gasping for adjectives. Here's what they  
said: "Deserves a 21-gun salute," Robert  
Coleman—"Catches the romance of human  
progress," Brooks Atkinson—"A most thrill-  
ing exhibit," George Ross—"The visualiza-  
tion of a national epic," Lucius Beebe—  
"Exciting and elaborate," *Time Magazine*—  
"Not to be missed," *Stage Magazine*—  
"Nothing has stirred this writer more," H. I.  
Phillips.

4 performances daily

11:30 a.m., 1:30 p.m., 3:30 p.m., 5:30 p.m.

4,000 seats, 25 cents

*Don't Miss Seeing*

## RAILROADS IN ACTION

The largest model railroad in the world, with  
5,000 feet of track, 60 locomotives, and 500 cars,  
shows the railroad performing its everyday tasks.  
Continuous performances from 10 a.m. to 8 p.m.

**BUILDING THE RAILROAD:** Animated dioramic  
display, showing the construction of railroads  
and the building of equipment.

**TRACK EXHIBIT:** Actual trains and locomotives,  
including the BIG ENGINE, world's largest and  
most powerful steam locomotive.

*See the  
Hit Show  
at the Fair*

*See the  
Hit Show  
at the Fair*



**RAILROADS  
ON PARADE**

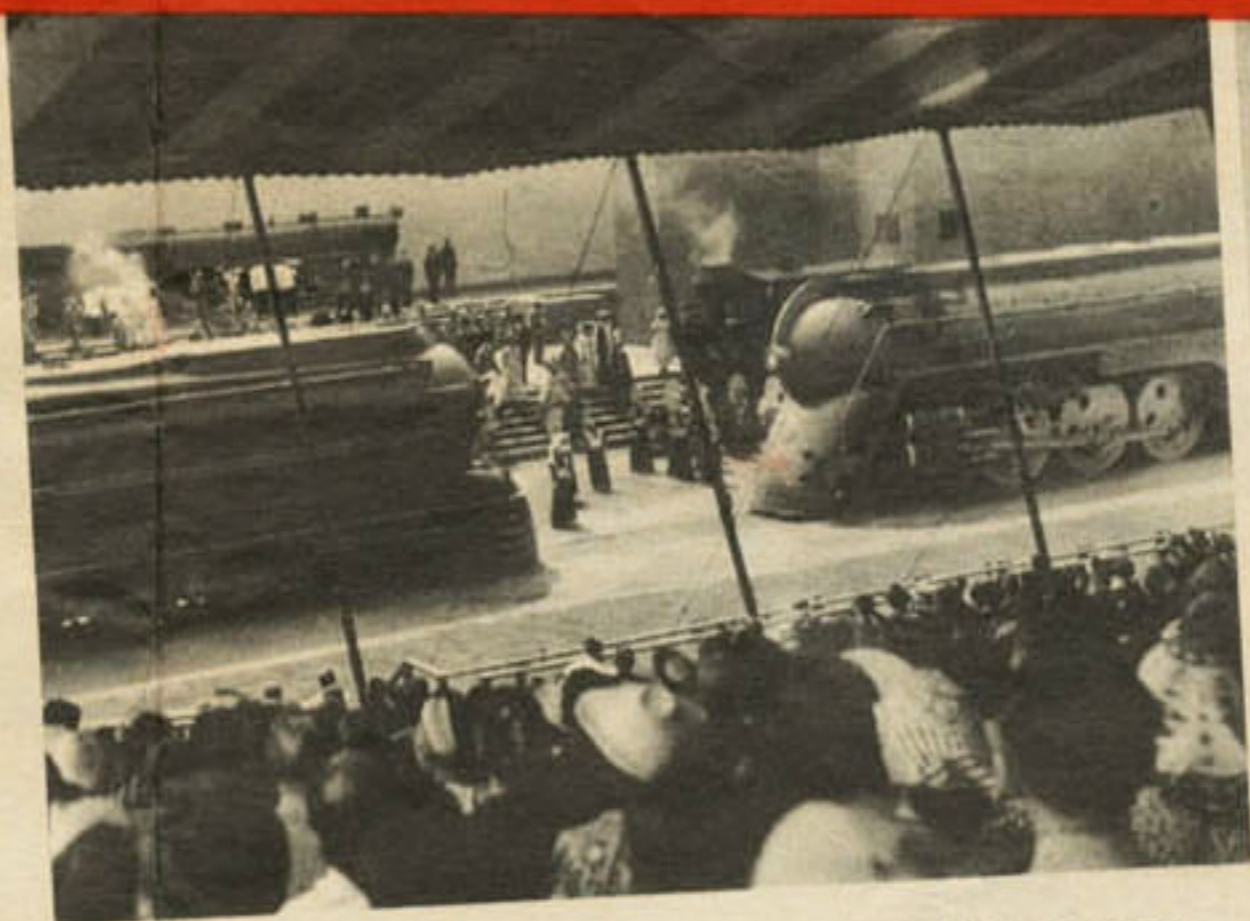
**RAILROADS  
ON PARADE**



# RAILROADS ON PARADE



(Left) As the glamorous spectacle unfolds, the narrators carry you through the progress of the railroads in fifteen dramatic scenes.



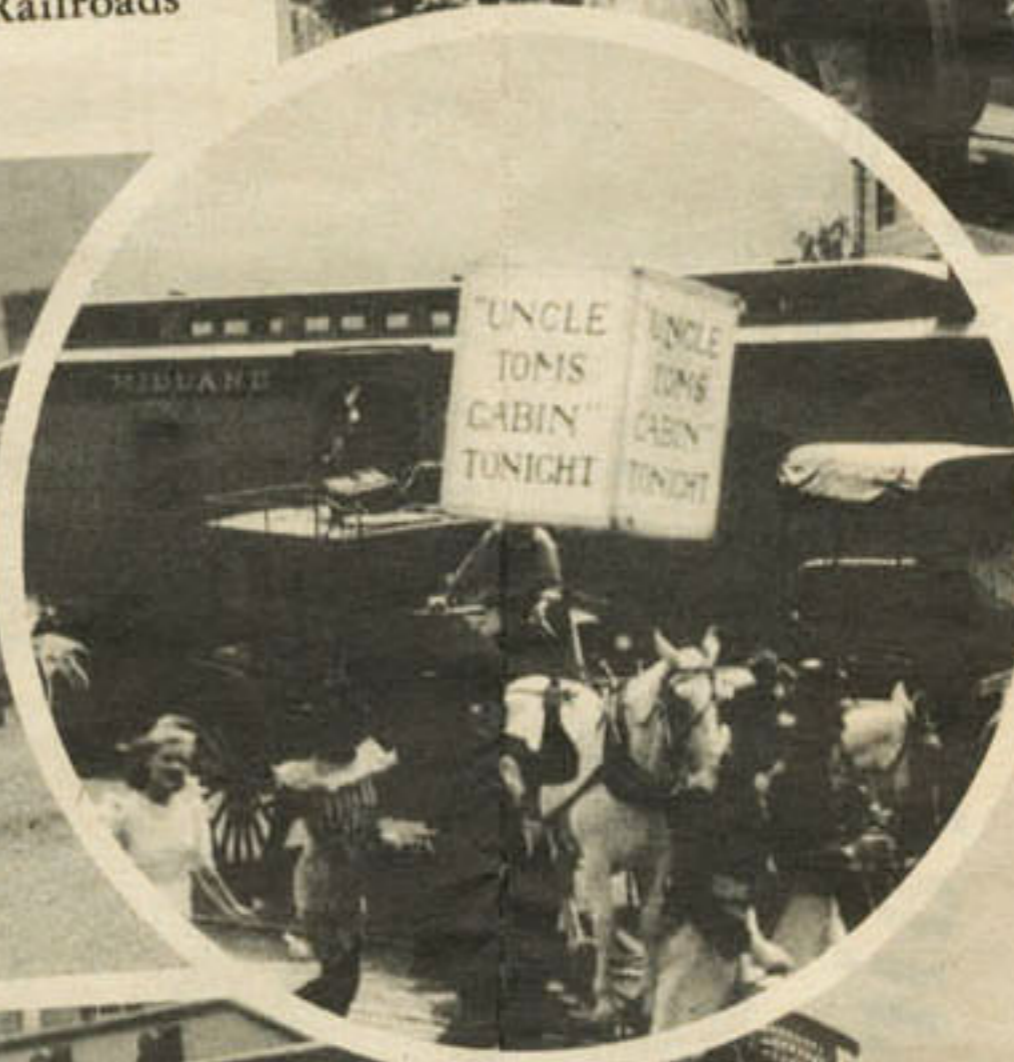
(Above) Three huge modern streamliners meet on the vast stage in a thrilling climax to Railroads on Parade.



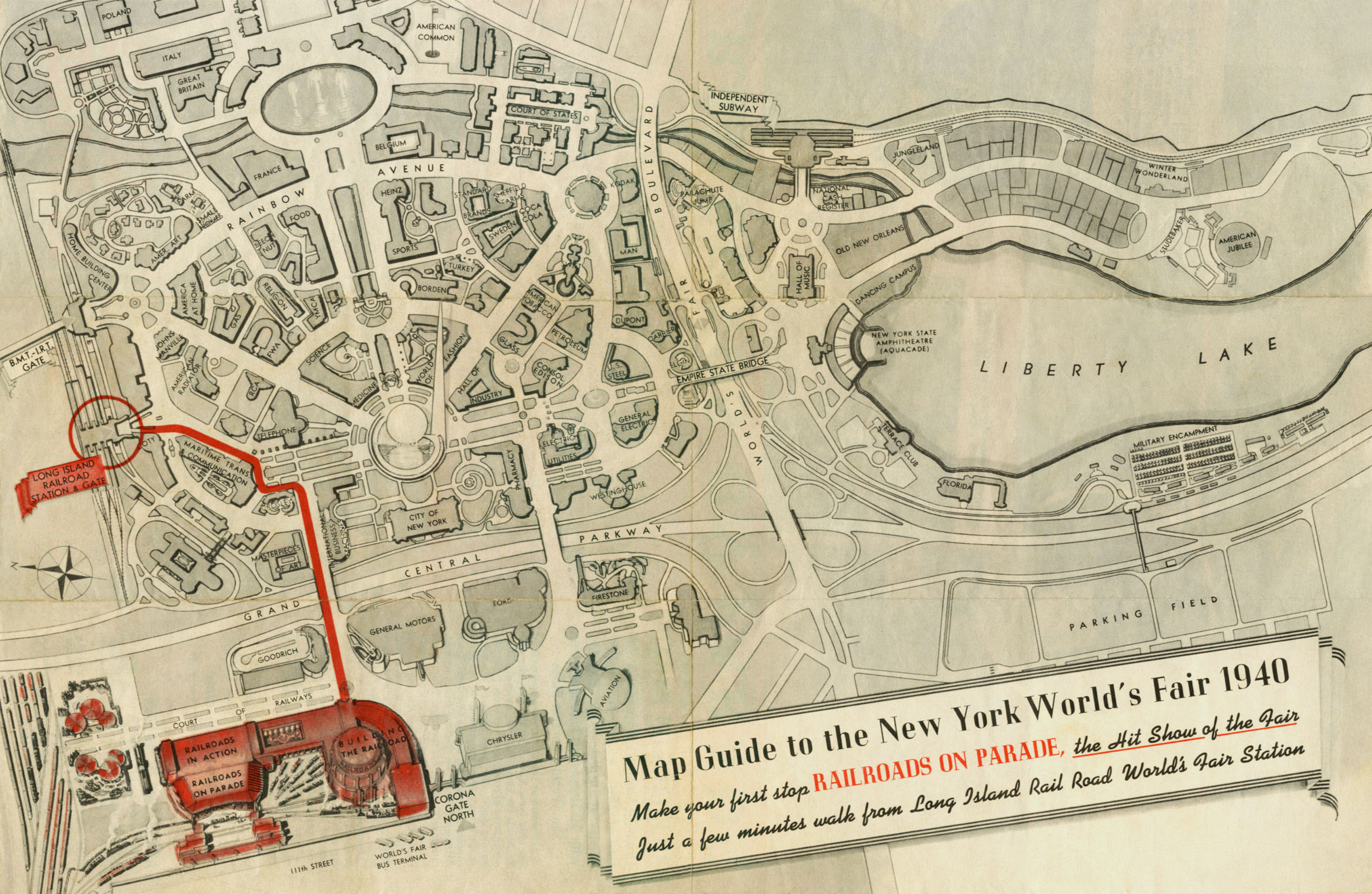
(Above) The "De Witt Clinton," built in 1831, takes the stage. (Left) The morning train arrives at the depot of a small town in the 'seventies. (Below) Lincoln leaves for his inauguration in 1861.



(Right) Completion of the first transcontinental railroad in 1869. (Below) The original engine "Atlantic" and coaches of the Baltimore & Ohio Railroad, built in 1832.







Map Guide to the New York World's Fair 1940  
 Make your first stop **RAILROADS ON PARADE**, the Hit Show of the Fair  
 Just a few minutes walk from Long Island Rail Road World's Fair Station

RAILROADS IN ACTION  
 RAILROADS ON PARADE  
 BUILDING THE RAILROAD

LONG ISLAND RAILROAD STATION & GATE

