

**TRAVEL AND
INFORMATION BUREAUS**

	PHONE
ABERDEEN, SO. DAK. Milwaukee Station, 1 N. Main Street	2325
BELOIT, WIS. Milwaukee Station	257
BUTTE, MONT. 28 West Park Street	3251
CEDAR RAPIDS, IOWA Milwaukee Station, 401 First Ave.	6027
DAVENPORT, IOWA Union Station, Foot Harrison Street	2-5304
DES MOINES, IOWA 501 Locust Street	3-6468
DUBUQUE, IOWA Milwaukee Station	174
GREAT FALLS, MONT. Milwaukee Station, End 1st Ave. North	6170
GREEN BAY, WIS. Milwaukee Station	Adams 866
HOUGHTON, MICH. D.S.S.&A.—M.R. Station	44
JANESVILLE, WIS. Milwaukee Station	191
KANSAS CITY, MO. 202 East 11th Street	Victor 6390
LA CROSSE, WIS. Milwaukee Station	76
MADISON, WIS. Milwaukee Station	Badger 6300
MASON CITY, IOWA 9th St. & So. Penn- sylvania Ave.	324
MILES CITY, MONT. 504 Main Street	149
MILWAUKEE, WIS. E. Wisconsin Ave. at N. Water St.	Daly 1864
MINNEAPOLIS, MINN. 700 Marquette Ave.	Main 3441
MISSOULA, MONT. Higgins Ave. and 3rd Street	4367 and 3422
MITCHELL, SO. DAK. Milwaukee Station	2124
NEW YORK, N. Y. 630 Fifth Ave.	Circle 7-1680
OMAHA, NEB. 1611 Farnam Street	Jackson 4481
OTTUMWA, IOWA Milwaukee Station	633 or 776
PORTLAND, ORE. 532 S. W. Yamhill St.	Beacon 6338
RAPID CITY, SO. DAK. Milwaukee Station	295
ROCKFORD, ILL. 625 So. Main Street	Main 4284
ROCK ISLAND, ILL. Milwaukee Station, 1st Ave. & 17th St.	363
ST. PAUL, MINN. 362 St. Peter Street	Cedar 4491
SEATTLE, WASH. 4th Ave. & Union St.	Eliot 6800
SIoux CITY, IOWA Milwaukee Station, 2nd & Pierce Sts.	8-0511
SIoux FALLS, SO. DAK. Milwaukee Station, 5th & Phillips	217
SPOKANE, WASH. Sprague Ave. & Post Street	Main 2261 and 4121
TACOMA, WASH. 112 South Ninth St.	Main 2101
VANCOUVER, B. C. 793 Granville St.	Seymour 4611
VICTORIA, B. C. 902 Government St.	Garden 7041
WINONA, MINN. Milwaukee Station	4062

F. A. KENNEDY, Travel Promotion Agent
703 Union Station Building

F. N. HICKS H. SENGSTACKEN
Passenger Traffic Manager General Passenger Agent

CHICAGO

The **MILWAUKEE ROAD**

**HIGHLIGHTS OF YOUR WORLD'S
FAIR TRIP**

- ★ Advance arrangements made at home city.
- ★ You start your World's Fair trip carefree.
- ★ You are assisted at New York terminal.
- ★ You are taken by taxi to your hotel.
- ★ Your hotel room is assured.
- ★ You have Souvenir Tickets for the Fair.
- ★ You see New York comprehensively.
- ★ You tour National Broadcasting Studios.
Or you visit Radio City's Observation Roof.
- ★ You are taken by taxi to your train.
- ★ Home again! You have seen New York
and the World's Fair.

**NEW YORK
WORLD'S FAIR**



The **MILWAUKEE ROAD**

ROUND TRIP RAIL FARES TO NEW YORK
FOR INDIVIDUAL TRAVEL

	Standard Routes East of Chicago			Differential Routes East of Chicago			Routes	Col- umn 7	Col- umn 8	Col- umn 9	Col- umn 10	Col- umn 11	Col- umn 12
	Col- umn 1	Col- umn 2	Col- umn 3	Col- umn 4	Col- umn 5	Col- umn 6							
	Aberdeen, S. D.	\$80.65	\$75.75	\$53.50	\$77.05	\$72.50							
Austin, Minn.	65.10	60.20	41.45	61.50	56.95	39.00	(B)	112.85	108.30	103.55	99.00	83.45	80.30
Beloit, Wisc.	53.55	48.65	31.70	49.95	45.40	29.25	(C)	130.05	126.10	119.85	115.30	98.85	90.00
Cedar Rapids, Ia.	59.70	54.80	36.85	56.10	51.55	34.40	(A)	113.65	108.75	104.70	99.80	83.45	79.35
Council Bluffs, Ia.	71.50	66.60	46.85	67.90	63.35	44.40	(B)	110.05	105.50	101.10	96.55	81.00	76.90
Davenport, Ia.	57.70	52.80	35.20	54.10	49.55	32.75	(A)	121.85	116.95	111.95	107.40	90.95	83.40
Des Moines, Ia.	65.60	60.70	41.85	62.00	57.45	39.40	(C)	*135.00	131.60	119.85	115.30	98.85	90.00
Dubuque, Ia.	57.65	52.75	35.10	54.05	49.50	32.65	(C)	*135.00	131.60	119.85	115.30	98.85	90.00
Faribault, Minn.	67.10	62.20	43.15	63.50	58.95	40.70	(C)	*135.00	131.60	119.85	115.30	98.85	90.00
Green Bay, Wisc.	58.35	53.45	35.75	54.75	50.20	33.30	(C)	*135.00	131.60	119.85	115.30	98.85	90.00
Houghton, Mich.	67.90	63.00	43.80	64.30	59.75	41.35	(C)	*135.00	131.60	119.85	115.30	98.85	90.00
Iron Mountain, Mich.	62.50	57.60	39.25	58.90	54.35	36.80	(C)	*135.00	131.60	119.85	115.30	98.85	90.00
Janesville, Wisc.	53.60	48.70	31.70	50.00	45.45	29.25	(C)	*135.00	131.60	119.85	115.30	98.85	90.00
Kansas City, Mo.	69.70	64.00	42.40	65.25	60.00	39.40	(C)	*135.00	131.60	119.85	115.30	98.85	90.00
La Crosse, Wisc.	61.30	56.40	38.25	57.70	53.15	35.80	(C)	*135.00	131.60	119.85	115.30	98.85	90.00
Lewistown, Mont.	111.80	106.90	78.85	108.20	103.65	76.40	(C)	*135.00	131.60	119.85	115.30	98.85	90.00
Madison, Wisc.	55.30	50.40	33.15	51.70	47.15	30.70	(C)	*135.00	131.60	119.85	115.30	98.85	90.00
Mason City, Ia.	65.35	60.45	41.65	61.75	57.20	39.20	(C)	*135.00	131.60	119.85	115.30	98.85	90.00
Miles City, Mont.	99.25	94.35	68.20	95.65	91.10	65.75	(C)	*135.00	131.60	119.85	115.30	98.85	90.00
Milwaukee, Wisc.	53.30	48.40	31.45	49.70	45.15	29.00	(C)	*135.00	131.60	119.85	115.30	98.85	90.00
Minneapolis, Minn.	67.80	62.90	43.70	64.20	59.65	41.25	(C)	*135.00	131.60	119.85	115.30	98.85	90.00
Mitchell, S. D.	76.25	71.35	50.85	72.65	68.10	48.40	(C)	*135.00	131.60	119.85	115.30	98.85	90.00
Montevideo, Minn.	73.80	68.90	48.80	70.20	65.65	46.35	(C)	*135.00	131.60	119.85	115.30	98.85	90.00
Omaha, Nebr.	71.90	67.00	47.15	68.30	63.75	44.70	(C)	*135.00	131.60	119.85	115.30	98.85	90.00
Ottumwa, Ia.	62.05	57.15	38.85	58.45	53.90	36.40	(C)	*135.00	131.60	119.85	115.30	98.85	90.00
Owatonna, Minn.	66.40	61.50	42.55	62.80	58.25	40.10	(C)	*135.00	131.60	119.85	115.30	98.85	90.00
Prairie Du Chien, Wis.	59.70	54.80	36.85	56.10	51.55	34.40	(C)	*135.00	131.60	119.85	115.30	98.85	90.00
Rapid City, S. D.	89.15	84.25	61.75	85.55	81.00	59.30	(C)	*135.00	131.60	119.85	115.30	98.85	90.00
Rockford, Ill.	53.30	48.40	31.50	49.70	45.15	29.05	(C)	*135.00	131.60	119.85	115.30	98.85	90.00
Rock Island, Ill.	57.65	52.75	35.10	54.05	49.50	32.65	(C)	*135.00	131.60	119.85	115.30	98.85	90.00
Sioux City, Ia.	72.40	67.50	47.60	68.80	64.25	45.15	(C)	*135.00	131.60	119.85	115.30	98.85	90.00
Sioux Falls, S. D.	73.40	68.50	48.45	69.80	65.25	46.00	(C)	*135.00	131.60	119.85	115.30	98.85	90.00
Spencer, Ia.	69.15	64.25	44.85	65.55	61.00	42.40	(C)	*135.00	131.60	119.85	115.30	98.85	90.00
St. Paul, Minn.	67.30	62.40	43.30	63.70	59.15	40.85	(C)	*135.00	131.60	119.85	115.30	98.85	90.00
Wausau, Wisc.	61.70	56.80	38.55	58.10	53.55	36.10	(C)	*135.00	131.60	119.85	115.30	98.85	90.00
Winona, Minn.	62.80	57.90	39.50	59.20	54.65	37.05	(C)	*135.00	131.60	119.85	115.30	98.85	90.00
Yankton, S. D.	74.25	69.35	49.15	70.65	66.10	46.70	(C)	*135.00	131.60	119.85	115.30	98.85	90.00

Route A—Standard lines east of Chicago.
Route B—Differential lines east of Chicago.
Route C—Applies for either standard or differential lines east of Chicago.
Column 7: Good in all sleeping and parlor cars on payment for space occupied.
Column 8: Good in all sleeping and parlor cars west of Chicago and in upper berth east of Chicago on payment for space occupied.
Column 9: Good in tourist sleeping cars west of Chicago and in sleeping and parlor cars east of Chicago on payment for space occupied.
Column 10: Good in tourist sleeping cars west of Chicago and in standard upper berth east of Chicago on payment for space occupied.
Column 11: Good in tourist sleeping cars west of Chicago on payment for space occupied and in coaches only east of Chicago.
Column 12: Good in coaches only.
From the above stations and all other stations, Butte and west thereof, the following dates of sale and return limits will apply:
Dates of Sale: April 28th to October 28th, 1939.
Stop-overs permitted in either direction within return limit of ticket.
Return Limits: Three months, except two months for fares marked (*) and (f). From these stations three month limit tickets will be sold for \$136.15 from (*) stations and \$90.35 from (f) stations.

**Low Cost All-Expense
Escorted Tours**

Tours with all expenses prepaid will be available during June, July, August and September—the very best travel months. You have complete freedom from travel worries, no bother with baggage, no tickets to buy, no rail or hotel reservations to make. A whole week or more filled with thrills, romance and adventure including visits to Niagara Falls and Washington, the Nation's capital. Ask your Milwaukee Road agent for particulars.

Organized Groups—Private Parties

Special arrangements and concessions for groups of 25 or more traveling together can be made. Complete information upon request.

Columns 1 and 4: Good in all sleeping and parlor cars on payment for space occupied.
Columns 2 and 5: Good in all sleeping and parlor cars west of Chicago and in upper berth east of Chicago, on payment for space occupied.
Columns 3 and 6: Good in coaches only.
From the above stations and all other stations east of Butte, Montana, the following dates of sale and return limits will apply:
Dates of Sale: For fares shown in Columns 1, 2, 4 and 5, June 1st to September 30th, 1939.
For fares shown in Columns 3 and 6, April 28th to October 28th, 1939.
Stop Overs permitted in either direction within return limit of ticket.
Return Limits: Three months on tickets reading from Kansas City, Council Bluffs, Omaha, Sioux City, St. Paul, Minneapolis and points west thereof.
Thirty days on tickets reading from points east of those named in preceding paragraph.

General Information

World's Fair Opens April 30, Closes October 31

Individual Service: These services are for individuals and are therefore unescorted. You are free to enjoy the World's Fair, the sights of New York, and the features of these arrangements at your own convenience.

Special Rates for Children: No charge will be made for children under 5 years of age sharing bed in hotel with adult. Children under 5 years of age will be admitted free to the Exposition, and no charge will be made for transfers specified in the itineraries, nor for sightseeing unless child occupies a separate seat in the sightseeing coach.

For children 5 to 12 years of age sharing hotel room with adults, the rate will be as follows:

Example 1: One adult accompanied by one child 5 to 12 years of age will be charged Single Room rate—child charged one-half Single Room rate plus 50c.

Example 2: Two adults accompanied by child 5 to 12 years of age will be charged Double Room rate each—child charged one-half Double Room rate plus 50c.

Meals are not included in these arrangements.

Sightseeing: The Grand Sightseeing Tour of New York will be made by comfortable Gray Line Motor Coach.

National Broadcasting Company Studio Tour may be made, or Rockefeller Center Observation Roof visited at Radio City, 30 Rockefeller Plaza.

Hudson River Day Line New York Harbor Cruise or Trip to West Point (included in 6-Day and 7-Day Visits only) depart from foot of West 42nd Street daily.

Transfers: Transfers between stations and hotels in New York will be performed by the following taxicab systems: ALLIED • PARMALEE • TERMINAL • TOWN CAB

Extension of Visit: If you desire to stay at your hotel for a period longer than that specified in your arrangements, you must notify the hotel management.

American Express Travel Service: These arrangements in New York will be under the auspices of the American Express, a world-wide organization internationally known for its travel service and travelers cheques.

During the World's Fair, the American Express Company will maintain a Special World's Fair Office at 444 Madison Avenue (49th Street and Madison Avenue, Phone Plaza 3-8100), also service and information bureaus at all New York railroad terminals, and an exhibit office in the Maritime Building located in the Transportation Zone on the World's Fair grounds.

Act Now

and ask your Milwaukee Road ticket agent to reserve your hotel accommodation in New York. Tickets including New York Tour cannot be sold until hotel reservation has been confirmed.

Do not delay.

Secure your hotel accommodation in New York in advance by purchasing tickets for one of the following 2 to 7 day programs in New York, at the same time that you buy your round trip rail ticket. Any Milwaukee Road agent will sell you the ticket for the selected program and reserve in advance the hotel accommodation included therein. Tours of longer duration are also available.

2-DAY TOUR

In New York Includes:

- Taxicab transfer from railroad terminal in New York to hotel.
- One night in hotel (room only—no meals).
- One Souvenir Admission Ticket to the World's Fair.
- Grand Sightseeing Tour of New York by Gray Line Motor Coach.
- Choice of tour of National Broadcasting Studios at Radio City or admission to Rockefeller Center Observation Roof.
- Taxicab transfer from hotel to railroad terminal in New York.

Prices quoted below are per person, varying with hotel accommodations selected, and include all services specified above.

HOTELS	Single Room with Bath	Double Room with Bath
Group 1	\$13.55	\$11.55
Group 2	11.05	10.30
Group 3	10.05	9.80
Group 4	9.55	9.30

3-DAY TOUR

In New York Includes:

- Taxicab transfer from railroad terminal in New York to hotel.
- Two nights in hotel (room only—no meals).
- Two Souvenir Admission Tickets to the World's Fair.
- Grand Sightseeing Tour of New York by Gray Line Motor Coach.
- Choice of tour of National Broadcasting Studios at Radio City or admission to Rockefeller Center Observation Roof.
- Taxicab transfer from hotel to railroad terminal in New York.

Prices quoted below are per person, varying with hotel accommodations selected, and include all services specified above.

HOTELS	Single Room with Bath	Double Room with Bath
Group 1	\$22.30	\$18.30
Group 2	17.30	15.80
Group 3	15.30	14.80
Group 4	14.30	13.80

4-DAY TOUR

In New York Includes:

- Taxicab transfer from railroad terminal in New York to hotel.
- Three nights in hotel (room only—no meals).
- Two Souvenir Admission Tickets to the World's Fair.
- Grand Sightseeing Tour of New York by Gray Line Motor Coach.
- Choice of tour of National Broadcasting Studios at Radio City or admission to Rockefeller Center Observation Roof.
- Taxicab transfer from hotel to railroad terminal in New York.

Prices quoted below are per person, varying with hotel accommodations selected, and include all services specified above.

HOTELS	Single Room with Bath	Double Room with Bath
Group 1	\$29.30	\$23.30
Group 2	21.80	19.55
Group 3	18.80	18.05
Group 4	17.30	16.55

5-DAY TOUR

In New York Includes:

- Taxicab transfer from railroad terminal in New York to hotel.
- Four nights in hotel (room only—no meals).
- Three Souvenir Admission Tickets to the World's Fair.
- Grand Sightseeing Tour of New York by Gray Line Motor Coach.
- Choice of tour of National Broadcasting Studios at Radio City or admission to Rockefeller Center Observation Roof.
- Taxicab transfer from hotel to railroad terminal in New York.

Prices quoted below are per person, varying with hotel accommodations selected, and include all services specified above.

HOTELS	Single Room with Bath	Double Room with Bath
Group 1	\$37.55	\$29.55
Group 2	27.55	24.55
Group 3	23.55	22.55
Group 4	21.55	20.55

6-DAY TOUR

In New York Includes:

- Taxicab transfer from railroad terminal in New York to hotel.
- Five nights in hotel (room only—no meals).
- Three Souvenir Admission Tickets to the World's Fair.
- Grand Sightseeing Tour of New York by Gray Line Motor Coach.
- Choice of tour of National Broadcasting Studios at Radio City or admission to Rockefeller Center Observation Roof.
- Choice of Hudson River Day Line New York Harbor Cruise or Trip to West Point or Newburgh, by steamer.
- Taxicab transfer from hotel to railroad terminal in New York.

Prices quoted below are per person, varying with hotel accommodations selected, and include all services specified above.

HOTELS	Single Room with Bath	Double Room with Bath
Group 1	\$45.35	\$35.35
Group 2	32.85	29.10
Group 3	27.85	26.60
Group 4	25.35	24.10

7-DAY TOUR

In New York Includes:

- Taxicab transfer from railroad terminal in New York to hotel.
- Six nights in hotel (room only—no meals).
- Three Souvenir Admission Tickets to the World's Fair.
- Grand Sightseeing Tour of New York by Gray Line Motor Coach.
- Choice of tour of National Broadcasting Studios at Radio City or admission to Rockefeller Center Observation Roof.
- Choice of Hudson River Day Line New York Harbor Cruise or Trip to West Point or Newburgh, by steamer.
- Taxicab transfer from hotel to railroad terminal in New York.

Prices quoted below are per person, varying with hotel accommodations selected, and include all services specified above.

HOTELS	Single Room with Bath	Double Room with Bath
Group 1	\$52.35	\$40.35
Group 2	37.35	32.85
Group 3	31.35	29.85
Group 4	28.35	26.85

HOTELS

A wide choice of hotels is available for purchasers of these programs. For example, if a 5-day tour is selected, including a group 3 hotel, any hotel shown in group 3 below may be selected.

GROUP I

- | | | |
|--|---|--|
| AMBASSADOR
BARBIZON PLAZA
BARCLAY
BERKSHIRE
BEVERLY
BELTMORE
CLYDE
CROYDON
GLADSTONE | GOTHAM
LOWELL
MAYFAIR HOUSE
NEW WESTON
NEW YORKER
PARK LANE
PENNSYLVANIA
PIERRE
PLAZA | RITZ CARLTON
RITZ TOWERS
ROOSEVELT
SAVOY PLAZA
VANDERBILT
WESTBURY
WEYLIN
WYNDHAM |
|--|---|--|

GROUP II

- | |
|---|
| ADAMS
ALGONQUIN
ALRAE
ASTOR
BARBIZON PLAZA
BELMONT PLAZA
BEVERLY
BLACKSTONE
BRITTANY
BROADMOOR
COMMODORE
DAUPH |
|---|

VISIT THE GREAT NEW YORK WORLD'S FAIR AND SEE . . . the "World of Tomorrow"

. . . see, in fact, how art and science and \$150,000,000 have combined to produce the thrilling spectacle of a lifetime.

See New York City, too, America's largest metropolis. See its famous skyline and its great harbor where ride the world's largest ships! See its celebrated Radio City and its renowned "Great White Way"!

Yes, see all these mighty attractions and many more, and by all means see them economically, comfortably, WITH YOUR HOTEL ACCOMMODATIONS ASSURED—reserved for you IN ADVANCE.

The Plan is simple! In connection with your railroad ticket, whether you travel by Pullman or in modern coaches, you can purchase from your local MILWAUKEE ROAD Ticket Agent, a ticket which will include your transportation to New York City and return and a program of from two to seven days in New York, longer if desired which will include your hotel accommodations, sightseeing and visits to the World's Fair as described in detail herein.

Travel to the Fair in the tempo of tomorrow on fast air-conditioned trains via **THE MILWAUKEE ROAD**

Every great exposition since before the turn of the century has inevitably turned the spotlight on the wonderful progress of rail transportation. And on each occasion from the Chicago "World's Fair of '93 to the New York Fair of '39," The MILWAUKEE ROAD has delighted thousands of visitors with rail travel that is the perfect introduction to a world of tomorrow.

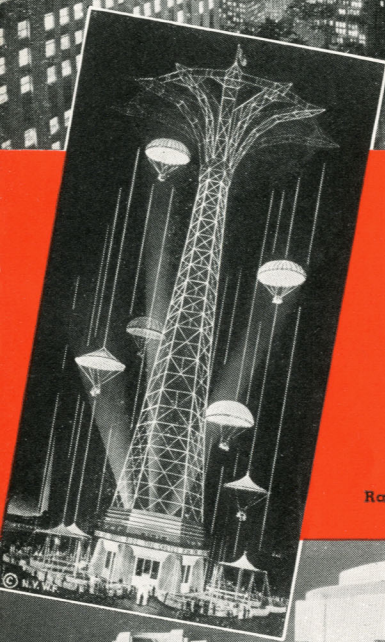
FOR COMFORT, CONVENIENCE, ECONOMY

Rich man, poor man . . . you can enjoy comforts on The MILWAUKEE ROAD that a millionaire couldn't buy a decade or so ago. You can select accommodations to suit your budget in luxurious sleeping or parlor cars, modern type tourist sleepers or coaches. You enjoy the cleanliness and comfort of air-conditioning; courteous, friendly service; appetizing meals at very moderate prices. East of Chicago you are given a choice of the greatest variety of routes—all rail or part rail, part water.

World's Fair—Manhattan Island in Distance



Upper New York by Night—Empire State Building at Right

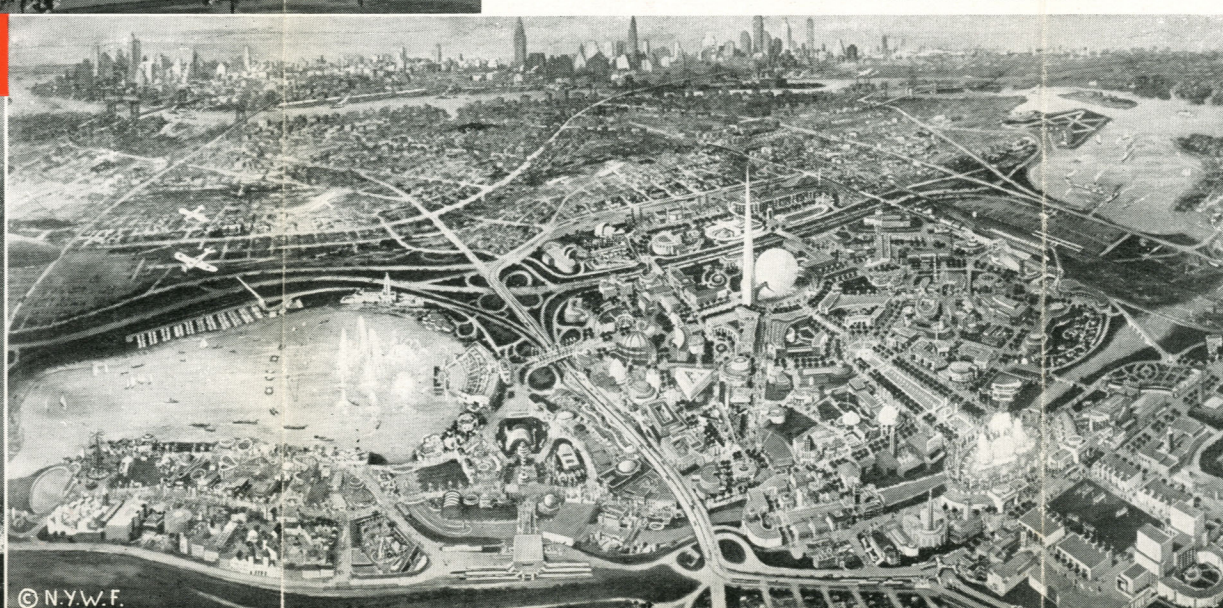


"Happy Landings" by Parachutes

Railroad Exhibit Building



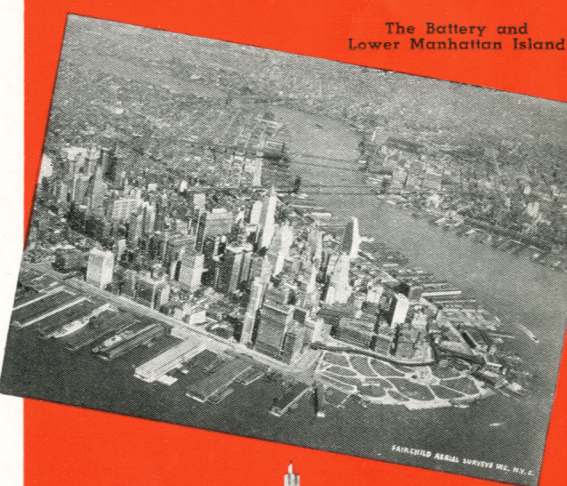
Hall of Communication—Showing Exterior Murals



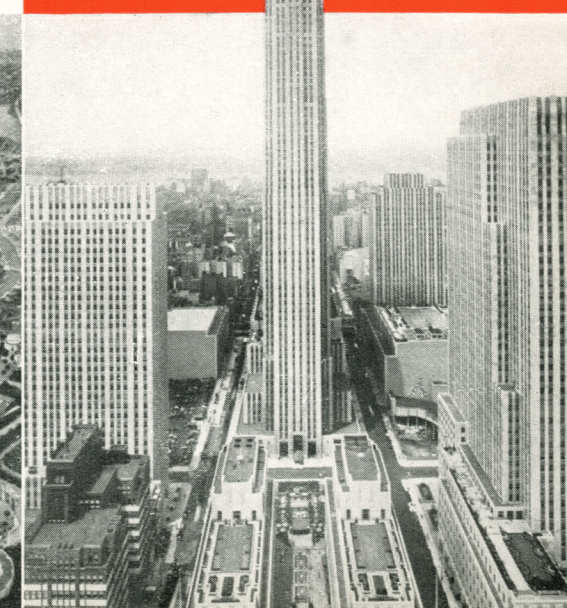
© N.Y.W.F.



Times Square—Gay White Way



The Battery and Lower Manhattan Island



Rockefeller Center