

# 4 NIGHTS and 4 DAYS in GLAMOROUS NEW YORK 1 NIGHT and 1 DAY in HISTORIC WASHINGTON SEVERAL HOURS SIGHTSEEING AT NIAGARA FALLS

## WHAT EACH TOUR INCLUDES

1. Round trip railroad coach ticket.
2. Reserved coach space to Chicago.
3. Assigned coach seats Chicago to New York and Washington to Chicago in all-steel, high-grade coaches—seats adjustable for sleeping purposes. We suggest patrons bring a bed sheet for night covering. Pillows will be available at a nominal charge.
4. Air-conditioned coaches and dining car on the entire trip.
5. Meals on trains and at Washington as indicated in the detailed itinerary. Varied menu with wide choice of viands in dining cars and at Washington.



A sight-seeing steamer will take you on a voyage around Manhattan.

6. Lodging in New York and Washington at splendid hostleries, basis two persons to a room with bath. Single room and bath \$5.00 additional. No extra charge for three and four persons in one room with bath. HIAWATHA TOURS use the Taft and Tudor Hotels in New York. If desired, accommodations at the Pennsylvania Hotel will be provided at \$4.00 extra per person. In Washington accommodations will be provided at the well known and centrally located Hotel Raleigh.
7. Complete sightseeing program at Niagara Falls, New York and Washington as outlined in itinerary.
8. All admissions and fees on sightseeing trips described in itinerary.
9. Two admission tickets to New York World's Fair.
10. Transfer of passengers and hand luggage between rail stations and from rail stations to hotels and vice versa.
11. Services of an experienced tour escort and railroad representatives on the entire trip.

Laundry, telephone calls, beverages and other items of a personal nature such as tips and gratuities to waiters and hotel servants, are not included. For your convenience meals are not included in New York, thus permitting you to dine when and where you wish.

## CONDITIONS

In selling these tours, the selling agent acts only as agent for the railroads, transportation companies, hotels, etc., involved in the operation of the tours and assumes no responsibility for injury to persons or loss of or damage to personal effects and baggage. We retain the privilege to change any part of the itinerary without notice for the protection of our clients in case of an emergency.

We reserve the right to decline to accept or retain any person or persons on these tours at any and all times and in such cases, equitable adjustment of any money involved will be made with those concerned.

## STOPOVERS

Passengers may stop over in New York or at points on return trip upon application to and permission from the tour escort. Proportionate value of unused tour features will, in such cases, be refunded.

## AMERICAN EXPRESS TRAVEL SERVICE

The arrangements in New York for the handling of these tours will be under the auspices of the American Express Company, a world-wide organization known for its travel service. During the World's Fair, the American Express Company will maintain a special World's Fair office at 444 Madison Avenue (49th Street and Madison Avenue, Phone Plaza 3-8100), also service and information bureau at all New York railroad terminals, and an exhibit office in the Maritime Building located in the Transportation Zone on the World's Fair grounds.

## MAKE RESERVATIONS EARLY

Each tour will be limited as to numbers, therefore, reservations should be made as early as possible. A deposit of \$5.00 will be required to hold each reservation and final payment must be made four days before departure date of the tour selected.

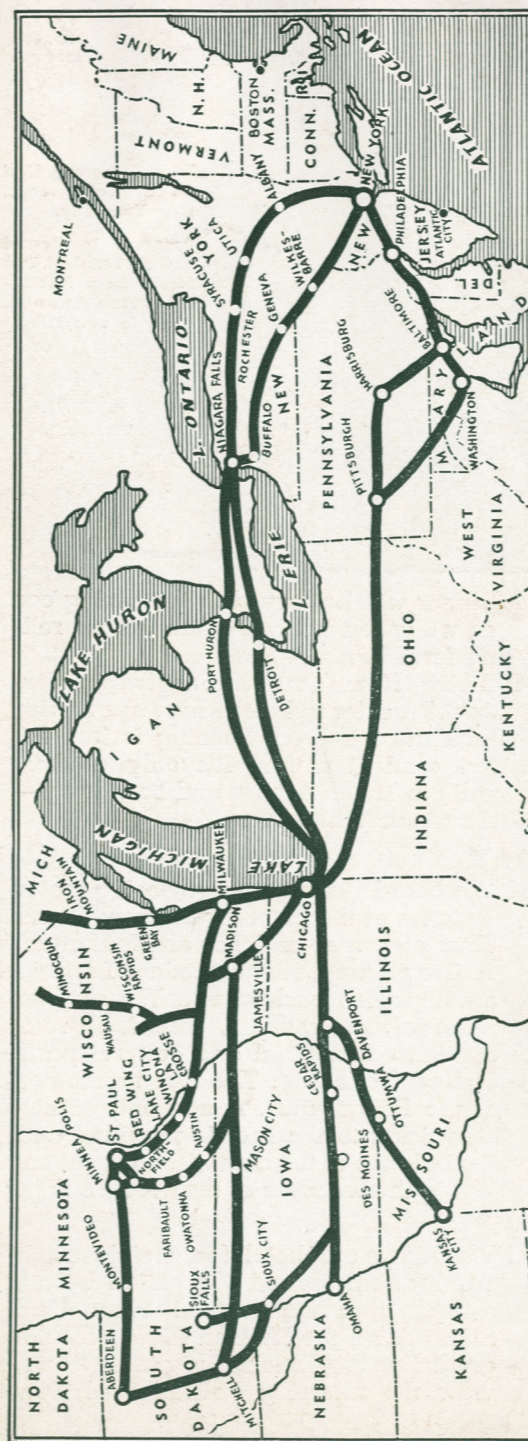
Consult your local MILWAUKEE ROAD agent or write any representative listed below, and give full name of all members of your party and how you wish to be roomed—single, double, three in room, etc. Be sure to specify your preference of hotel and date of tour departure and remit \$5.00 by check or money order for each person in party.

## TRAVEL AND INFORMATION BUREAUS

<b>ST. PAUL, MINN.</b> 362 St. Peter Street Phone Cedar 4491 D. G. McMillan, General Agent	<b>MINNEAPOLIS, MINN.</b> 700 Marquette Avenue Phone Main 3341 H. M. Larson, General Agent
J. J. Osle, Assistant General Passenger Agent 362 St. Peter Street, St. Paul, Minn.	
<b>LA CROSSE, WISC.</b> Phone 76 H. J. Troger, Passenger Agent	<b>MADISON, WISC.</b> Phone Badger 6300 C. F. Dahnke, City Passenger Agent
<b>MILWAUKEE, WISC.</b> E. Wisconsin Ave. at N. Water St. Phones Daly 1864 & Marquette 6120 J. C. Prien, General Agent	<b>MASON CITY, IOWA</b> 9th and S. Pennsylvania Ave. Phone 324 W. F. Cody, Div. Passenger Agent

F. A. Kennedy, Travel Promotion Agent  
703 Union Station Building  
Chicago, Illinois

World's Fair photographs by courtesy of New York Worlds Fair 1939, Inc.



Speedy, luxurious service across the country . . . passing through the most attractive scenery in DAYLIGHT.

# NEW YORK WORLD'S FAIR

GO BY TRAIN

1939

HERE'S YOUR LOW COST HIAWATHA TOURS

**\$64.90** from MILWAUKEE

**\$74.90** from TWIN CITIES

ALL-EXPENSE ESCORTED

## THE MILWAUKEE ROAD

The MILWAUKEE ROAD



## Day By Day Itinerary

### SATURDAY

- 12:30 PM Leave Minneapolis on the HIAWATHA.
- 1:00 PM Leave St. Paul.  
Departure from other points will be as shown in condensed schedule.
- 5:30 PM Dinner will be served in the beautiful dining car by quiet, efficient waiters eager to make this occasion a delectable prelude to the pleasures of the trip yet to follow.
- 6:10 PM Arrive Milwaukee. After a stop of five minutes here, we speed onward toward Chicago, now only seventy-five minutes away.
- 7:30 PM Arrive Chicago Union Station and transfer immediately to the Michigan Central where special cars await us.



Niagara Falls. You'll see this world-famous sight, Cave of the Winds, Whirlpool Rapids and other marvels on Sunday.

### Only One Night Enroute

- 8:00 PM Leave Chicago on the Michigan Central Route. Shortly after leaving Chicago the seats in our special coaches will be rearranged into beds for the night.
- ### SUNDAY
- Breakfast will be served in the dining car ere we reach Niagara Falls.
  - 7:30 AM Arrive Niagara Falls. Our luggage will be left under guard in our coaches while we board waiting motor coaches to see all of Niagara Falls—Goat

- Island, Prospect Park, Luna Island, Cave of the Winds, Three Sister Islands, Prospect Point, then across the gorge to the Canadian side to Queen Victoria Park and Table Rock, Horseshoe Falls, along the very brink of the gorge to Whirlpool Rapids from whence we return to our train. Those in our party who desire to attend church services will have ample time to do so.
- 12:01 PM Leave Niagara Falls via the New York Central Lines. Luncheon is served in the dining car as our train rolls swiftly eastward across New York state. The Erie Canal is visible frequently and in mid-afternoon distant mountains which rise majestically in verdant robes and rocky crowns will be observed.
- 6:00 PM Dinner is served in the dining car as we move smoothly through the Mohawk Valley. History, romance, colonial antiquity permeates every mile of this beautiful valley. At 7:00 PM we arrive at Albany, capitol of New York and soon we are gliding rapidly along the eastern bank of the historic Hudson.
- 10:00 PM Arrive Grand Central Station in New York City and transfer to hotel where rooms with bath have been reserved. There is still time for the venturesome to see New York's nightly activity.



Hotel Taft, 7th Ave. at 50th Street, New York City.  
In Times Square and theatrical district.

Assured accommodations at finest hotels in most favorable locations.

### MONDAY

9:15 AM Gray Line sightseeing buses call for us at the hotel to take us on a grand tour of Upper and Lower Manhattan—Grant's Tomb, Hudson River Drive, famous homes on Fifth Avenue, Empire State Building, the Battery, Aquarium, Bowery, "East Side West Side All Around the Town" and terminating at the Fairgrounds. Souvenir admission ticket is provided. The balance of the day will be spent at the World's Fair.

### TUESDAY

9:00 AM Leave the hotel for a boat trip around Manhattan, sailing from foot of West 42nd Street down the Hudson River past the mighty docks of the world's largest ocean liners, past Hoboken, Jersey City, Staten Island, Statue of Liberty, Governor's Island, Battery Park, under the Brooklyn, Manhattan and fourteen other famous bridges over the East, Harlem and Hudson Rivers, seeing New York's famous skyline from all sides. Admission ticket to the World's Fair is provided.

### WEDNESDAY

9:30 AM Sightseeing trip through Rockefeller Center ending on the 70th Floor of the RCA Building. The balance of the day is free for independent action.



Hotel Pennsylvania, 8th Ave. at 34th Street, New York City. Adjacent to Pennsylvania R.R. Station and New York's largest department stores.

### THURSDAY

This is our last day in New York City and it is free for independent action. Some of us will want to go shopping, others may wish to take some special trip, and the tour escort will be glad to complete arrangements accordingly.

- 5:53 PM Leave New York via the Baltimore & Ohio Railroad. Dinner will be served in the dining car enroute to Washington.
- 11:16 PM Arrive Washington, D. C., and transfer to the Hotel Raleigh where rooms with bath have been reserved.

### FRIDAY

Breakfast in the hotel dining room.

9:00 AM Motor coaches will call at hotel entrance to take our party to the Bureau of Engraving where we will see our stamps and paper money printed, then to Old and New Museums, thence to the Capitol where special guides will lecture and conduct us through this great building. We continue on to the Supreme Court Building, Congressional Library and the White House.

- 12:15 PM Lunch will be provided at the famous "Ye Little Hatchet Tavern" at the entrance to Mt. Vernon estate. After lunch the party will visit George Washington's old home, then proceed to Alexandria, Arlington Cemetery, Lee's old home, Fort Meyer, and return to Washington via Rock Creek Park and past foreign embassies and famous homes.
- 4:15 PM Leave Washington via the Baltimore & Ohio Railroad. Enroute we pass through Harper's Ferry and cross the Potomac River and soon are climbing high into the Appalachian Mountains. Dinner will be served in the dining car.

### SATURDAY

Breakfast in the dining car.

8:05 AM Arrive Chicago via the Baltimore & Ohio Railroad and transfer to the Union Station. Here we bid many friendly farewells as our party divides to take various trains for home. See condensed schedule outlined herein.

## Day By Day Itinerary

### SATURDAY

- 12:30 PM We leave The MILWAUKEE ROAD Station at Minneapolis aboard the modern speedliner HIAWATHA.
- 1:00 PM Our train leaves the St. Paul Union Station. See condensed schedule herein for departure time from other points. Our schedule to Chicago will be the same as outlined above for "MC" Tours
- 7:30 PM Arrive Chicago Union Station and transfer promptly to Grand Trunk Railway Station at Dearborn and Polk Streets where special coaches will await us.

### Only One Night Enroute

- 8:00 PM Leave Chicago via the Grand Trunk-Canadian National. Our coach seats will be arranged into beds for the night.
- ### SUNDAY
- Breakfast served in the dining car prior to our arrival at Hamilton, Ontario.
  - 7:43 AM Arrive Hamilton, Ontario. We will leave our hand luggage in the cars under guard and board sightseeing buses for the 46 mile trip along the shores of Lake Ontario to Niagara Falls, visiting the Canadian side first. Our route takes us to Queen Victoria Park and Table Rock, Horseshoe Falls, along the brink of the Falls to Whirlpool Rapids, thence to the American side to Goat Island, Prospect Park, Luna Island, Cave of the Winds, Three Sister Islands, Prospect Point, etc., terminating at the Lehigh Valley Railroad Station.
  - 10:09 AM Leave Niagara Falls via the Lehigh Valley Railroad. Lunch is served in the dining car as we traverse the lovely Finger Lakes region. Our route offers scenic attractions galore—the winding Lehigh River in Pennsylvania; Mauch Chunk in the "Switzerland of America"; the Blue Mountain Range with the Nescopeck and Wyoming Valleys spread out far below, and a hundred miles along the broad Susquehanna River.



Tudor City group, 42nd St. at 3rd Avenue, New York City.  
Adjacent to Grand Central Terminal. Two blocks from fashionable Fifth Avenue. Close to everything.

- 6:00 PM Dinner will be served in the dining car as we speed smoothly through the rolling farm lands of New Jersey.
- 8:50 PM Arrive New York (Pennsylvania Station). Transfer to hotel where rooms with bath are reserved. Evening is free for independent action. It's only a short walk to Times Square and Broadway—the Great White Way.

### MONDAY

9:15 AM We board Gray Line sightseeing motor coaches at the hotel for the new Grand Tour of Upper and Lower Manhattan. A Gray Line College Student Lecturer accompanies each coach. We see the financial, commercial, historical, residential, educational and cultural parts of New York City. The tour terminates at the Fairgrounds. A souvenir admission ticket to the Fair is provided and the balance of the day will be spent enjoying the wonders of the World's Fair.

### TUESDAY

9:00 AM We leave our hotel for a sightseeing trip by boat around Manhattan Island, sailing from the foot of West 42nd Street down the Hudson River past the great berths of luxurious ocean liners, view the towering Palisades of New

Jersey, past Staten Island, Statue of Liberty, Governor's Island, Battery Park, under the Brooklyn, Manhattan and fourteen other famous bridges. We see New York's famous Billion Dollar skyline from all sides. Admission ticket to the World's Fair, which will be visited after the cruise, is provided.

### WEDNESDAY

9:30 AM We leave on another sightseeing trip, this time through Rockefeller Center and terminating on the 70th Floor of the RCA Building. The balance of the day is open to do as you please.

### THURSDAY

This, our last day in New York City, will be a day free for independent action. Some may want to shop, others may wish to take some special trip or excursion and the tour escort will be glad to offer suggestions and complete any arrangements required.

- 5:30 PM Leave New York via the Pennsylvania Railroad. Dinner will be served in the dining car enroute to Washington, D. C.
- 9:20 PM Arrive Washington, D. C. Transfer to Hotel Raleigh where rooms with bath have been reserved in advance.

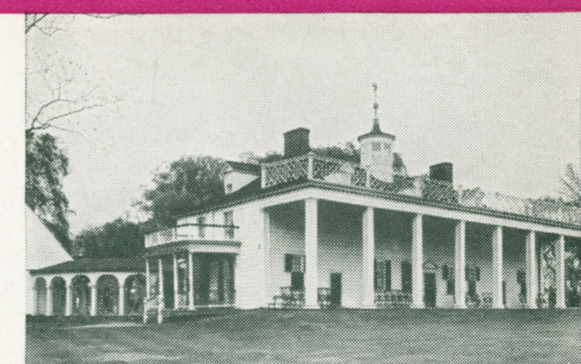
### FRIDAY

Breakfast in the hotel dining room.



Hotel Raleigh, Pennsylvania Avenue at 12th Street, Washington, D. C.  
Through its corridors have strode presidents, congressmen, foreign ambassadors and other celebrities.

Mt. Vernon, home of George Washington is one stop on this tour you will always remember.

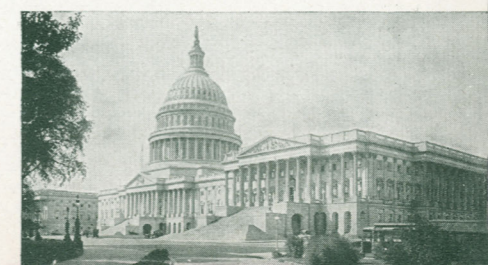


- 9:00 AM Sightseeing buses will be waiting to take our party to the Bureau of Engraving where we will see how our postage stamps and paper money are printed, then to Old and New Museums, thence to the Capitol where special guides will take us on a lecture tour through this great building, after which we will visit the Supreme Court Building, Congressional Library, and the White House.
- 12:15 PM Lunch will be provided at the famous "Ye Little Hatchet Tavern" at the entrance to Mt. Vernon estate. After lunch the party will visit George Washington's old home, then proceed to Alexandria, Arlington Cemetery, Lee's old home, Fort Meyer, and return to Washington via Rock Creek Park and past foreign embassies and famous homes.
- 5:10 PM Leave Washington via the Pennsylvania Railroad. Our route embodies the famed Horseshoe Curve, takes us through Harrisburg, the capitol of Pennsylvania, and traverses the Appalachian and Allegheny Mountain Ranges. Dinner is served in the dining car.

### SATURDAY

Breakfast served in the dining car.

8:35 AM Arrive Chicago Union Station. After friendly farewells our party disbands to take various trains for home as indicated in condensed schedule herein.



The Capitol at Washington through which you will be conducted by competent guides.



# 8 Glorious, Romantic, Thrill-Packed Days!

## Happy, Care-free Vacations at Low Cost

Pleasure, thrilling experiences, healthful recreation, broader interests, colorful pictures in the mind, new ideas, new friends, new subjects of conversation . . . all this and more is offered by these well planned low-cost all-expense, escorted "Hiawatha Tours" to the New York World's Fair 1939.

Companionship? The very best. You travel with a congenial group of people of culture and refinement who share your tastes and interests. You gain complete freedom from travel worries as a member of these tours. You miss nothing; you waste no time wandering about aimlessly in search of the things you are most anxious to see. No rail or hotel problems, no thumbing through guide-books to plan your sightseeing, no bother with baggage—it disappears magically when you set it out and is waiting for you when and where it should be.

The program for these "Hiawatha Tours" has been arranged by travel specialists who have been over the ground thoroughly many times and are entirely familiar with all surroundings and with the needs and wishes of travelers. An experienced travel counselor will escort each one of these tours to and from New York, thereby assuring you of the last word in friendly and helpful service.

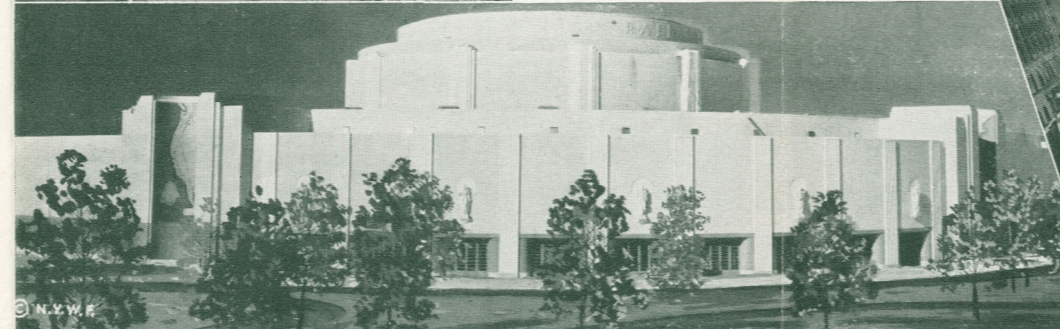
Study these tours carefully and see how much is included at a moderate cost.

*The* **MILWAUKEE ROAD**



Above: New York skyline as seen on your voyage around Lower Manhattan.

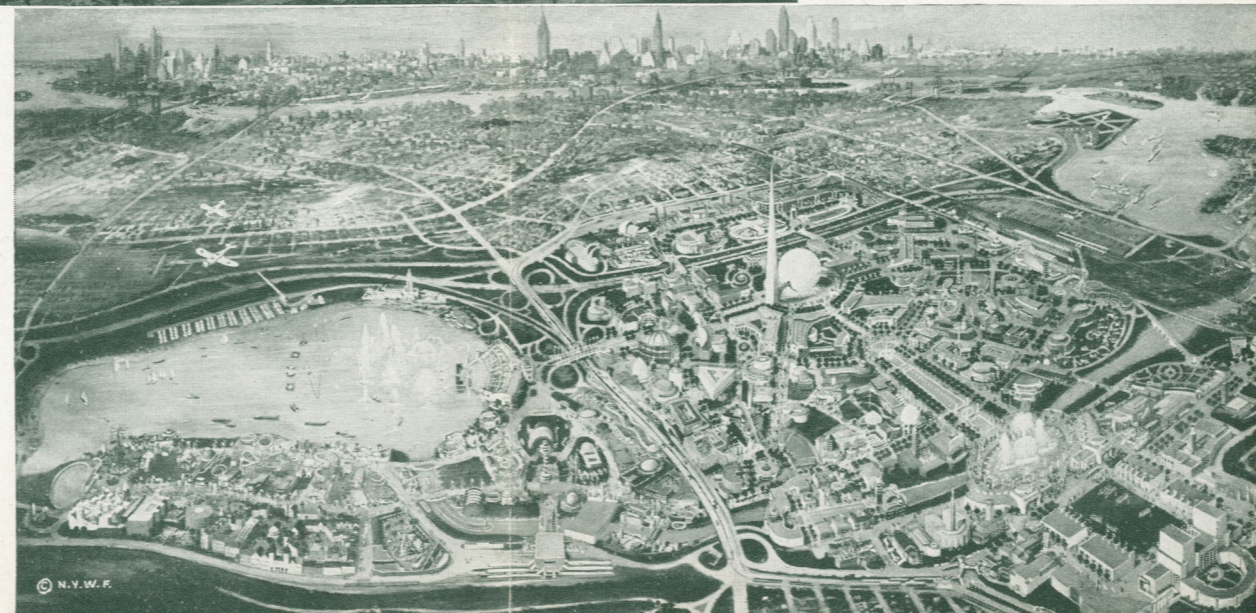
Left: Radio City is visited by all Hiawatha Tour parties.



Above: Railroad Exhibition Building at New York World's Fair, 1939.



Above: Broadway . . . theme of countless songs and tales . . . in its night brilliance



Right: Aero-view of New York World's Fair. Over 1200 acres of wonders of past and present.



### CONDENSED SCHEDULE AND COSTS

Lv. Minneapolis	Saturdays	12:30 PM	\$74.90
Lv. St. Paul	Saturdays	1:00 PM	74.90
Lv. Winona	Saturdays	2:41 PM	73.95
Lv. La Crosse	Saturdays	3:16 PM	72.70
Lv. Wausau	Saturdays	1:05 PM	73.00
Lv. Portage	Saturdays	4:46 PM	68.80
Lv. Milwaukee	Saturdays	6:15 PM	64.90
Ar. Chicago	Saturdays	7:30 PM	
Lv. Northfield	Saturdays	10:21 AM	\$74.90
Lv. Faribault	Saturdays	10:42 AM	74.45
Lv. Owatonna	Saturdays	11:06 AM	73.85
Lv. Austin	Saturdays	11:57 AM	73.75
Lv. Mason City	Saturdays	12:01 PM	72.95
Lv. Calmar	Saturdays	1:36 PM	70.10
Lv. Marquette	Saturdays	2:46 PM	68.45
Lv. Madison	Saturdays	4:55 PM	66.95
Lv. Janesville	Saturdays	5:46 PM	65.50
Ar. Chicago	Saturdays	7:40 PM	

Rates and train schedules from points not shown will be furnished on request.

• See inside pages of this folder for schedule of these Hiawatha "MC" and "GT" tours east of Chicago.

### RETURN SCHEDULE FROM CHICAGO

Lv. Chicago	Saturdays	9:10 AM	10:45 PM
Ar. Janesville	Saturdays	11:14 AM	
Ar. Madison	Saturdays	12:10 PM	
Ar. Marquette	Sundays		3:57 AM
Ar. Calmar	Sundays		5:30 AM
Ar. Mason City	Sundays		7:45 AM
Ar. Austin	Sundays		7:32 AM
Ar. Owatonna	Sundays		8:35 AM
Ar. Faribault	Sundays		8:58 AM
Ar. Northfield	Sundays		9:20 AM
Lv. Chicago	Saturdays	10:00 AM	1:00 PM
Ar. Milwaukee	Saturdays	11:20 AM	2:15 PM
Ar. Portage	Saturdays	1:06 PM	3:38 PM
Ar. Wausau	Saturdays		7:00 PM
Ar. La Crosse	Saturdays	3:05 PM	5:09 PM
Ar. Winona	Saturdays	3:42 PM	5:45 PM
Ar. Red Wing	Saturdays	4:53 PM	6:43 PM
Ar. St. Paul	Saturdays	5:50 PM	7:30 PM
Ar. Minneapolis	Saturdays	6:30 PM	8:00 PM