

HIGH LIGHTS OF THE FAIR

of anti-skid and other characteristics of tires. In the tire plant you will see a finished tire produced every four minutes.

Displaying the progress of time-telling from the pre-historic smoldering rope and the Egyptian slave gong, to the timepiece of tomorrow, the "Chronicle of Time" will be presented. . . . Here also you will see demonstrated the method of determining correct time from the stars.

In the **City of Light** a giant diorama of more than 4,000 buildings studded with 130,000 windows will give you an animated architectural model of New York City . . . here you will also see a complete subway system.

In the **Wonder World of Chemistry** you will see demonstrated the new synthetic textile, Nylon . . . Synthetic Methanol, used in anti-freeze . . . and Nitramon, the explosive so safe to handle and use that it has removed all former transportation hazards.

And there is, of course, the huge **Amusement Zone** . . . a 10,000 seat Fountain Lake Amphitheatre, with a stage on an island and a curtain of rising water where you will see a musical extravaganza **The Aquacade**, with a cast of one thousand, and in the zone proper, foreign villages . . . an American scene of the Gay Nineties . . . old New York, where Steve Brodie jumps from a replica of the Brooklyn Bridge . . . and countless other exhibits as modernistic as the amusement designers can make them.

In the **foreign exhibits** you will see a great French Pavilion, a large part of which will be devoted to good food and wine. . . . In the British Pavilion an old English garden, where tea will be served. . . . The Italian Pavilion perhaps is more mechanized, with their belief that hydroelectric power will be an immense factor in tomorrow's world.

Motor cars, similar to those used at the Chicago fair, will traverse all the main arteries and these are so conveniently reached that at no place has one to walk over 700 feet.

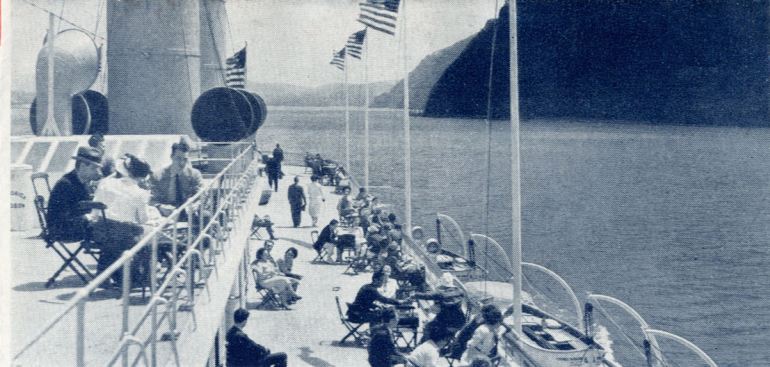
Space does not permit us an opportunity to tell you more in detail of the magnitude of this great spectacle, but here you will see a world of wonders in two hundred buildings—two hundred city blocks in area . . . the Chicago Fair could be put in one corner of this mighty exhibit, which cost—just think—one hundred and fifty million dollars and covers an area of over twelve hundred acres.

STOPOVER IF DESIRED

Tickets on this trip are good for 15 days, allowing an opportunity to stopover in New York and return with another party the following week. Special low hotel rates for members of our tours who stopover.

RETURN VIA WASHINGTON OR NIAGARA FALLS

Rail tickets on this trip are good for return from New York to Chicago via Washington or Niagara Falls, without additional cost. . . . Those who desire this will be sent circular covering on request.



WE SAIL THE SCENIC HUDSON, NEW YORK TO ALBANY



THE CAPITOL, WASHINGTON, D. C.

YOU WILL TRAVEL ON THE PACEMAKER

The New 17-Hour Deluxe Flyer

The Train That Really Sets the Pace

\$35.00

ALL EXPENSE COST

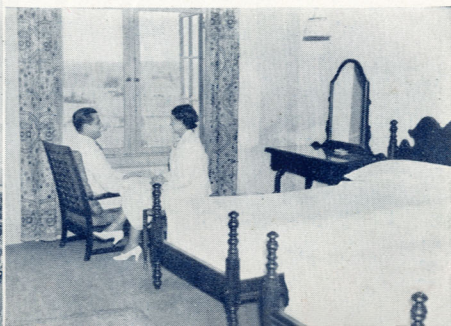
Includes everything except meals while in New York

SO MUCH FOR SO LITTLE

You will have your own large, roomy individual, adjustable reclining seat, specially reserved for you, with laundered linen head-rests. . . . Your train will be air-conditioned throughout, and equipped with scientific diffused lighting with individual lights over each seat. . . . Separate lavatories with toilet compartments. . . . Hot and cold water. . . . Women's dressing and powder rooms. . . . Uniformed attendants to render personal service. . . . Ladies' maid. . . . You have full run of the train . . . stroll about at will . . . no restrictions . . . enjoy the scenes that flow swiftly past . . . relax in the large club-buffet-lounge car, with free magazines and radio, where refreshments and beverages are served at all hours. . . . On this trip, you will really enjoy the feeling of relaxation and freedom from responsibility.



COMMODORE HOTEL
OUR HOME WHILE IN NEW YORK



RATES AND GENERAL INFORMATION

	Tour No. 1	Tour No. 2	Tour No. 3	Tour No. 4
All expense cost from				
CHICAGO	\$47.00	\$44.00	\$40.00	\$35.00

All Tours Include

- Round trip rail transportation.
- Reserved seat on the new 17 hour air conditioned Pacemaker.
- Transfer of passengers and baggage at all points.
- All meals except while in New York.
- Room with twin beds and private bath at luxurious Commodore Hotel, New York. Two persons to a room—Cost for single room with bath, Tour No. 1—\$4.00 . . . Tour No. 2, \$3.00 . . . Tour No. 3, \$2.00 . . . Tour No. 4, \$1.00.
- Sightseeing as shown in itinerary.
- Admission to World's Fair.
- All-day steamer trip on the Hudson River.
- Optional return via Washington or Niagara Falls.

Responsibility

In common with other travel bureaus in arranging for transportation, sightseeing and all other features of these tours, the management acts only as agent and will not be liable or responsible in any way for any change, delay, loss, injury and damage, to or in respect of any person or properties, including baggage, howsoever caused or arising. The right is reserved to decline to accept or retain any person as a member of this tour party at any time.

Baggage — Clothing

A suitcase—or suitcase and overnight bag, should be sufficient to take care of your requirements. Take ordinary summer clothing, flannels, regular sport clothes, a pair of sun glasses and walking shoes most useful.

Make Reservations Early

This Tour will be limited as to numbers, therefore, reservations should be made early as possible. A deposit of \$2.00 will be required to cover each reservation, balance payable one week before departure. In event you are unable to make trip, refund will be made in full.

Supervision

The travel details are being taken care of by Powers Tours, one of Chicago's oldest travel organizations, and the trip is operated in conjunction with the

New York Central System and Hudson River Day Line.

For reservations and further information apply:

Fred D. Chosseck

THE TRAVEL GUIDE

712 N. Water St., Milwaukee, Wis.
Phone DAly 4550

NEW YORK WORLD'S FAIR

PACEMAKER Low Cost TOURS



\$35.00
ALL EXPENSES

LEAVE CHICAGO Every SATURDAY and SUNDAY
MAY TO OCTOBER - 1940
VIA



WATER - LEVEL ROUTE



CLUB — BUFFET — LOUNGE CAR

DON'T MISS THE NEW YORK WORLD'S FAIR . . . SEE IT ALL ON THIS ONE GRAND TRIP

It is almost unbelievable. . . Just think: A vacation trip to the GREATEST FAIR IN THE HISTORY OF THE WORLD, for as little as \$35!

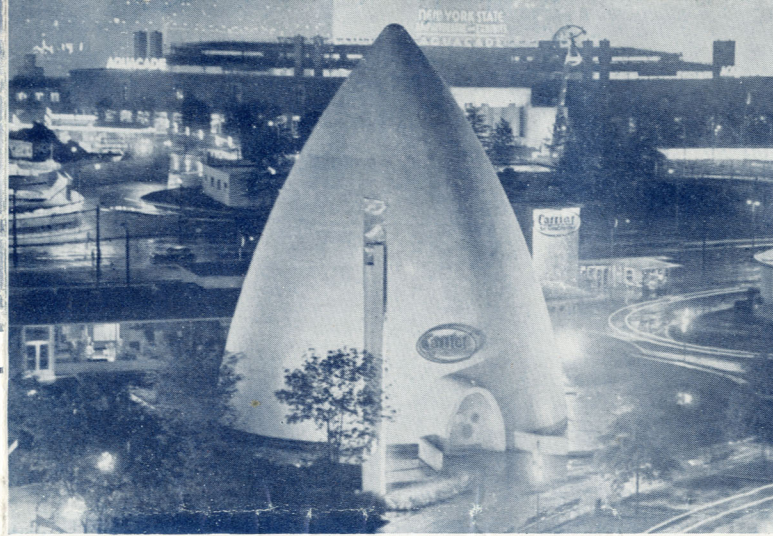
This summer people from every corner of the nation will flock to New York to see their awe-inspiring spectacle and, as a result, hotels will be filled to capacity. . . What a relief it will be to our patrons to know that hotel accommodations are guaranteed and awaiting their arrival!

Here are a few facts worth knowing about our New York home, which is pictured in this folder.

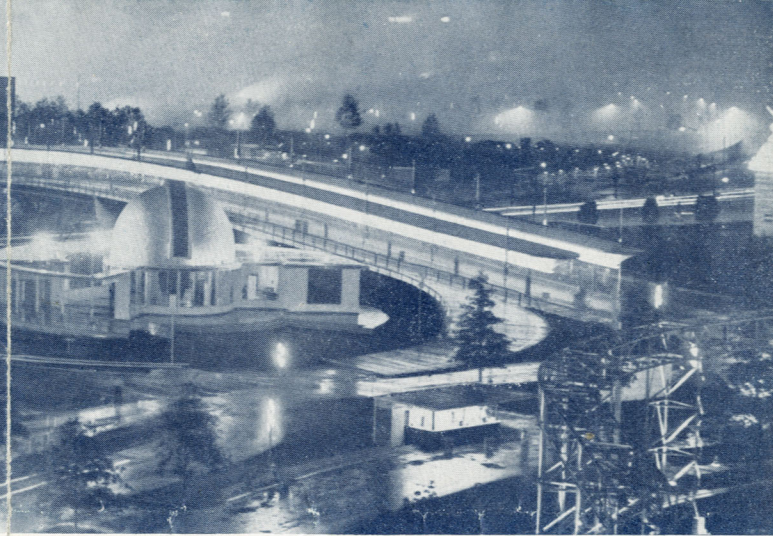
The luxurious Commodore, New York's best located hotel, 42nd Street and Grand Central Terminal, in the very center of all Manhattan's business, entertaining and educational activity. . . No matter what you want to do, or where you want to go, you can do it easier and quicker from the Commodore.

Every one of its 2000 large rooms enjoys an outside exposure and is planned for rest and comfort.

In the lower lobby of this great hotel rapid transit subway express trains carry you right to the World's Fair grounds . . . an extraordinary convenience.



THE FAIR AT NIGHT IS ENCHANTING



PACEMAKER TOUR No. 1 — SEVEN DAYS

LEAVE CHICAGO EVERY SATURDAY AND SUNDAY—FIRST DAY

Our departure at 2 p.m., Central Standard Time, 3 p.m., Chicago Daylight Savings Time, is from the LaSalle Street Station conveniently reached from the Loop elevated platform. Stops are made at Englewood, South Bend, Elkhart, and other points in Indiana and Ohio, to pick up members of the party. We take dinner in our air-conditioned diners as we speed over shining rails to Broadwaytown. . . You will ride in cool, air-conditioned comfort for the entire trip. . . no annoyance from heat and dirt, breathing air that is always fresh. . . because the windows are sealed tight against all impurities. . . Traveling in these modern, air-cooled trains insures your returning from your vacation feeling fresh and fit. . . We ride smoothly over the route of the famous Twentieth Century Limited, along the shores of the Great Lakes, thence through the historic Mohawk Valley.

ARRIVE NEW YORK EVERY SUNDAY OR MONDAY—SECOND DAY

Early morning finds our train humming along, skirting the shores of the scenic Hudson, the most picturesque countryside in the East. . . We take breakfast in our dining car and, at 8 a.m., are in Grand Central Terminal, in Manhattan, the finest and largest station in the world—a city within a city. . . You don't have to wait around and bother with your baggage, as special porters bring it right to your hotel room. . . and you'll agree this is an extraordinary convenience. . . We go to the beautiful Commodore Hotel, where we are assigned twin beds and private bath. . . not more than two to a room. . . no crowding. . . and, of course, for those desiring single rooms, these are available.

Leaving our hotel at 9 a.m., we motor to all points of interest in the world's greatest metropolis. . . "East side, West side, all around the town" . . . accompanied by a guide lecturer, who explains everything of interest. . . We see Millionaires' Row . . . Central Park . . . Riverside Drive . . . tomb of General Grant . . . Columbia University . . . Empire State Building . . . then to the downtown section, where we see the pushcart markets. . . Little Church Around the Corner . . . Greenwich Village . . . Tombs Prison, with its Bridge of Sighs . . . Rockefeller Center . . . Radio City . . . Chrysler Building . . . Woolworth Building . . . Wall Street . . . Stock Exchange . . . Battery Park and Aquarium . . . Ellis Island . . . Ghetto . . . the East Side, most crowded residential area in the world . . . Statue of Liberty . . . shopping center and Fifth Avenue's swanky stores . . . Park Avenue . . . St. Patrick's Cathedral . . . returning to our hotel around 12:30 p.m. . . After this drive

you can truthfully say you have seen everything of real interest in and around the city of New York.

THIRD—FOURTH—FIFTH DAYS IN NEW YORK

The time from Sunday or Monday to Thursday or Friday is available to see the Fair and the countless other points of interest in Greater New York. . . Admission ticket to the Fair is included.

THURSDAY OR FRIDAY—SIXTH DAY

We Sail the Scenic Hudson River

Leaving our hotel at 8:30 a.m., Daylight Savings Time, motor cars transfer us to 42nd Street Pier, where we board the large, commodious Hudson River steamer and sail at 9:20 a.m. . . You have often heard and read about this magnificent trip up the Hudson and through the Catskill Mountains, known as the American Rhine, and you now thrill to the realization of a long desired wish. From a comfortable deck chair you enjoy the cool breezes as the boat slips out of the great Port of New York. Then up the scenic Hudson for 150 miles of ever-changing scenery. . . You will see landmarks of colonial history pass in review . . . the Palisades and Hudson Highlands, where the mountains rise sheer out of the water for 1400 feet . . . the renowned West Point Military Academy . . . Sing Sing prison . . . Sleepy Hollow, setting for Washington Irving's stories of Rip Van Winkle and the Headless Horseman. . . Lunch and dinner are served in the dining saloon, where through wide windows you can still enjoy the scenery as you dine. At 6:15 p.m., Daylight Savings Time, we dock at Albany, where there is an opportunity for a short visit before boarding the Pacemaker and departing at 7 p.m.

FRIDAY OR SATURDAY—SEVENTH DAY

We take breakfast in our dining car and arrive LaSalle Street Station, Chicago, at 8:30 a.m. Daylight Saving Time . . . what a delightful trip!

PACEMAKER TOUR No. 2 — SIX DAYS

Same as Trip No. 1, except that it includes four days and three nights in New York.

PACEMAKER TOUR No. 3 — FIVE DAYS

Same as Trip No. 1, except that it includes three days and two nights in New York.

PACEMAKER TOUR No. 4 — FOUR DAYS

Same as Trip No. 1, except that it includes two days and one night in New York, and does not include the sightseeing trip in New York.



LOWER MANHATTAN AT NIGHT

HIGH LIGHTS OF THE FAIR

First of all, let us give you a brief idea of what is in store for you in the fascinating, awe-inspiring "World of Tomorrow."

Building "The World of Tomorrow" is the theme upon which the whole vast structure of the Fair is based . . . and it is presented so clearly that even the youngest child cannot fail to understand it.

Throughout the grounds modernistic architecture and murals of advanced design are on every side. There are homes of tomorrow, full-size, of four to ten rooms, that you can inspect, having every super-modern device for the housewife of tomorrow.

You will see the great Michelins, that new type of railway car of which France is justly proud . . . a tremendous pneumatic-tired automobile, a hundred feet long, with a twelve-cylinder Panhard engine that drives it, at a dizzy speed, on a standard railroad track—a new type of transportation for The World of Tomorrow.

And there is an Earth-Mars Rocket Ship, which by an adroit combination of movement, light, and sound, will show you a rocket-port, with passengers taking off on a voyage to Mars.

Everyone is interested in railroads . . . You will see England's crack train, the Coronation Scot. . . An Italian Diesel locomotive and a train from far off Australia. . . The railroads of America will show you a 130-foot locomotive weighing 519 tons, the largest in the world, running at full speed on a bed of masonry.

A ten million volt generator will hurl giant bolts of lightning with sufficient force to split tree trunks while wide-eyed you watch this from a safe distance.

Inside the huge Perisphere, which lies beside the slender spire of the Trylon that rises like the beacon of a new age beside it, you will experience today's version of the fabled "Magic Carpet," as on a great escalator you will take a thrilling ride, during which you will seem to float hundreds of feet above the earth, while watching a layout of the "City of Tomorrow."

Mysteries of television will be unfolded in a building resembling a giant radio tube.

In the Motor Exhibit you will see full-sized automobiles racing up spiral ramps and circling the top of another huge building—the elevated highways of tomorrow.

The Steel Center will literally bring the mountains to Mohammed, in presenting a miniature steel plant . . . blast furnaces . . . open hearth furnace and rolling mill.

In the Glass Center you will see more than 20,000 square feet of plate glass, structural glass and glass block . . . glass-blowers in action . . . the spinning of glass filament, one-twentieth the diameter of a human hair, into fabrics.

In the Motor Tire Exhibit from a safe seat in the grandstand, you will see automobiles careening over a huge field, crashing head-on into one another, turning somersaults, and doing other perilous stunts. . . The object of this death-defying exhibition is to afford dramatic testing

AT THE FAIR

FIFTH AVENUE SHOPS

BROADWAY BRIGHT LIGHTS

WALL STREET

AT THE FAIR

NIAGARA FALLS

