

# Double Dividends ON YOUR '40 VACATION

ALWAYS WANTED TO SEE NEW YORK? Must see the World's Fair? This year do both and make your vacation budget pay double dividends.

New York in the spring is a gay place, and summer and autumn speed the pace. The curtain is up on Broadway and the show goes on—the greatest actors in the world on its stages. Museums hold priceless art treasures . . . the secrets of the stars are dramatically revealed in the Planetarium . . . the promise of new and amazing discoveries is found in the towering shafts of Radio City. . . . "Play ball" with the city's three major league baseball teams—the Giants, the Dodgers, the World Champion Yankees. See the champion leather pushers in Madison Square Garden. Visit the Empire State, tallest building in the world. Bask at some of the world's finest beaches.

## FUN . . . FUN and more Fun

ON TO THE FUTURE via the entertaining exhibits of American industry . . . glimpse the onward rush of science . . . the miracles of tomorrow.

Thrill to the merriest, maddest, mightiest entertainment in the world on all sides of you. Fifteen hundred free exhibits . . . breath-taking air shows . . . rollicking parades . . . concerts . . . movies . . . never a dull moment. It's fun . . . fun . . . and more fun . . . and it's FREE.

## Travel AMERICA!

THEIR RICH histories lend romance to the story of the States . . . a story excitingly told at the Fair. One by one, in glorious procession, the scenic beauties and historic landmarks of the American nation march before the eyes of the visitor. In the Court of States you get a United States panorama . . . a knowledge of the industry and culture of every section of the country. The President urges you to "travel America" this year. Travel America . . . TO the Fair . . . and AT the Fair!

## Round the World IN A DAY

TIME WAS when 80 days for circling the globe was a fantastically short time born in the imaginative mind of Jules Verne. Then Howard Hughes girdled the world in four days. And now, in the exotic foreign section of the World's Fair, you can sample the charm and culture, view the life and customs of foreign lands within 24 hours. From the palm-fringed shores of the tropics . . . to the fjords of the north . . . from the boulevards of Paris . . . to the tinkling temple bells of the far-off Orient . . . from the Antilles to the Antipodes, the Fair spans the earth.

This summer you can go "abroad at home"—safely, comfortably—along peaceways that emphasize brotherhood, not bombs.

# Your WORLD'S FAIR FROM MAY 11, 1940

ADMISSION: Adults 50 cents, children 3 to 13 inclusive, 25 cents. Special rates to groups.

EXHIBITORS: The great nations of the world, our own Federal Government; States and Territories . . . industry, labor, civic groups . . . arts and sciences.

AMUSEMENT AREA: The biggest, gayest, Amusement Park in the World.

COST: A \$155,000,000 show with 1,500 free exhibits.

REST ACCOMMODATIONS: Thousands of benches . . . hundreds of conveniently located rest rooms . . . the cool shade of 7,000 trees . . . spacious picnic grounds for family basket-lunches . . . cool, refreshing fountains . . . millions of flowers.

SPECIAL DAYS: You can have a special day dedicated to your community or organization at the Fair. Hundreds of special events already have been booked to give every day a new program.

TRAVEL INFORMATION: Attractive reduced rates. . . . See your local ticket agent . . . also for details for all-expense tours.

FAIR INFORMATION: We invite you to write Information Service, World's Fair of 1940 in New York . . . or phone World's Fair 6-1940.

Copyright, World's Fair of 1940 in New York  
Litho in U. S. A.  
Rogers-Kellogg-Stillson, Inc.

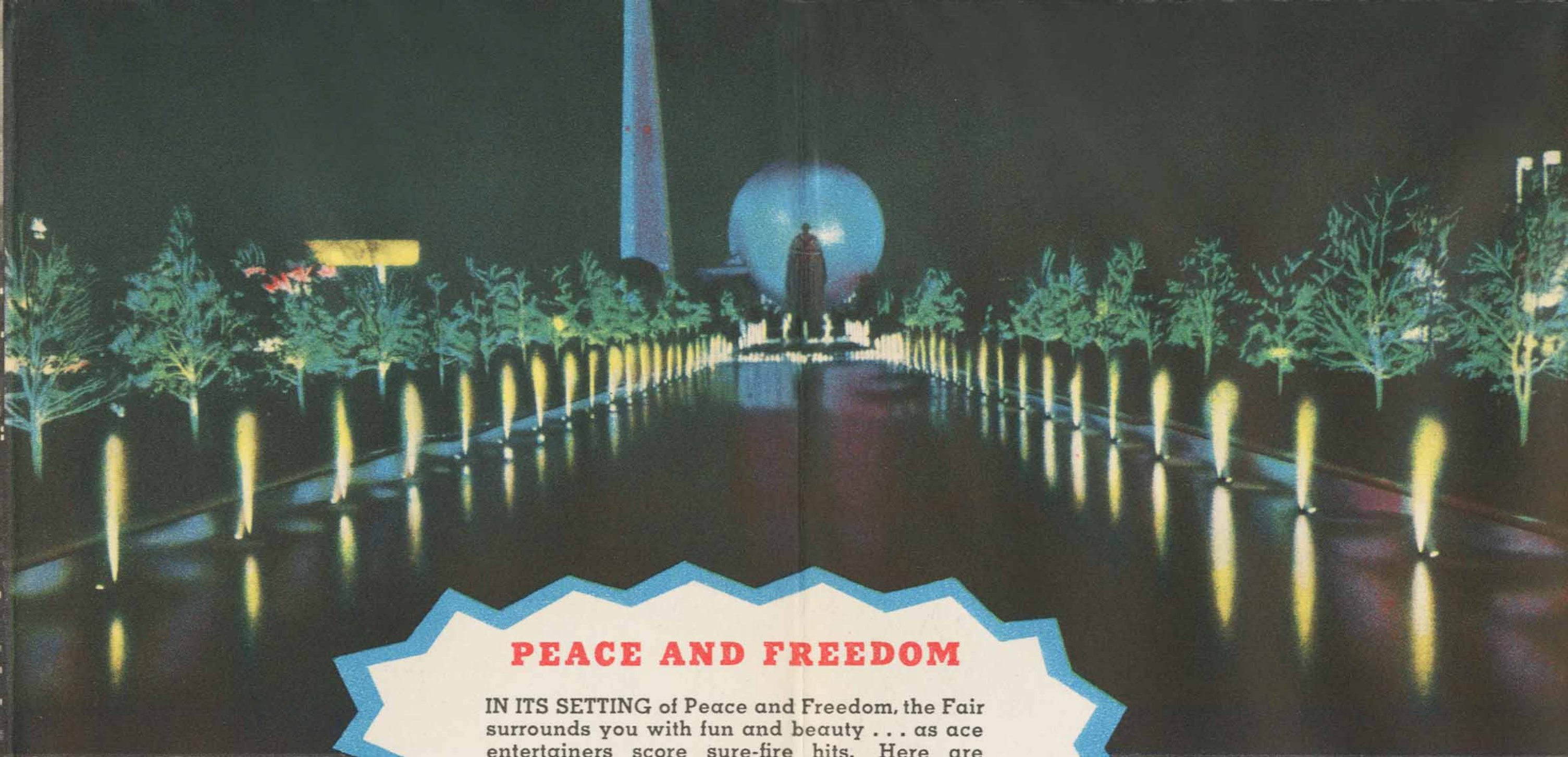


# World's Fair 1940





THE CITY OF LIGHT

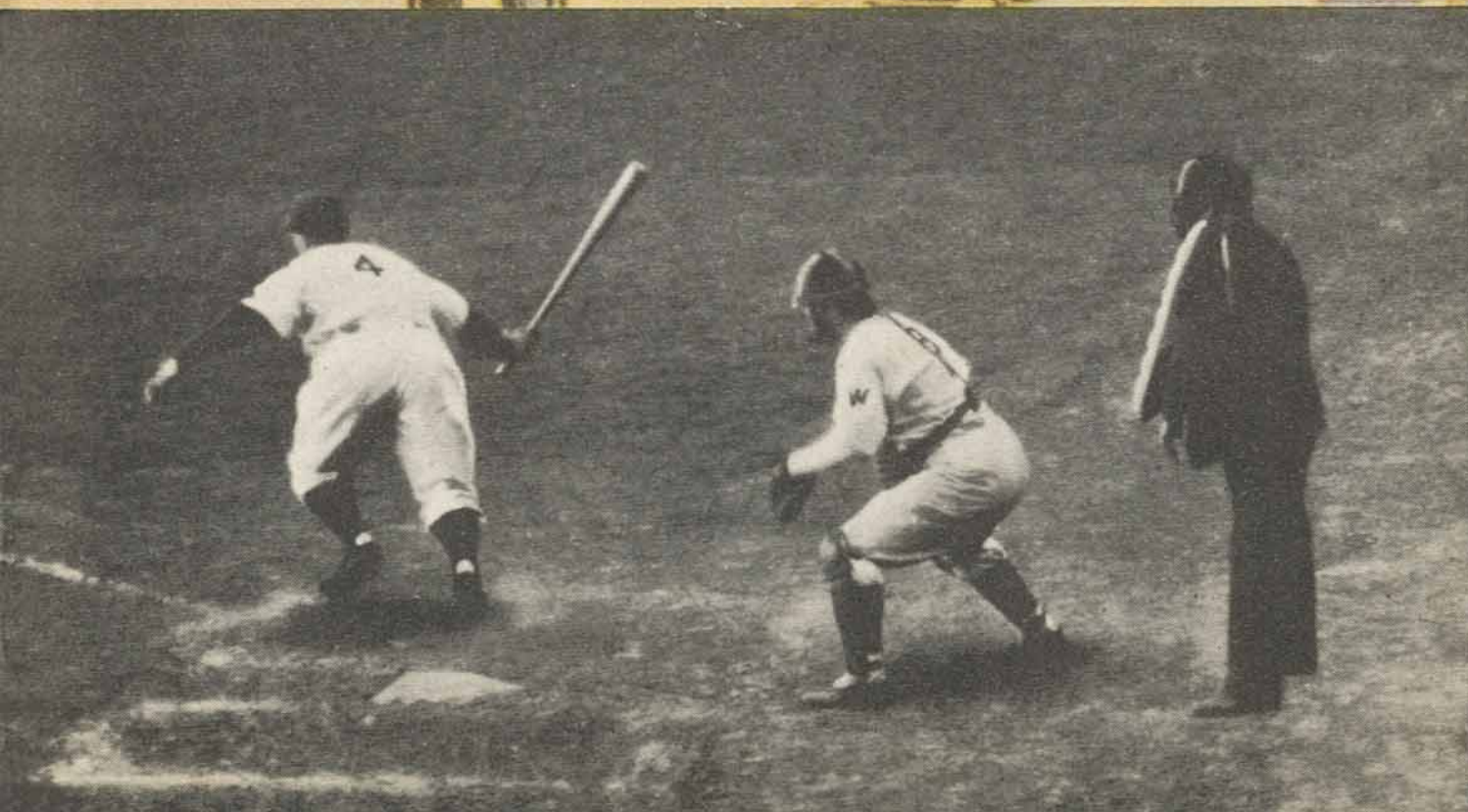
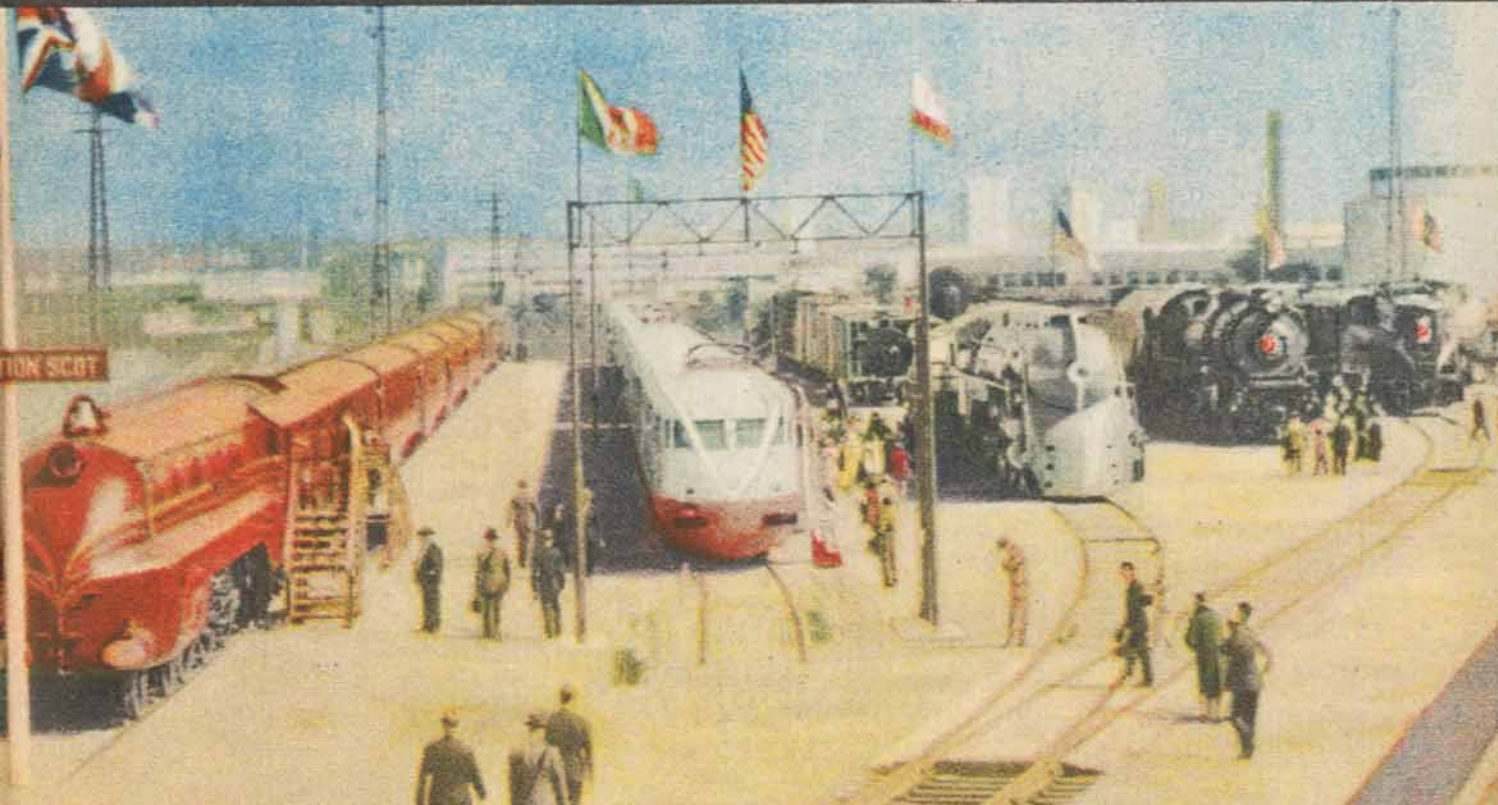


**PEACE AND FREEDOM**

IN ITS SETTING of Peace and Freedom, the Fair surrounds you with fun and beauty . . . as ace entertainers score sure-fire hits. Here are sparkling, informative exhibits of commerce and industry . . . cool, refreshing landscapes . . . the thrills of the biggest city in the world.



Sun Valley beauties steal a dip in one of the Fair's 25 pools and fountains



*New*  
**RAILROADS**  
*on Parade*

A dramatic musical extravaganza with a cast of 250  
4000 seats 25 cents . . . . 4 performances daily

**PRESENTED BY THE EASTERN RAILROADS**

# Straight to the Gate



WORLD'S FAIR  
OF '40

WORLD'S FAIR  
STATION

PENNSYLVANIA STATION  
NEW YORK

DIRECT  
ROUTE

... best in '39... best in '40

More than 15,000,000 people used the Direct Route last year! Why? Because it banishes all confusion when you reach New York. As your Pennsylvania Railroad train from West or South glides into Pennsylvania Station, New York, you merely step to a waiting Long Island Rail Road electric train... in 10 minutes, for 10 cents, you're at the main gate of the Fair. No traffic complications. No hot weather travel over crowded highways... no parking problems... no big-city driving. Only Pennsylvania Railroad offers this exclusive advantage.

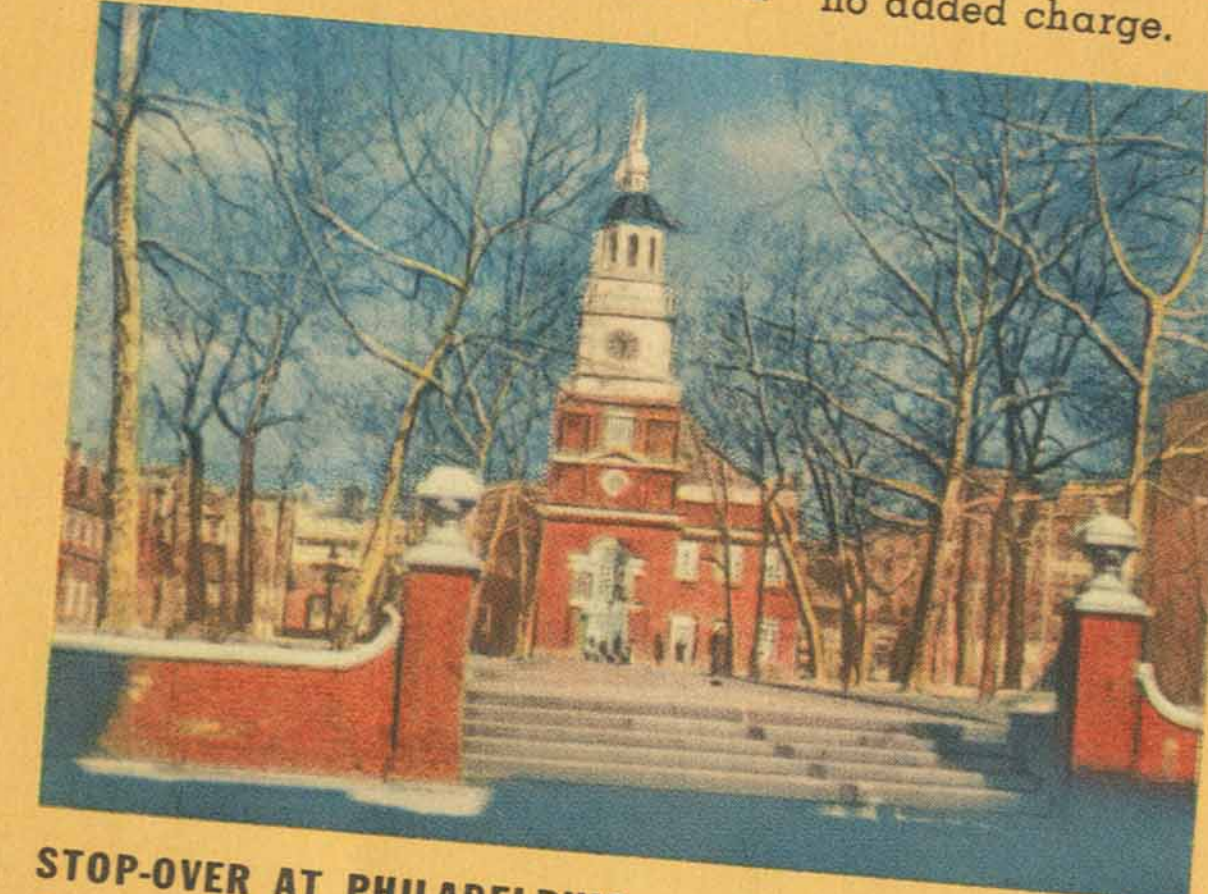
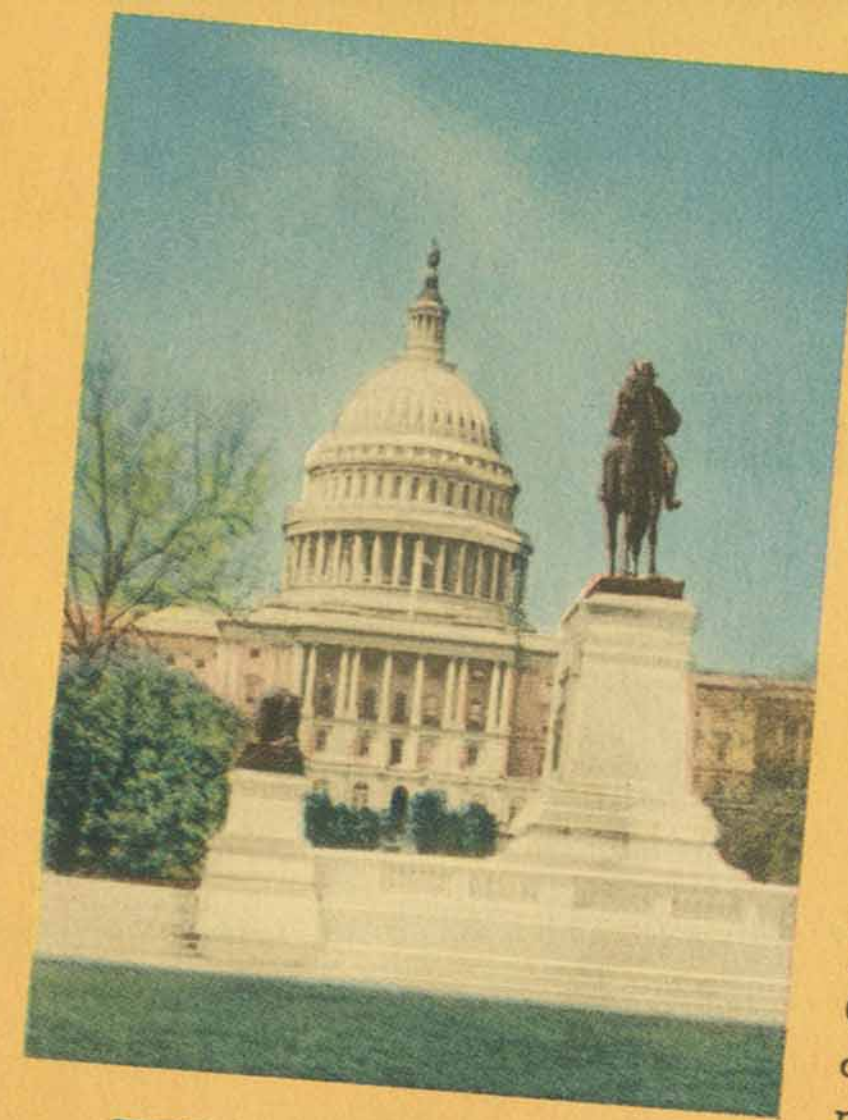
Coaches as well as Pullmans on its principal trains are fully air-conditioned. There's the Pennsylvania Luxury Fleet, with many types of private accommodations and

smartly modernistic lounge and dining cars. Or that sensational de luxe all-coach flyer, The TRAIL BLAZER, Chicago to New York. And many other fast trains daily over the shortest route to New York, offering most convenient connections with leading trains from all the West.

Enjoy speeding behind giant streamlined electric locomotives from Harrisburg, Pa. (195 miles), Washington (226 miles) to New York.

**LOW RAIL FARES**... include thrifty round-trip tickets of varying time limits as well as popular low cost all-expense tours, including hotel accommodations in New York.

**SEE WASHINGTON...**  
Passengers from points West or South west of the Pittsburgh area, may be routed via Washington, D.C., at no extra cost. If you travel one way via Washington, you may go the other way via Niagara Falls from Cleveland, Columbus and points West at no added charge.



**STOP-OVER AT PHILADELPHIA**... the Cradle of Liberty. See Independence Hall, the Liberty Bell, nearby Valley Forge. No charge for stop-over. Side trip to Atlantic City for slight additional charge.

**See 2 Fairs for 1 Fare!**

(New York World's Fair... San Francisco World's Fair)

Grand Circle Tour of U.S.A. ... coast to coast... from your home station and back again... \$90 in coaches, \$135 in Pullmans (plus Pullman charges).

# Pennsylvania Railroad

THE DIRECT ROUTE TO THE FAIR  
STATION ON FAIR GROUNDS

FOR INFORMATION as to fares, schedules, stop-overs, etc., consult the nearest P. R. R. representative whose name appears below:

	Telephone
Akron, Ohio.....	W. W. Clark, District Passenger Agent.....Blackstone 5111
<i>Pennsylvania R. R. Freight Station, Mill and Summit Streets.</i>	
Atlanta, Ga.....	L. E. Jacobs, District Passenger Agent.....Walnut 4333
<i>913 Healey Building, 57 Forsyth Street.</i>	
Atlantic City, N. J.....	T. F. Curley, District Passenger Agent.....4-0111
<i>Pennsylvania-Reading Seashore Lines Station, Arkansas and Arctic Avenues.</i>	
Baltimore, Md.....	Ira B. Yacke, Division Passenger Agent.....PLaza 5430
<i>Baltimore Trust Building, Baltimore and Light Streets.</i>	
Birmingham, Ala.....	H. E. Cain, District Passenger Agent.....7-4523
<i>803 Watts Building, 2008 Third Avenue, N.</i>	
Boston, Mass.....	R. H. Clare, N. E. Passenger Agent.....HUBbard 1144
<i>Chamber of Commerce Building, 80 Federal Street.</i>	
Buffalo, N. Y.....	T. M. Goldsborough, Division Pass. Agt.....CLEveland 5820
<i>916 Liberty Bank Building, Main and Court Streets.</i>	
Chicago, Ill.....	R. G. Caldwell, Division Passenger Agent.....CENtral 7200
<i>1027 American National Bank Building, 33 North La Salle Street.</i>	
Cincinnati, Ohio.....	C. M. Trueb, Division Passenger Agent.....MAIn 3700
<i>106 Dirie Terminal Building, 4th and Walnut Streets.</i>	
Cleveland, Ohio.....	A. C. Sigelen, Division Passenger Agent.....ENDicott 2121
<i>Union Commerce Building, 1108 Chester Avenue.</i>	
Columbus, Ohio.....	H. B. Burchinal, Division Passenger Agent.....MAIn 1121
<i>Lanman Building, 26 South 3rd Street.</i>	
Dallas, Texas.....	C. R. James, District Passenger Agent.....2-9303
<i>1307 Southwestern Life Building, 1506 Main Street.</i>	
Dayton, Ohio.....	S. H. Reaney, District Passenger Agent.....ADams 6161
<i>Van Cleave Hotel, 38 W. First Street.</i>	
Denver, Colo.....	E. F. Cowperthwaite, District Passenger Agent.....Main 4197
<i>921 United States National Bank Building, 817-17th Street.</i>	
Des Moines, Iowa.....	J. G. Reese, Traveling Passenger Agent.....4-3279
<i>624 Fleming Building, 6th and Walnut Streets.</i>	
Detroit, Mich.....	E. M. Presley, Division Passenger Agent.....CADillac 0900
<i>228 Michigan Avenue, Book-Cadillac Hotel.</i>	
Fort Wayne, Ind.....	W. R. Hall, Traveling Passenger Agent.....Anthony 6322
<i>Pennsylvania Station, Baker and Harrison Streets.</i>	
Grand Rapids, Mich.....	A. E. Butin, Traveling Passenger Agent.....8-1161
<i>Pennsylvania Building, Tonia Avenue and Weston Street.</i>	
Harrisburg, Pa.....	W. L. Klink, Division Passenger Agent.....Bell 2-4141
<i>Pennsylvania Station, 35 Grace Street.</i>	
Houston, Texas.....	H. E. Weaver, District Passenger Agent.....PREston 4774
<i>321 Shell Building, 607 Fannin Street.</i>	
Indianapolis, Ind.....	I. W. Adelhelm, Division Passenger Agent.....RILEy 9331
<i>211 Guaranty Building, 20 North Meridian Street.</i>	
Jacksonville, Fla.....	F. J. Roth, District Passenger Agent.....5-3626
<i>409-10 Barnett National Bank Building, Adams and Laura Streets.</i>	
Kansas City, Mo.....	G. E. Carleton, District Passenger Agent.....VIctor 0935
<i>202-204 Railroad Ticket Office Building, 1025 Grand Avenue.</i>	
Los Angeles, Calif.....	Frederick Webb, District Passenger Agent.....TRinity 4688
<i>318 Van Nuys Building, 210 West 7th Street.</i>	
Louisville, Ky.....	G. Russell, District Passenger Agent.....JACKson 2351
<i>112 Sparks Building Arcade, 4th and Walnut Streets.</i>	
Memphis, Tenn.....	J. G. Hammond, District Passenger Agent.....8-3035
<i>424-25 Memphis Cotton Exchange Building, 67-69 Union Avenue.</i>	
Mexico City, Mexico.....	Alfonso Molinar, General Mexican Agent.....ERICsson 2-33-08
<i>Calle de Bolivar 22.</i>	
Miami, Fla.....	Adolph Prescott, Passenger Representative.....3-3760
<i>Ingraham Building, 215 S. E. First Street.</i>	
Milwaukee, Wis.....	J. A. Oliver, District Passenger Agent.....DALy 4850
<i>1410 First Wisconsin National Bank Building, 735 North Water Street.</i>	
Minneapolis, Minn.....	J. H. S. Winne, District Passenger Agent.....ATlanTic 5367
<i>815-15 Metropolitan Life Building, 125 South 3rd Street.</i>	
Newark, N. J.....	W. MacMullin, District Passenger Agent.....MARket 2-4000
<i>National Newark Building, 10 Commerce Street.</i>	
New Haven, Conn.....	L. A. Williams, District Passenger Agent.....7-4222
<i>Powell Building, 157 Church Street.</i>	
New Orleans, La.....	George F. Berkemer, District Passenger Agent.....RAYmond 0913
<i>1237 Canal Bank Building, 210 Baronne Street.</i>	
New York, N. Y.....	J. V. Sowers, Division Passenger Agt.....PENnsylvania 6-6000
<i>Pennsylvania Station, 390 Seventh Avenue.</i>	
Norfolk, Va.....	W. K. Jarvis, District Passenger Agent.....24609
<i>Royster Building, Granby Street and City Hall Avenue.</i>	
Omaha, Nebr.....	M. B. Winn, District Passenger Agent.....ATlanTic 9427
<i>1219-29 City National Bank Building, S. E. Corner 16th and Harney Streets.</i>	
Philadelphia, Pa.....	D. M. Becker, Division Passenger Agent.....SPRUce 4000
<i>609 Broad Street Station, Broad and Market Streets.</i>	
Phoenix, Ariz.....	T. A. Metzger, District Passenger Agent.....4-1514
<i>601 Security Building, 234 North Central Avenue.</i>	
Pittsburgh, Pa.....	L. F. Entrikin, Division Passenger Agent.....GRant 6000
<i>710 Pennsylvania Station, Liberty Avenue and Grant Street.</i>	
Portland, Ore.....	E. W. Mosher, District Passenger Agent.....BEAcon 4081
<i>345 Pacific Building, 520 S. W. Yamhill Street.</i>	
St. Louis, Mo.....	R. M. Harvey, Division Passenger Agent.....MAIn 3200
<i>1006 Syndicate Trust Building, 915 Olive Street.</i>	
St. Paul, Minn.....	L. B. Poore, District Passenger Agent.....CEDar 1727
<i>801 Pioneer Building, 4th and Robert Streets.</i>	
San Antonio, Texas.....	Douglas Seaman, Traveling Passenger Agent.....FANNin 8021
<i>817 Majestic Building, 212 East Houston Street.</i>	
San Francisco, Calif.....	M. F. Van Horn, District Passenger Agent.....SUTter 1942
<i>507 Monadnock Building, 681 Market Street.</i>	
Seattle, Wash.....	E. C. Kellogg, District Passenger Agent.....ELlIott 8590
<i>3302 White Building, 1338 Fourth Avenue.</i>	
Toledo, Ohio.....	V. W. Boes, Traveling Passenger Agent.....ADams 5181
<i>145 Superior Street, Commodore Perry Hotel.</i>	
Toronto, Ont.....	H. E. Heal, Canadian Passenger Agent.....ELgin 7220
<i>608 Canadian Pacific Building, 69 Yonge Street.</i>	
Tulsa, Okla.....	W. L. Wright, Jr., District Passenger Agent.....3-2662
<i>409 National Bank of Tulsa Building, 320 S. Boston Avenue.</i>	
Washington, D. C.....	H. A. Karr, Division Passenger Agent.....DIStrict 1424
<i>626 Fourteenth Street, N. W.</i>	
Wilmington, Del.....	W. N. Pippin, District Passenger Agent.....7241
<i>Delaware Trust Building, 914 Market Street.</i>	
C. E. McCULLOUGH, Gen. Pass. Agent, Union Station, Chicago, Ill.	
ALAN B. SMITH, Gen. Pass. Agent, Pennsylvania Station, Pittsburgh, Pa.	
F. McD. QUINN, Gen. Pass. Agent, Broad St. Station, Philadelphia, Pa.	
A. H. SHAW, Gen. Pass. Agent, Pennsylvania Station, New York, N. Y.	
R. B. COOKE, Gen. Pass. Agent, Royster Building, Norfolk, Va.	
C. G. PENNINGTON, Gen. Pass. Agt., 626 14th St., N. W., Washington, D. C.	

Re-Discover America in 1940... by Rail

# American Jubilee



**PLENTY OF ROOMS**  
at low prices

AMERICA STRIDES the stage in this romantic, song-spun review fusing musical comedy, circus, opera and pageant. The great names of the entertainment world are here—Arthur Schwartz, Oscar Hammerstein, II, Leon Leonidoff of Radio City Music Hall, and Albert Johnson. They've blended their talents in a star-spangled spectacle rivaling anything the theatre has seen in scope and splendor.

The four outstanding episodes in the rise of a mighty nation parade before your eyes. The inauguration of George Washington . . . the feverish story of discovery of gold in California . . . a tumultuous welcome to Jenny Lind . . . "Swords and Roses," ending as President Lincoln enters Ford's theatre . . . then the Gay Nineties cavalcade, thundering to a climax with Teddy Roosevelt.

Three hundred performers and forty trained horses take part in this great spectacle . . . and you can see it at the Forty Fair for forty cents.

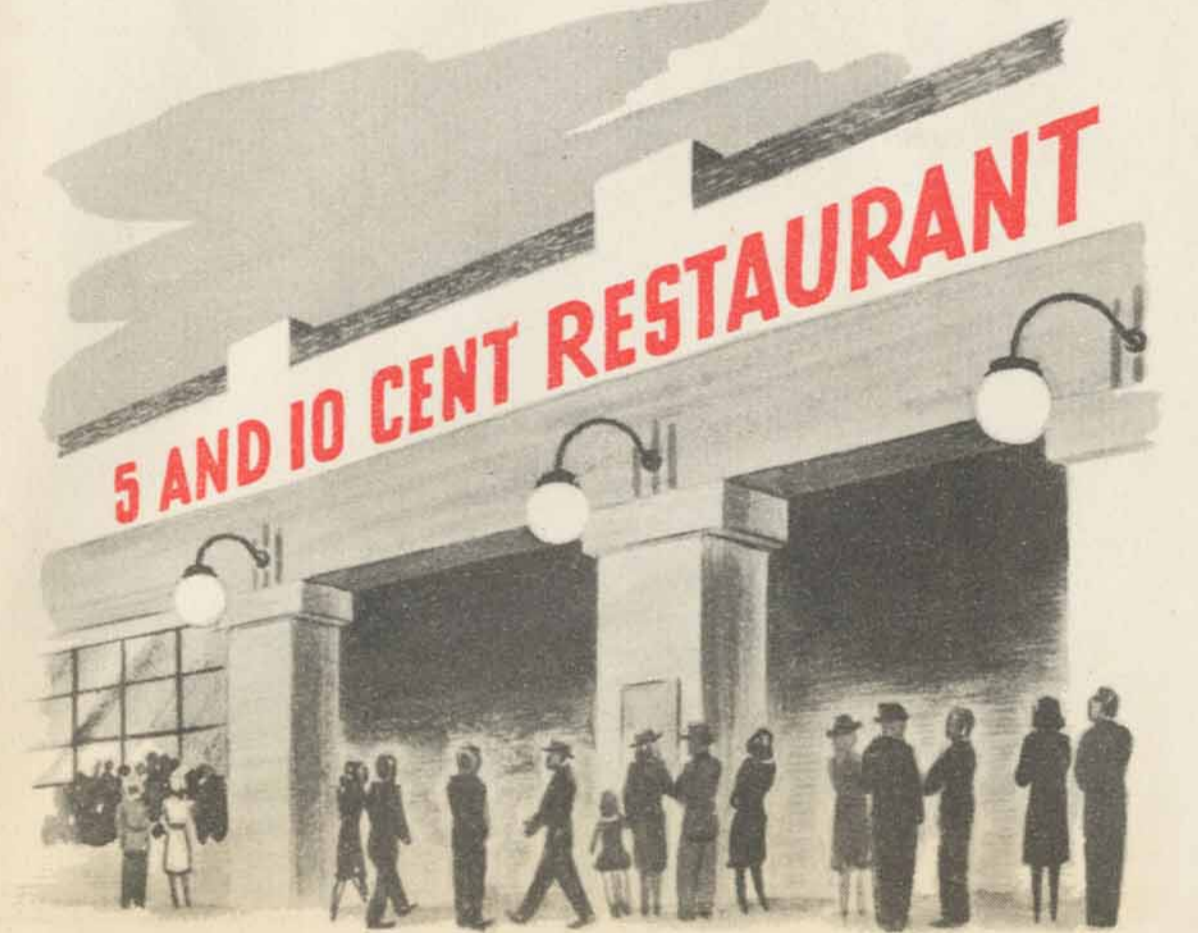


NEW YORK CITY can accommodate daily approximately 600,000 visitors. Hotels can care for about 80,000 between \$1.50 and \$3.00 per day and about 170,000 more between \$3.00 and \$5.00 per day. In addition there are registered and inspected private homes and rooming houses which will accommodate about 200,000 at \$1.00 and \$1.50 per day per person.

Information regarding rooms in hotels may be obtained through the Hotel Association of New York City, Inc., 221 West 57th Street—Circle 7-0800, or see your local travel agent. Rooms in hotels and private homes may also be obtained through the Mayor's Official World's Fair Rooming Bureau, Chanin Building, 42nd Street and Lexington Avenue—Murray Hill 3-1150. Write, telephone or telegraph to either of the above bureaus for information on rates and location.

The latch-string is out for you all summer—Come when you like—Stay where you like—As long as you like—At rates that are right.

## EAT WITHIN YOUR BUDGET



Here you can eat to your heart's content and keep your pocketbook contented too. The Fair's new 5 and 10 cent restaurant strikes the 1940 keynote of good food at low prices.

Just plunk your 5 and 10 cent pieces on the counter and watch the fine food appear. Thick sandwiches for thin dimes . . . tempting desserts and other delicious dishes at sweet and low rates . . . no item on the menu more than 10 cents . . . many only a nickel.

**PAMPER YOUR APPETITE** and coddle your purse! Choose from over 80 eating places on the grounds for good food at low prices. Restaurants, snack bars, soda fountains, cafeterias and lunch counters dot the avenues and are located in many exhibit buildings. Hot dogs and hamburgers are a dime. Coffee is 5 and 10 cents and Coca-



**DOROTHY LAMOUR** gets a 15 cent snack. (Above) A picnic on the grounds.

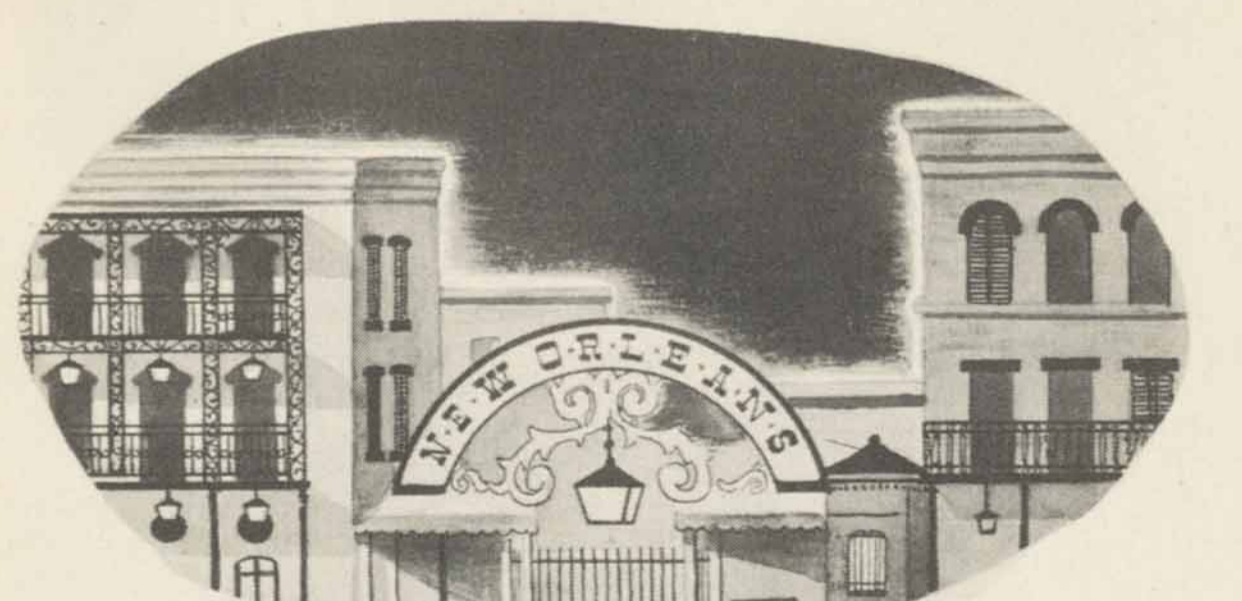


Cola and other bottled beverages a nickel. Milk is 5 and 10 cents a bottle. In the city and at the Fair, you can have a breakfast for 25 cents, a lunch for 45 cents, a dinner for 65 cents.

If you have a yen for foreign foods, you can eat in any language . . . canard natais l'orange from France . . . arroz con pollo from Cuba . . . reindeer steak from Finland. . . . Prices in the Foreign Pavilions are higher, but the chefs are internationally famous, and the cuisine and service de luxe.

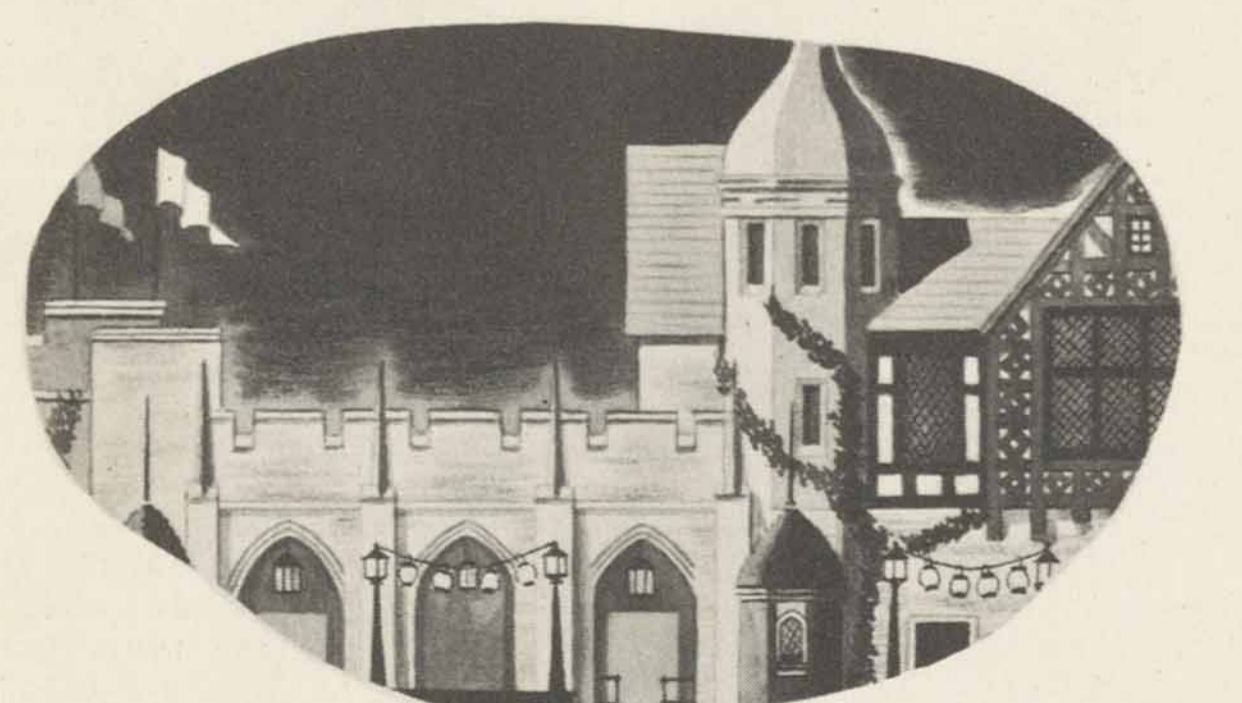
Or pack a lunch, relax beneath a striped umbrella on one of the Fair's free rest grounds, and picnic in comfort.

## NEW ORLEANS



THE MARDI GRAS spirit reigns in this New Amusement Area show. Enjoy the famous New Orleans French Quarter . . . visit a night-club featuring Southern "blues" . . . get that carnival thrill in a unique entertainment centre.

## CAMPUS



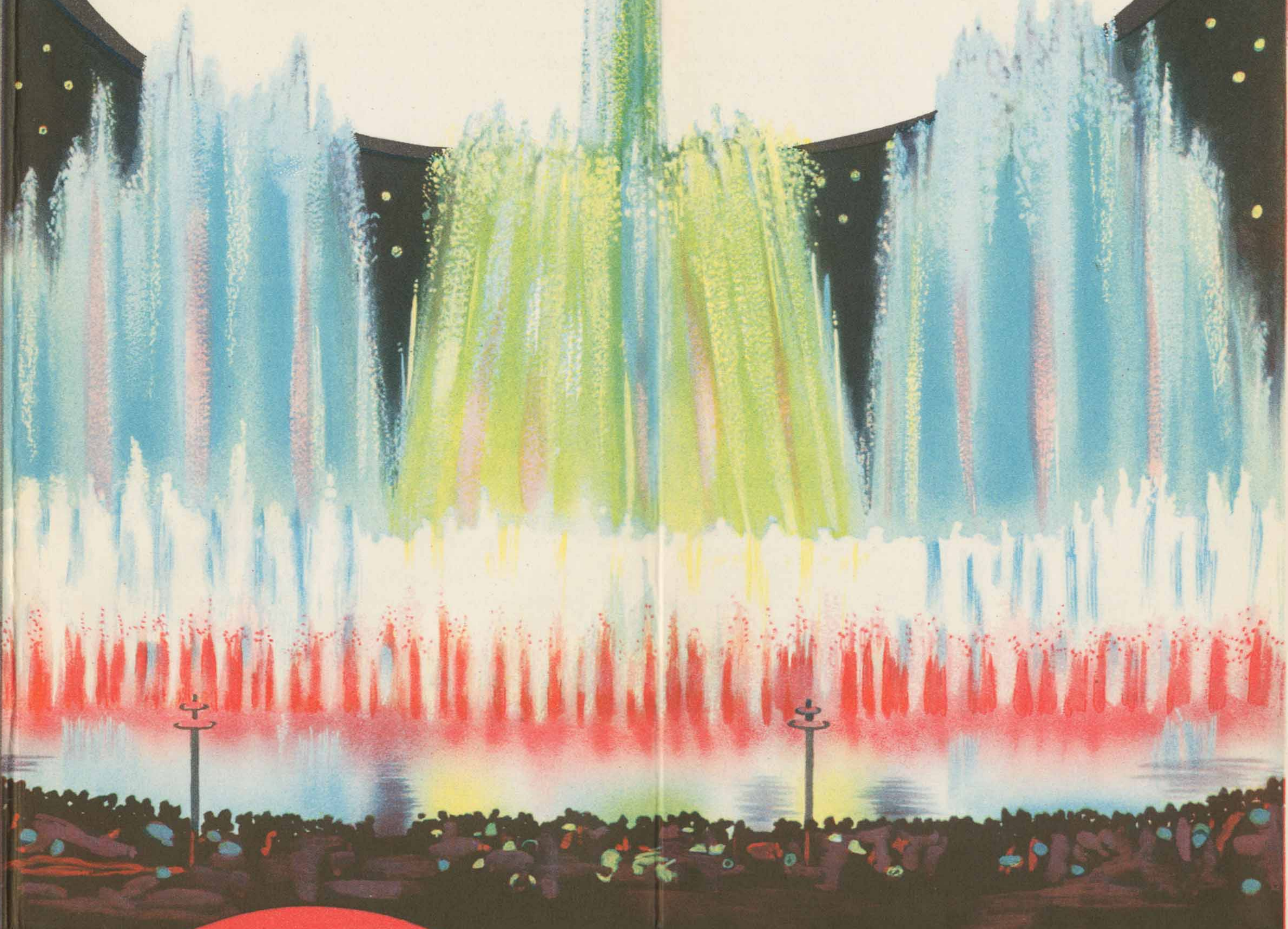
THE "RAH-RAH-RAH" SPIRIT of Old Siwash and Boole-Boole rules over the Dancing Campus, one of the new and colorful amusement features. Riot with the jitterbugs in an atmosphere of collegiate high-jinks. See Flirtation Walk, Dance Prom, college shops and restaurants, football, and a gay musical review of campus life.

## THE MAGIC FOUNTAINS

COMBINING WATER, fire and sound in a starlit symphony, this inspiring show is given nightly at the Lagoon of Nations . . . FREE! Never before have engineering skill and great art joined to create such a miracle of light and color. Poets, in their most fantastic flights of fancy, have rarely envisioned a wildness and beauty to match it.

Pillars of water rise high in the air . . . flames dart from hidden sources . . . fireworks burst high above in resplendent glory . . . Music, perfectly synchronized with these myriad effects, rounds out one of the most glorious ensembles ever conceived.

And coolness goes with the wind as 25 fountains, alive with beauty, spread refreshing breezes over the Fair . . . day and night . . . all summer.



## NEW Aquacade

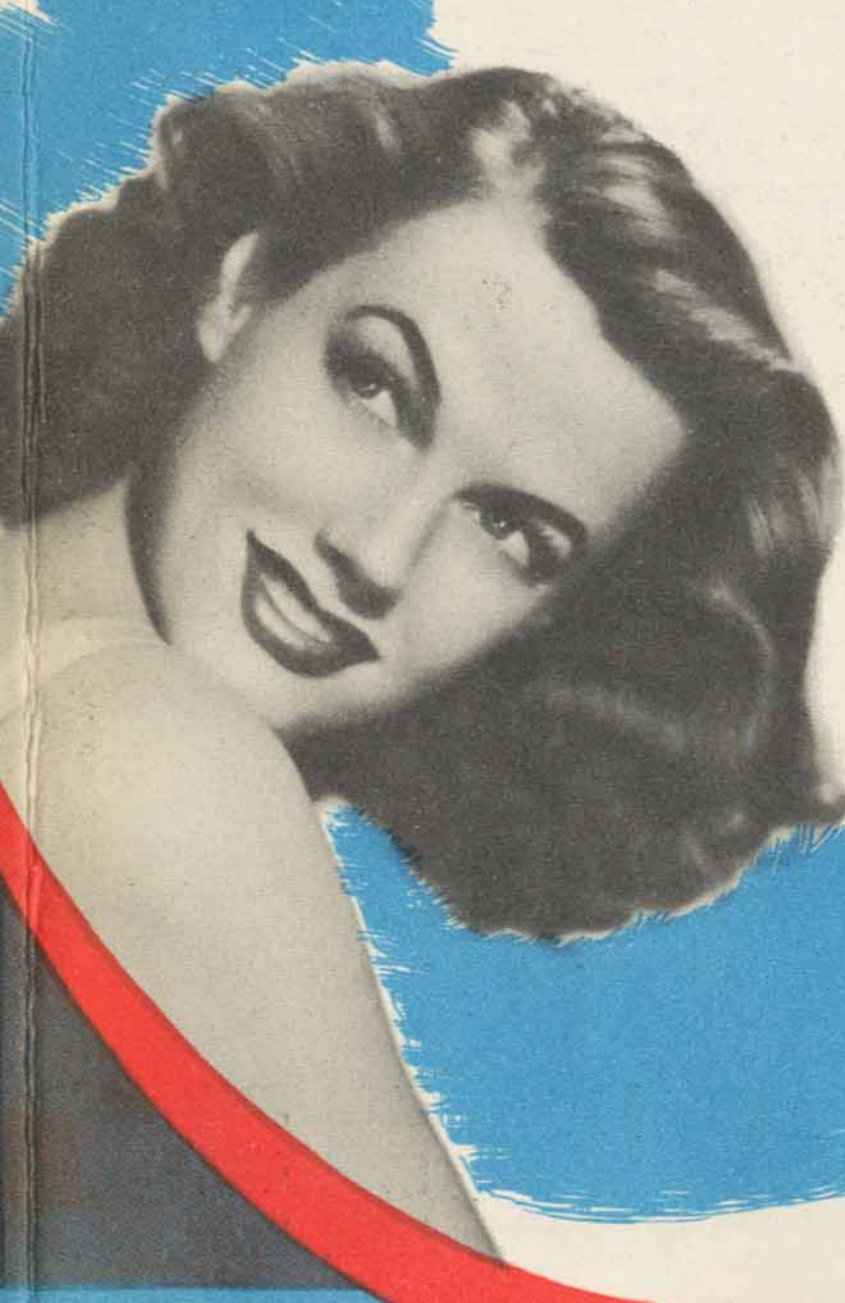
NEW IN EVERY WAY. New stars . . . new songs . . . new costumes . . . new water formations . . . new fountain display . . . all join to present a brand new show topping the famous '39 spectacle applauded by 5,000,000 people.

See the midways of the four biggest Fairs in American history ablaze with electric lights. Thrill to the Phosphorescent Fantasy as graceful girls glide over the water of changing colors.

Billy Rose, master showman, has outdone himself.

The incomparable Eleanor Holm is back to lead the greatest array of swimming stars ever assembled in one show. Costumes and scenery were designed by the noted Raoul Pene Du-bois and the entire production is again staged by John Murray Anderson.

Thousands of seats at 40¢ . . . a top-notch show at a rock-bottom price.



See the Fair with us for **FIFTY THRIFTY CENTS**  
CHILDREN UNDER 14, TWENTY-FIVE CENTS

