

PULLMAN

TRAVEL AND SLEEP IN PULLMAN
SAFETY AND COMFORT

PULLMAN



Welcome to the New York World's Fair and the Pullman Exhibit

THE New York World's Fair, 1939 bids you welcome to its myriad attractions, and The Pullman Company joins in this welcome with a special invitation to inspect its exhibit. To visualize—first hand—the high standards of travel-comfort afforded through Pullman service. The five Pullman cars shown—that constitute the track exhibit—demonstrate the most attractive and comfortable transportation accommodations offered travelers in any part of the world. For more than 80 years Pullman service has represented progress without end. We welcome you in the hope that your visit will produce a lasting impression of the advantages of Pullman travel.

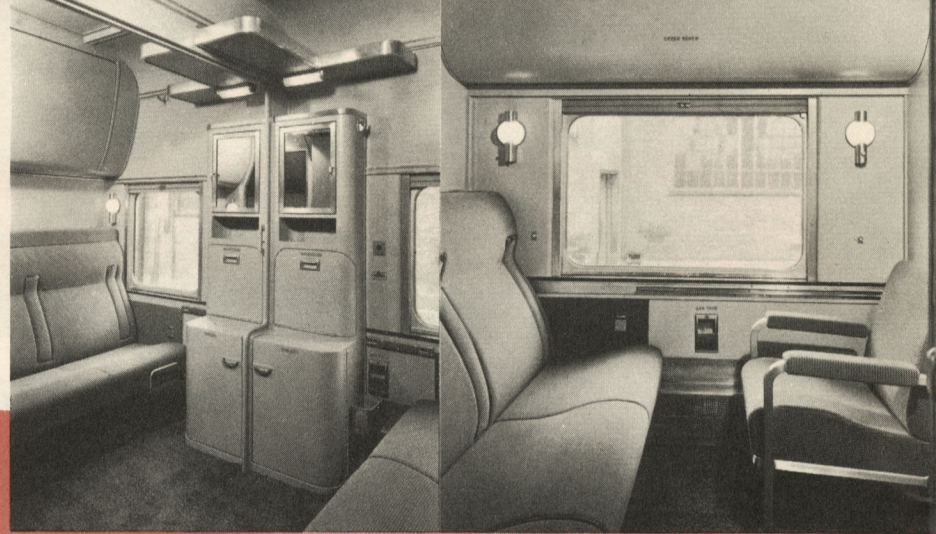
In order that you may be able to see and inspect every type of accommodation now offered the public by Pullman—accommodations to fit every need and every purse—the exhibit presents five Pullman cars, namely: 1. the “Car of Tomorrow”—a lounge-observation-buffet sleeping car—the last word in travel comfort; 2. the “Roomette” car—one of Pullman's latest contributions to modern travel; 3. the “Duplex” car—with accommodations “upstairs” and “downstairs;” 4. the “Standard” Pullman car—with sections, bedrooms and one compartment and 5. the “Tourist” car.

Because we enjoy being your host, the business of transportation has become to us a pleasurable art, a profession worthy of the best that is in us. Every one in the Pullman organization knows the value of a friendly service.

On the following pages you will find illustrated and described the several cars just mentioned; also a description of the various features of Pullman service. Keep this book for future reference as an aid in selecting your Pullman space the next time you travel.



*The spacious New
Drawing Room*



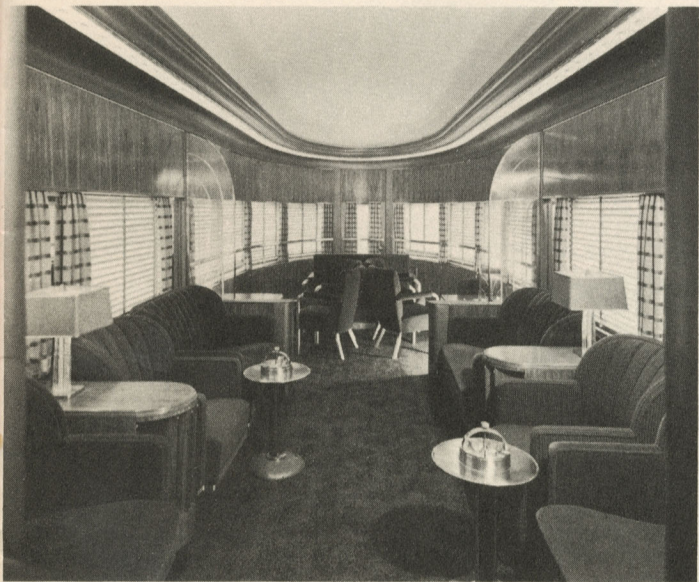
Connecting Double Bedrooms

The New Compartment



The Car of Tomorrow

THE “Car of Tomorrow”—a modern lightweight car—transcends all previous triumphs. Harmony of color and decoration impress each visitor with the very first glimpse of its interior. The walls are in carefully matched figured red gum and the ceiling a delicate ivory. You tread softly on a carpet of 2-tone brown; the window drapes are of the same hue but with stripes, and venetian blinds of special design and construction carry out the carefully designed color contrast. There are rest-inviting sofas in blue, and lounge chairs in red and in copper-striped material. A figured red gum writing desk and magazine table blend with the walls. Beyond the observation, the walls are in 2-tone cork and the ceiling in beige. The lounge and observation sections are separated by panels of synthetic glass. Indirect lighting enhances the entire interior. There is a completely equipped buffet. The modern drawing room radiates spaciousness. A long sofa of comfortable contour becomes a sleep-inviting bed at night, 6 feet 5 inches long. Above the sofa is an upper berth and a third bed emerges from the wall, both of the same length. There are two folding lounge chairs. This accommodation, like all rooms shown on Pullman exhibit train, is air-conditioned, has individual toilet facilities, regulation of light, ventilation and heat. The compartment has a sofa of similar dimensions, also convertible into a bed, and an upper berth. A lounge chair, similar to that in the drawing room, is available. There are wide, observation type windows, and sliding tables adjustable to a comfortable height. Both rooms just described are decorated with light blue ceilings, walls in light fawn; the sofas are blue upholstered and the chairs have rust colored coverings. The two double bedrooms each contains a sofa-bed and an upper berth, and have all the individual facilities found in Pullman rooms. These bedrooms are separated by a folding wall, permitting their use as individual units, or as one large room. The “Car of Tomorrow” is indeed a thing of beauty.



A luxurious observation lounge radiates comfort



A folding washstand and cabinet

*At night the Roomette offers a
sleep-inviting bed*



The Roomette Car



You can enjoy your meal in the privacy of your Roomette

THE exterior decoration of the Roomette car is the same as the “Car of Tomorrow,” finished in two shades of grey, except that in the former the striping is sparkling and accentuated, in raised, stainless steel, and lettering which shines like polished silver. In the Roomette car the striping and lettering is in aluminum paint. The car is of modern lightweight construction. The 18 Roomettes are identical in decoration. The upholstery is in rust coloring, the walls are blue-green in tone with the ceilings of a lighter tint. The Roomette unit is one of Pullman’s latest and most popular accommodations.

Designed to afford greater privacy, at moderate cost, it is a completely enclosed private room with individual toilet facilities and ideal for one passenger. The bed folds into one wall for day travel, and at night can be easily raised, making all the facilities readily accessible, or affording additional dressing space when desired. When prepared for night occupancy an automatic lock holds the bed horizontally, and reverses to keep the bedding undisturbed when it is raised. During the daytime a comfortable sofa-seat, upholstered in sponge rubber with velour cover, and arm rests, is conveniently located to afford a full view through the single wide window. There is a mirrored cabinet for toilet articles, a locker in which to hang clothes; a large rack for luggage and a vacuum water bottle in cabinet. The door of the “Roomette” can be locked at night, or left open and a curtain drawn across the opening. A movable footrest is available if desired.

The Roomette is an ideal accommodation for the Pullman passenger traveling alone. It has a popular appeal, and at the present time it is available on certain Eastern and Western lines.



View of upper rooms showing short stairway from the car floor level

The Duplex Car



Lower level rooms offer ample room for daylight visits



THE third car in the Pullman travel exhibit with its striking travel innovations is the "Duplex" car, a modern lightweight, streamlined pullman. The exterior is in two shades of Tuscan red and delicate gold horizontal striping is used above and below the windows. This car is also of modern lightweight construction. It contains 12 duplex rooms and five double bedrooms. Strange as it may seem, duplex rooms offer the traveler a choice of traveling "upstairs" or "downstairs."

There are two eye-appealing decorative schemes in the rooms, one having cream ceilings, walls in two shades of blue, upholstery in rust, window shades in grey-blue and gold. The other combination offers light ivory ceilings, walls in two shades of brown, upholstery in blue and shades of cream and brown. The carpets are of brown twist. Half the duplex rooms are on the floor level, the remainder three steps higher. This is another ideal accommodation for one person. There is a large, roomy sofa convertible into a full-length bed. Individual toilet facilities, control of temperature and light, a folding washstand and table; these are some of its travel-comforts. Sliding panels in some rooms permit en suite occupancy. There is a table that folds against the wall which can be used for writing, serving meals and other purposes. This accommodation is available on certain Eastern and Western Lines. It has been truly said—It's smart to travel in a Duplex room. The five double bedrooms in this car each contain a sofa bed, upper berth, toilet facilities, folding washstand and other private room conveniences. Some of the bedrooms permit en suite occupancy.

Comfort DeLuxe in Duplex Room

The Standard Pullman Car



Compartment



Double Bedroom





Connecting Bedrooms



Section



Convertible Section

THE Standard Pullman Car is no exception in this exhibit line of Pullman's latest and finest travel comforts. The exterior is of standard Pullman green. This car contains 10 sections, 2 connecting double bedrooms and one compartment. The interior and section portion of the car is painted in several tones of tan, the seat covering is a horizontal brown-striped fabric, the window curtains are in orange rust and the carpet of 2-tone cedar color. The bedrooms carry out this scheme except that the upholstery is a small check design and the carpet a monotone of cedar. The compartment walls are in grey, the ceiling is light rust in color, and the seat covering is of deep blue. The compartment in the standard car has an upper and lower berth, complete toilet facilities, separate heat control and other conveniences to be found in Pullman private rooms, such as large mirrors, adequate lighting facilities and wardrobe. Each connecting double bedroom contains a wide, comfortable sofa that becomes a bed at night. Above the sofa is an upper berth. The room offers private toilet facilities, a folding wash basin, hinged desk, plenty of mirrors, adequate lighting and individual heat control.

The section consists of two berths, an upper and lower; the upper berth is the lowest priced accommodation in a Pullman car. It has electric lights, a shelf to hold luggage or clothing, an electric bell with which to summon porter at any hour and forms a bed over 6 feet in length and 35 inches wide. There are two pillows containing the finest goose feathers, a comfortable mattress with spring base and heavy curtains that fasten securely from the inside for complete privacy. A safety ladder makes access and exit easy. The lower berth is also furnished with electric lights, shelf for luggage, hammock for clothes as well as clothes hangers and a bell with which to summon the porter. The occupant has two fine pillows, a most comfortable mattress and relaxes on a bed 6 feet 2 inches long. Heavy curtains can be securely fastened from the inside. Both upper and lower berth passengers enjoy air-conditioning, adequate ventilation and lights for night reading.

The section is the combination of an upper and lower berth. It has all the conveniences described for the two aforementioned accommodations. The "single occupancy section" which gives the occupant exclusive use of this accommodation, is a favorite with many whenever they travel Pullman. The Pullman system now offers the new convertible feature. Half the bed folds upward; providing ample dressing space and shelf for toilet articles. The bed is easily raised or lowered by occupant or the porter from aisle without intrusion on passenger's privacy.

Upper and Lower Berths

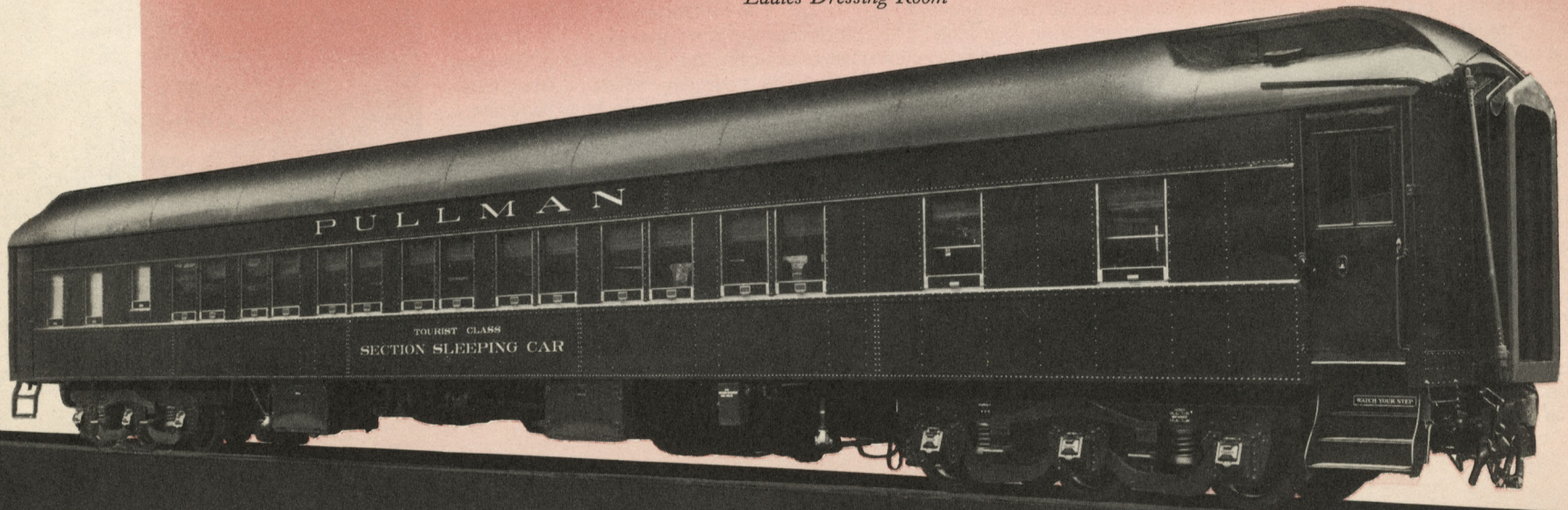




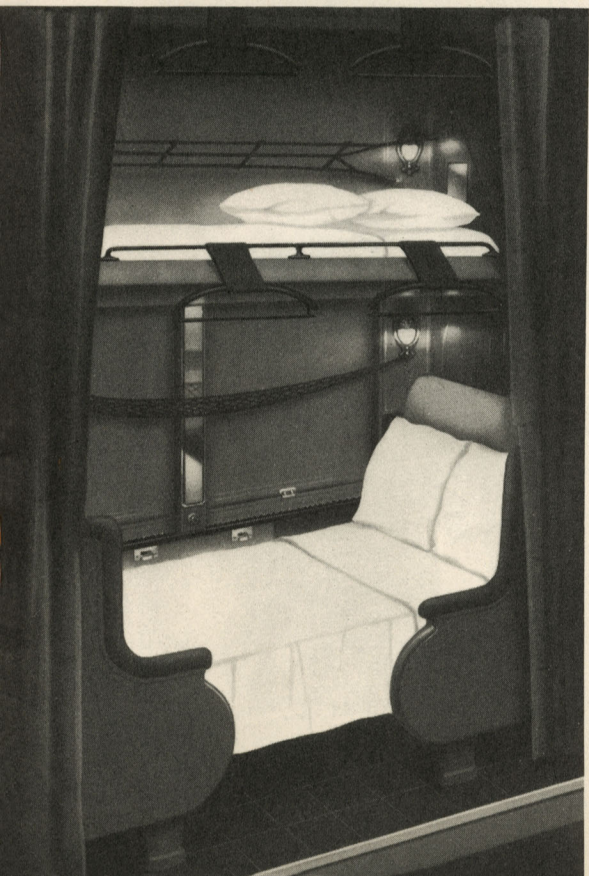
Ladies Dressing Room



Comfortable daylight travel quarters



Tourist Class Accommodations



THE last car in the Pullman track exhibit is the tourist car. It contains 16 sections, upholstered in green and with walls and ceiling of mahogany finish. Both the upper and lower berths have a shelf for luggage or clothing, hangers for clothes and an electric bell to summon porter. Each berth has a horsehair mattress, two pillows, blankets and sheets. The upper berth provides a comfortable bed over 6 feet in length and the lower berth is 6 feet 2 inches long. For daytime travel each seat contains ample room for two passengers, affording comfortable lounging space.

Tourist class accommodations offer a comfortable means of travel at a cost lower than that for standard accommodations of the same type. However, since the cost is less the passenger does not have all the conveniences afforded in standard Pullman service. The tourist car is operated over some lines and between certain points west of Chicago and the Mississippi River.

Tourist class upper and lower berths

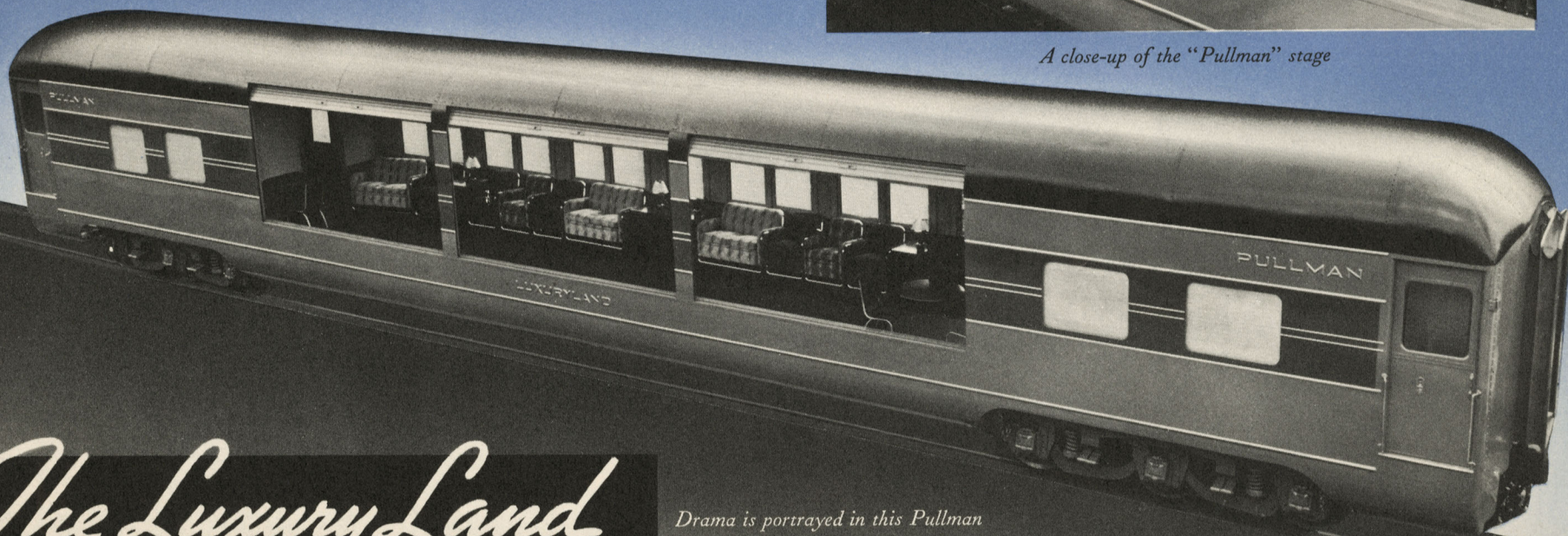


Plenty of opportunity to view the passing scenes

THE Pullman Company is also participating in the feature pageant, "Railroads on Parade," one of the popular attractions of the New York World's Fair. A Pullman car, especially remodeled for this pageant and renamed *Luxuryland*, is one of the highlights of this production. It displays the interior of a lounge car in which members of the cast present one of the scenes of the pageant. One side of the car has been removed to the extent of 42 feet to permit the presentation of this novelty in the setting of a modern Pullman car.



A close-up of the "Pullman" stage



The Luxury Land

Drama is portrayed in this Pullman

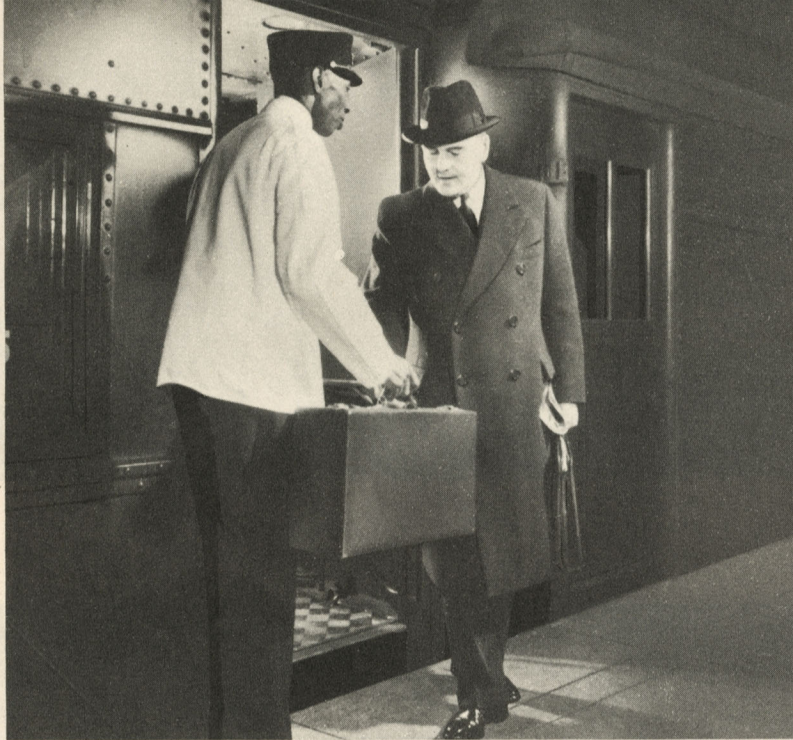
Pullman Service

GRACIOUS hospitality is the pattern of Pullman service. The ideal of hospitality is the art of making one's guests feel "at home," by doing everything possible to make them comfortable and happy. It is this art that constitutes an ingrained part of Pullman service. As you travel in a Pullman car, you will have the conveniences and comforts experienced in daily living to which you are accustomed at home, at your command. There are no mysteries surrounding the acceptance of Pullman service as a medium of travel, its services are available to all who seek or know the better way to go.

A VARIETY OF SERVICES

Pullman service is available throughout the United States and on lines in Canada and Mexico. Wherever you buy your railroad ticket, you will find it possible to obtain a Pullman ticket, or the ticket agent can arrange to reserve your space.





Passengers occupying any type of Pullman accommodation are afforded a variety of services. Pullman provides a splendidly equipped boudoir-dressing room for women travelers, and a well-appointed dressing room for men. A Pullman passenger on trains carrying a lounge car or observation car is entitled to the use of these cars, in standard service, and their luxurious equipment (comfortable sofas and chairs, tables, magazines, writing facilities) without any charge.

FOR YOUR CONVENIENCE

All types of Pullman accommodations are equipped with specially-designed slots into which a Pullman table can be securely fastened. If you wish, the porter will bring you one of these wide, sturdy tables, for writing, playing games, sewing, reading, and for the service of meals. On some trains the Porter will supply a list of drinks available (lemonade, orangeade, ginger ale and so forth), and these drinks will be served to you either on the table in your accommodation, or in the lounge or observation car. Cigarettes, candy, and playing cards may also be purchased through the porter on most trains. In every Pullman car is *The Hotel Red Book*, listing all hotels, with their types of service and their rates. Railroad folders, containing time tables, are also provided.

Telegrams may be sent and received while you are traveling. (The porter will supply telegram blanks, and will take care of the sending of your telegrams. If you expect a telegram en route, notify the Pullman conductor or porter, giving your name, car and accommodation numbers.) For passengers in sleeping cars, the porter will supply pillows for daytime travel-comfort. All Pullman cars are equipped with a first aid kit. Toilet articles and other travel requisites are available on some trains. All new cars equipped with facilities for the use of electric razors, and converters for the use of such razors are being installed in other cars as rapidly as

practical operating conditions will permit. All Pullman cars are equipped with a water cooler and individual drinking cups.

AIR CONDITIONING

The Pullman Company pioneered in the field of air-conditioning. The first-air-conditioned Pullman sleeping car was put into service September 9, 1929, and was the forerunner of more than 4,800 air-conditioned Pullman cars in service today. The air-conditioning system installed on Pullman cars functions throughout the year, and although its effects are most obvious in the summer time, it is likewise beneficial when the cooling system is not required.

THE YARDSTICK OF SAFETY

In all fields there are standards of performance, of strength, of accuracy. Some of these standards are embodied in precision measuring instruments. Some are embodied in the product of a single manufacturer—a yardstick by which all other similar products are appraised. In the manufacture of railway passenger cars, the standard of strength and safety is the Pullman car, which provides safe, comfortable, convenient travel quarters for an average of nearly 50 thousand railway passengers every day. The result of 80 years of progressive engineering, the Pullman car is one of the safest places in the world. This is due in part to Railroad standards of safety in operation and in part to Pullman standards of safety and strength in car construction—those maximum standards developed with present-type cars which builders of the new-type lightweight equipment strive to equal with their designs, but have in no case exceeded, and in many cases do not reach.

Despite rain, snow, heat or cold—its always fair weather when you travel by Pullman. Comfortable in person and in mind, the Pullman traveler can depend upon getting to his destination—and safely.



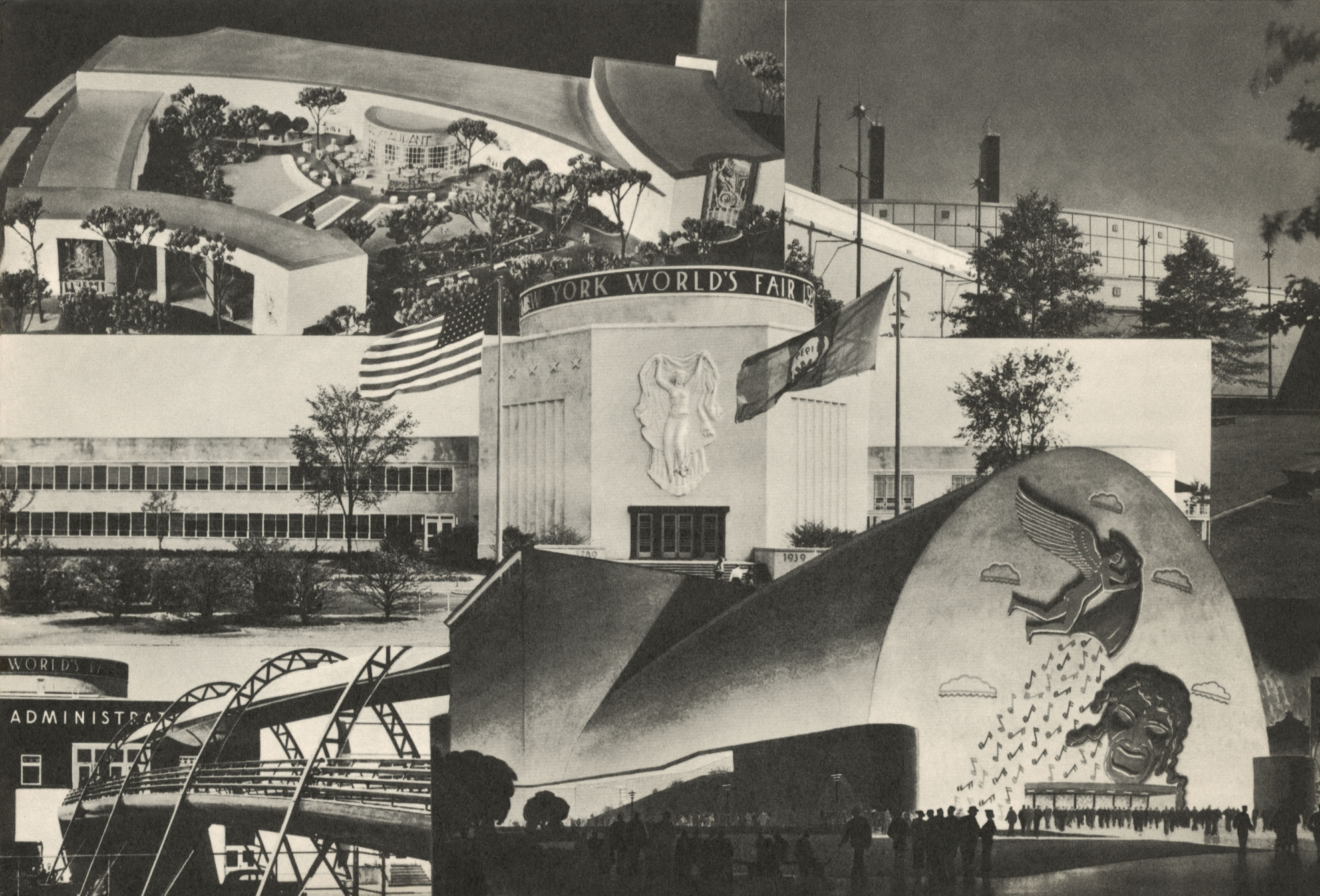
Typical Pullman Rates

ABOUT one-half of those who use Pullman cars during the course of a year travel between places where the lower berth rate is \$2.65 or less. A \$2.65 lower berth rate covers a typical overnight journey—about 300 miles. For longer trips, of course, the rates are correspondingly higher, but the ones quoted will give you an idea of the relatively low cost of Pullman service. The rates shown are Pullman charges only and do not include the cost of railroad transportation tickets. Your ticket agent or the Pullman Company will gladly quote rates on available accommodations for your next journey. Where Pullman “tourist” cars are operated, berth accommodations are available at rates approximately half of those charged between the same places in “standard” cars.

ON AN AVERAGE 300-MILE OVERNIGHT TRIP

Your Pullman accommodations would cost about:

Lower berth	\$2.65	Duplex Room for one	\$4.20
Upper berth	2.00	Bedroom for one, \$4.75; for two	5.25
Single Occupancy Section	3.55	Compartment for one, \$5.25; for two or more.	7.35
Roomette for one.	3.70	Drawing Room for one, \$6.60; for two or more.	9.45
		Master Room for one, \$7.90; for two or more.	11.55



NEW YORK WORLD'S FAIR 1939-1940

WORLD'S FAIR
ADMINISTRATION

1939

