

**Advantages of Pennsylvania
World's Fair Tours**

The all-expense plan will make it possible for you to determine just what your vacation will cost before leaving home.

All details will be arranged. You will see all the sights CONVENIENTLY, ECONOMICALLY—in comfort and with safety.

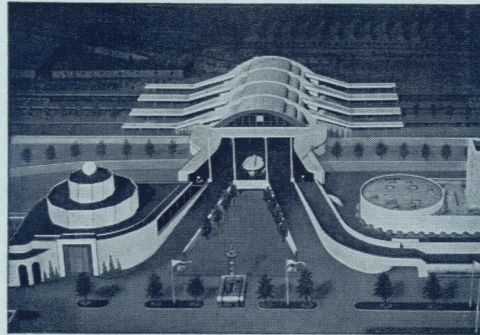
You will be definitely sure that your hotel room will be waiting on your arrival.

You will enjoy the speed, comfort and safety of rail travel.

An experienced tour conductor will accompany you for the round-trip to look after all details.

You will travel in modern air-conditioned coach equipment.

**Only 10 minutes from Pennsylvania Station direct to
World's Fair Station.**



**PENNSYLVANIA RAILROAD IS THE ONLY DIRECT ROUTE TO THE
WORLD'S FAIR**

Step off on the grounds without any long, tedious walk.

WE DESIRE TO PLEASE YOU!

We have planned your vacation carefully. Our long experience in directing successful tours is your assurance of an appealing, entirely satisfying vacation. All the elements of an enjoyable vacation: rest, fun, diversion and free time for individual adventuring have been mixed in the proper proportions. More value for your money is offered by these expertly-planned PENNSYLVANIA TOURS. Each one is much more economical than if the same trip is taken individually.

ENROLLMENT

A deposit of \$5.00 will be required with application for reservation, the balance to be paid to undersigned 5 days before date of tour. Arrangements shown in these itineraries are made by the sponsor in the capacity of agent only. The itineraries will be followed as closely as possible, but it sometimes becomes necessary to change the schedules and tours for the interest of the party. The management reserves the right to refuse enrollment in these tours without having to give reason for such refusal.

For further information, reservations, etc., consult your Tour Agent or address the undersigned.

MAKE THE TRIP YOU'VE DREAMED ABOUT

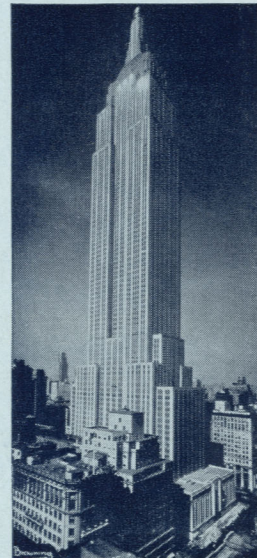
See . . .

NEW YORK CITY the largest city

in the land, boasts of having the tallest buildings, the most money . . . offering the greatest fun. Fifth Avenue and its fairland of shops, Millionaires Row, the Public Library, St. Patrick's Cathedral, Metropolitan Art Museum, Central Park, Grant's Tomb, Columbia University, Wall Street, Fashionable Riverside Drive, Broadway and the theatrical district, Greenwich Village, the Aquarium. All this and more we shall see on our sightseeing trip of Greater New York. There will be ample time for individual trips to Radio City, N.B.C. Broadcasting Studios, Rockefeller Center and the many other points of special interest. A visit to a large ocean liner will be interesting and educational. And New York is a place of restaurants. Nowhere else are there so many which are so good or so interesting. Food cooked and served in the native style of most of the countries in the world is to be found. And, too, prices are reasonable.



Radio City



Empire State Building

ATLANTIC CITY "The Playground

of the World." Atlantic City, located on an island sixty miles south of Philadelphia, on the Atlantic Ocean—headquarters for health, recreation and amusement—recognized by world travelers and vacationists as the leader of American seashore resorts. Promenade on the famous Boardwalk—seven miles long, ten to fifteen feet above the beach.

The stir of life on the Boardwalk, with its 2500 roller chairs, is perhaps the most magnetic single feature of Atlantic City. Colorful by day, sparkling by night under the brilliance of electric illumination, it interests its guests by the many individual, unusual sights. Quaint shops and bazaars, castle-like hotels, theatres, restaurants, line the Boardwalk on the land side. On the other side, five mammoth amusement piers reach out into the Atlantic Ocean, offering you a choice of entertainment and amusement.

tion, it interests its guests by the many individual, unusual sights. Quaint shops and bazaars, castle-like hotels, theatres, restaurants, line the Boardwalk on the land side. On the other side, five mammoth amusement piers reach out into the Atlantic Ocean, offering you a choice of entertainment and amusement.



WASHINGTON More than one hundred and forty

years ago George Washington, Thomas Jefferson and that romantic Frenchman, Pierre L'Enfant, planned it—and today its long, wide, tree-fringed avenues . . . Palaces of Government, of Science, of Arts . . . the glitter and pomp of great Embassies . . . world-famous galleries and museums . . . mirror that dream. The city is located at the confluence of the Potomac and Anacostia Rivers and embraces an area with a circumference of about fourteen miles.

It is a new Washington—a different Washington from the city of a few years ago. Its stately old buildings still stand, but new buildings—vast in size and classic in design—have been erected . . . new museums and libraries have been completed . . . new memorials have been dedicated. As a result, the Washington of today is more than ever before worthy of the phrase—"The City Beautiful."

Mighty Niagara



Peaceful Mount Vernon

NIAGARA FALLS View the majestic grandeur of

Niagara Falls, mighty spectacle of nature. Hear the thundering voice of Niagara that has awed Indian and white man for centuries, watch the flow of one hundred and twenty million gallons of water each minute rush over its brink.

PENNSYLVANIA RAILROAD *Offers*

TODAY'S GREATEST TOUR VALUES TO "THE WORLD OF TOMORROW"

Tour No. 1

NEW YORK WORLD'S FAIR 7 Days - \$63.50

LEAVE CHICAGO EVERY SATURDAY—MAY 20 TO OCTOBER 21

FIRST DAY—Saturdays
1:30 p.m., Central Time, 2:30 p.m., Chicago Time—Lv. Chicago Union Station on the Pennsylvania Railroad. Dinner in dining car.

SECOND DAY—Sundays
Breakfast in dining car.
7:55 a.m., EST—Ar. Pennsylvania Station, New York. Transfer from station to Park Central Hotel.
Gray Line motor coaches will take individuals for sightseeing trip of Greater New York: Fifth Avenue, with its shops, palaces, famous churches and synagogues, museums and colleges. Colorful "Harlem," miles of massive apartment houses on Washington Heights, Riverside Drive, Hudson River and the Palisades, Broadway and Great White Way, Washington Park, the Bowery, Chinatown, lower Broadway, Wall Street, the Ghetto and other foreign colonies. A view of New York Harbor and the Statue of Liberty from Battery Park. A visit within the Aquarium. Evening open.

THIRD DAY—Mondays
FOURTH DAY—Tuesdays
FIFTH DAY—Wednesdays
These three days have been left open for visits to the Fair grounds and individual activities. (2 souvenir tickets to World's Fair included.)

SIXTH DAY—Thursdays
Morning and early afternoon open.
3:10 p.m., EST—Party is transferred to Pennsylvania Station.
3:40 p.m., EST—Lv. New York on the Pennsylvania Railroad.
Dinner in dining car.

SEVENTH DAY—Fridays
Breakfast in dining car.
7:50 a.m., Central Time, 8:50 a.m., Chicago Time—Ar. Chicago Union Station.

Tour No. 3

NEW YORK WORLD'S FAIR 6 Days - \$57.00

LEAVE CHICAGO EVERY WEDNESDAY—MAY 24 TO OCTOBER 25

FIRST DAY—Wednesdays
1:30 p.m., Central Time, 2:30 p.m., Chicago Time—Lv. Chicago Union Station on the Pennsylvania Railroad. Dinner in dining car.

SECOND DAY—Thursdays
Breakfast in dining car.
7:55 a.m., EST—Ar. Pennsylvania Station, New York. Party is transferred to the Park Central Hotel.
Motor coaches take party for sightseeing tour of Greater New York . . . see Tour No. 1. Evening open.

THIRD DAY—Fridays
FOURTH DAY—Saturdays
These two days have been left open for visits to the Fair grounds and individual activities. (2 souvenir admission tickets to the Fair included.)

FIFTH DAY—Sundays
Morning and early afternoon open.
3:10 p.m., EST—Party is transferred to Pennsylvania Station.
3:40 p.m., EST—Lv. New York City on the Pennsylvania Railroad.
Dinner in dining car.

SIXTH DAY—Mondays
Breakfast in dining car.
7:50 a.m., Central Time, 8:50 a.m., Chicago Time—Ar. Chicago Union Station.

Tour No. 6

NEW YORK WORLD'S FAIR WASHINGTON, D. C. 7 Days - \$63.65

Same as Tour No. 3 until Sunday afternoon.

Sundays
12:00 Noon, EST—Party is transferred to Pennsylvania Station.
12:30 p.m., EST—Lv. New York City on the Pennsylvania Railroad.
4:30 p.m., EST—Ar. Washington, D. C. Party is transferred to the Willard Hotel. Evening open.

Mondays
10:00 a.m., EST—Blue & Gray Line motor coaches will take party for a trip through City of Washington, including Embassy and Legation sections of Washington, Rock Creek Park, Zoological Gardens, Old Georgetown, Fort Myer, Arlington National Cemetery, where we see Lee Mansion, Memorial Amphitheatre, and Tomb of the Unknown Soldier. Then on to Alexandria, passing new George Washington Memorial, visiting beautiful Mount Vernon, Washington's home. Returning, we visit Lincoln Memorial.
4:40 p.m., EST—Party is transferred from hotel to Union Station.
5:10 p.m., EST—Lv. Washington on the Pennsylvania Railroad's LIBERTY LIMITED. Dinner in dining car.

Tuesdays
Breakfast in dining car.
8:35 a.m., Central Time, 9:35 a.m., Chicago Time—Ar. Chicago Union Station.

COST OF PENNSYLVANIA RAILROAD TOURS INCLUDE

Round-trip rail transportation.
Individual seats in latest type all-steel, air-conditioned coaches.
All hotel accommodations (2 persons to a room with bath).
Complete sightseeing trips in New York City and Washington, D. C.
All meals (except while in New York City and Washington, D. C.).
Transfer of passengers and baggage at all points.
Guide, lecturer and admission fees.
Souvenir admission tickets to Fair.

Tour No. 2

NEW YORK WORLD'S FAIR 6 Days - \$57.00

LEAVE CHICAGO EVERY SUNDAY—MAY 21 TO OCTOBER 22

FIRST DAY—Sundays
1:30 p.m., Central Time, 2:30 p.m., Chicago Time—Lv. Chicago Union Station on the Pennsylvania Railroad. Dinner in dining car.

SECOND DAY—Mondays
Breakfast in dining car.
7:55 a.m., EST—Ar. Pennsylvania Station, New York. Party is transferred to the Park Central Hotel.
Sightseeing trip of Greater New York . . . see Tour No. 1. Evening open.

THIRD DAY—Tuesdays
FOURTH DAY—Wednesdays
These two days have been left open for visits to the Fair grounds and individual activities. (2 souvenir admission tickets to Fair included.)

FIFTH DAY—Thursdays
Morning and early afternoon open.
3:10 p.m., EST—Party is transferred to Pennsylvania Station.
3:40 p.m., EST—Lv. New York City on the Pennsylvania Railroad.
Dinner in dining car.

SIXTH DAY—Fridays
Breakfast in dining car.
7:50 a.m., Central Time, 8:50 a.m., Chicago Time—Ar. Chicago Union Station.

Tours No. 4 and No. 5 NEW YORK WORLD'S FAIR WASHINGTON, D. C.

Tour No. 4 - 8 Days - \$68.20

Tour No. 5 - 7 Days - \$63.65

Tour No. 4 is same as Tour No. 1 until Thursday afternoon.
Tour No. 5 is same as Tour No. 2 until Thursday afternoon.

Thursdays
12:00 noon, EST—Party is transferred to Pennsylvania Station.
12:30 p.m., EST—Lv. New York on the Pennsylvania Railroad.
4:30 p.m., EST—Ar. Washington. Party is transferred to the Willard Hotel. Evening open.

Fridays
10:00 a.m., EST—Blue & Gray Line motor coaches meet party for sightseeing trip of City of Washington, including Embassy and Legation sections, Rock Creek Park, Zoological Gardens, Old Georgetown, Fort Myer, Arlington National Cemetery, where we see Lee Mansion, Memorial Amphitheatre, and Tomb of the Unknown Soldier. Then on to Alexandria, passing new George Washington Memorial, visiting beautiful Mount Vernon, Washington's home. Returning, we visit Lincoln Memorial.
4:40 p.m., EST—Party is transferred from hotel to Union Station.
5:10 p.m., EST—Lv. Washington on the Pennsylvania Railroad's LIBERTY LIMITED. Dinner in dining car.

Saturdays
Breakfast in dining car.
8:35 a.m., Central Time, 9:35 a.m., Chicago Time—Ar. Chicago Union Station.

HISTORIC VIRGINIA EXTENSION

By adding \$16.00 to cost of tours Nos. 1, 2 and 3 you can enjoy an extension trip to Colonial Virginia at conclusion of stay in New York City.

We will visit NORFOLK, world port and naval center . . . founded in 1682; NEWPORT NEWS; WILLIAMSBURG, where Restoration Inc., sponsored by John D. Rockefeller, Jr., has accurately restored and preserved significant features of the American colonial period; JAMESTOWN, the first permanent English settlement in America, founded by Captain John Smith; YORKTOWN, where Lord Cornwallis surrendered to George Washington in 1781; and many other delightful places in historical colonial Virginia.

FIRST DAY
12:00 Noon, EST—Party is transferred to Pennsylvania Station.
12:30 p.m., EST—Lv. New York City on the Pennsylvania Railroad.
4:30 p.m., EST—Ar. Washington, D. C. Party is transferred to the docks of the Norfolk and Washington Steamboat Co.
6:30 p.m., EST—Lv. Washington for a delightful trip down the Potomac River, past Mount Vernon, into Chesapeake Bay and so to Norfolk. Dinner on boat—dancing—etc.

SECOND DAY
Breakfast on boat.
8:00 a.m., EST—Ar. Norfolk. Motor coaches meet party for trip through city of Norfolk, visiting Naval Airport, thence ferry across Hampton Roads to Newport News. Our tour takes us to Williamsburg, Jamestown, and Yorktown, returning to Old Point Comfort to inspect Old Fortress Monroe, first fortified in 1607. Reboard our steamer for the return to Washington. Luncheon will be obtained in Williamsburg—dinner on boat.

THIRD DAY
Breakfast on boat.
7:00 a.m., EST—Ar. Washington, D. C. Party will be transferred in taxicabs to the Union Station where baggage may be checked for the day.
10:00 a.m., EST—Party will leave from Blue & Gray Line Terminal, 1417 Pennsylvania Ave., N. W. for a trip through City of Washington, including Embassy and Legation sections of Washington, Rock Creek Park, Zoological Gardens, Old Georgetown, Fort Myer, Arlington National Cemetery, where we see Lee Mansion, Memorial Amphitheatre, and Tomb of the Unknown Soldier. Then on to Alexandria, passing new George Washington Memorial, visiting beautiful Mount Vernon, Washington's home. Returning, we visit Lincoln Memorial. At the conclusion of this trip—which will last about 4½ hours—the balance of the afternoon will be free for individual activities.
5:10 p.m., EST—Lv. Washington on the Pennsylvania Railroad's LIBERTY LIMITED. Dinner in dining car.

FOURTH DAY
Breakfast in dining car.
8:35 a.m., Central Time, 9:35 a.m., Chicago Time—Ar. Chicago Union Station.
Additional cost of Extension Tour includes: Round-trip steamer transportation—sightseeing as outlined, lecturers, admission fees, meals on the boat, at Williamsburg, Va., and transfers.

HAPPINESS TOURS *To the*

1939 NEW YORK WORLD'S FAIR and the HISTORIC EAST

PENNATLANTIC TOUR

8 Days—4 persons in room... \$68.50 2 persons in room... \$73.50
3 persons in room... 70.25 1 person in room... 81.50
Leaving Chicago every Saturday June 3 to September 23.

FIRST DAY—Saturday
3:10 p.m., Central Time, 4:10 p.m., Chicago Time—A-l-l A-b-o-a-r-d-l is heard echoing and re-echoing throughout the mammoth Union Station. A last farewell and a fond goodbye—with that delightful feeling of excitement we board the Liberty Limited, crack train of the Pennsylvania Railroad. Our tour conductor introduces us around and the car is soon a-buzz. We immediately sense that carefree spirit of camaraderie so evident on a Happiness Tour.

And what's this we hear? Can it be dinner time already? Yes, here's our smiling steward announcing "dinner is served." We go forward to an immaculate, comfortable, air-conditioned dining car, courteous service and delicious food from spotless linen, china and gleaming silver. After dinner, we are content to laze in our comfortable reclining chairs and watch the ever-changing scenery over northern Indiana and Ohio rushing by our windows.

SECOND DAY—Sunday
We have a leisurely breakfast in our shining diner as we are about bright and early because we do not want to miss a thing. We arrive in Washington at 8:50 a.m., in time for church. Today we are going by motor car to see cosmopolitan and beautiful Washington, including the Lincoln Memorial, then over Mt. Vernon Blvd., drive through Alexandria, passing Christ Church where Washington and Lee and other famous people worshipped, then to Mt. Vernon, Washington's home. At 1:00 p.m. we leave our country's capital bound for Atlantic City (Luncheon in dining car) going by way of the City of Brotherly Love, Philadelphia, which we pass through at 3:30 p.m. We arrive Atlantic City at 4:55 p.m. Atlantic City is situated on a sunny isle in the Atlantic Ocean, warmed by the Gulf Stream in winter—cooled by refreshing sea breezes in summer—joined to the mainland by means of three paved boulevards. The Jefferson Hotel is our home at the ocean end of Kentucky Avenue, in the heart of this millionaire's playground. Paralleling this colorful, cabana-dotted shoreline is the world-famous Boardwalk. Dancing, or a trip on the rollicking Roller Coaster and other ocean pier attractions will be on call for our evening before we decide we must have a little sleep before morning, and we retire to our cool rooms.

THIRD DAY—Monday
Morning finds us ready for another dip in the cool surf at our door, and we plan to do this morning all the things we missed yesterday afternoon along the Boardwalk. Luncheon is served in our hotel. All good things come to an end and mid-afternoon finds us on our way to New York and the awe-inspiring World's Fair.

We leave our train at the huge Pennsylvania Station and transfer directly to the Pennsylvania Hotel, where our rooms have been reserved, each with its private bath. If the size of our party exceeds the number of rooms reserved at the Pennsylvania Hotel, the McAlpin and Lincoln Hotels also will be used, taxicab transfers being arranged for your convenience.

FOURTH DAY—Tuesday
FIFTH DAY—Wednesday
SIXTH DAY—Thursday
IN NEW YORK CITY

These are yours. You are gloriously free to come and go, stay out early or late, take in the town and the World's Fair to your heart's content. Each of us has been given our two admission tickets to the World's Fair and another ticket for a trip through Upper and Lower New York by Gray Line Sight-seeing Co., covering all points of interest—a famous tour showing the financial, commercial and historic sections, lower Fifth Avenue, Washington Square, the Battery and Bowery, famous Tomb's Prison, City Hall and Municipal Buildings, Federal and State Buildings, Wall Street and the financial section, Lower Broadway, Old Custom House, where Washington took the oath of office, Fraunces Tavern, the Foreign sections, famous Fulton Fish Market, with a stop at Battery Park, a visit to the Aquarium, and view of New York's Harbor and the Statue of Liberty. Fifth Avenue and its world-famous shopping center, millionaire's row, St. Patrick's Cathedral, Metropolitan Museum of Art, Columbia University, Barnard College, the world-renowned Cathedral of St. John the Divine, Riverside Drive, view of the Palisades of the Hudson River, along the upper level of the double deck street, where we pass the docks of the big trans-Atlantic liners, Times Square and the Great White Way.

And still another ticket for the tour through the National Broadcasting Company's studio at Radio City, or the Observation Roof (70th floor) at Rockefeller Center.

Of course, we devote most of our time to the Fair, and we find that the best way to travel back and forth from our Hotel Pennsylvania is to depart from the Pennsylvania Station, where fast trains on the Long Island R.R. leave at 5-minute intervals, running time being only 10 minutes, with the fare 10 cents each way. If we are staying at the McAlpin or the Lincoln Hotel, it's only a couple of blocks away, so we're there in a jiffy.

SEVENTH DAY—Friday
We're up bright and early. We've seen so much, we've done so much, we've gotten our money's worth ten-fold already—but there's still more thrills, more adventure in store for us. We leave New York via the Lehigh Valley R.R. at 7:15 a.m., EST, bound for mighty Niagara Falls. We cross the rich, rolling farmlands of New Jersey, plunge into the "Switzerland of America" as we pass through the Alleghenies and then skirt the winding Susquehanna. We speed on through the changing landscape picture of the Finger Lakes region to reach our destination at 6:50 p.m., where we have comfortable rooms with private baths ready and waiting at the Niagara and Cataract Hotels. We have a daylight view upon arrival of awe-inspiring Niagara and another trip in special sightseeing cars for our remarkable trip by night. We see Majestic Niagara sparkling like a million jewels under the rays of a thousand multi-colored flood lights. A sight never-to-be-forgotten! We drive on past the enchanted whirlpool, the flashing Rapids, Table Rock and Brock Memorial. Tired, we seek our comfortable beds for the night.

EIGHTH DAY—Saturday
We have an early call today for we leave Niagara Falls at 6:10 a.m. EST; 7:10 a.m. Daylight Time, and we breakfast in our air-conditioned dining car, happy with our thoughts of a delightful trip. We are brimful of amusing incidents to tell our friends; overflowing with impressions that words fail to describe; abounding with a refreshing viewpoint, still dazzled by the glamor and excitement. A farewell chat across the luncheon table, that last good-bye and we arrive in Chicago at the Dearborn Station at Polk and Dearborn Streets at 3:15 p.m., Central Time, 4:15 p.m., Chicago Time.

COST OF PENNATLANTIC TOUR INCLUDES

Round-trip rail transportation—all meals (except while in New York)—guaranteed hotel rooms with private bath—sightseeing in Washington, New York and Niagara Falls—2 souvenir admission tickets to the World's Fair—ticket to Radio City or Rockefeller Center observation roof—all transfers—entertainment for the round-trip—tour conductor and host to add to the congeniality and good-fellowship enroute and to take care of every detail of your trip.

THE CAPITOL TOUR

8 Days—4 persons in room \$66.80 2 persons in room \$72.00
3 persons in room 68.50 1 person in room 81.00
Leaving Chicago every Sunday, June 4 to September 24.

FIRST DAY—Sunday
9:30 a.m., Central Time, 10:30 a.m., Chicago Time—Lv. Chicago from Dearborn Station via Grand Trunk Rwy. Luncheon in dining car.
9:00 p.m., EST—Ar. Niagara Falls, Canada. Motor coaches meet party for a trip to see Niagara Falls by night . . . illuminated by multi-colored flood lights.
Night will be spent at the Niagara and Cataract Hotels.

SECOND DAY—Monday
Breakfast at hotel.
9:00 a.m., EST—Lv. Niagara Falls via Lehigh Valley R.R. Luncheon in dining car.
6:30 p.m., EST—Ar. Pennsylvania Station, New York. Party transfers to Pennsylvania Hotel—connected with station by pedestrian subway.

THIRD DAY—Tuesday
FOURTH DAY—Wednesday
FIFTH DAY—Thursday
SIXTH DAY—Friday
These three days are spent in New York for visits to the Fair or individual activities.

8:15 a.m. EST—Lv. New York City on the Pennsylvania Railroad. Luncheon in dining car.
12:35 p.m., EST—Ar. Washington, D. C. Motor coaches meet party for sightseeing trip of the Nation's Capital, including: the Capitol, Bureau of Printing and Engraving, where the making of paper money and postage stamps will be seen, Congressional Library, the public rooms of the White House, the Pan-American Building, the U. S. Treasury, the Embassies of Foreign Nations, the Department of Justice and new Supreme Court Building. At conclusion of tour we check into one of Washington's most famous hotels, the Raleigh or the Hamilton. Dinner at hotel. Evening free.

SEVENTH DAY—Saturday
Breakfast at hotel. After breakfast motor coaches will take party for a trip to beautiful Mount Vernon, the home of George and Martha Washington. On the return we will stop at the Lincoln Memorial; Arlington National Cemetery to pay tribute at the Tomb of the Unknown Soldier. We will also see Custis-Lee Mansion, drive through Alexandria, passing Christ Church, where Washington and Lee and other famous people worshipped. We will be back at our hotel in time for luncheon. Early afternoon is open for individual activities.
4:30 p.m., EST—Party is transferred from hotel to the Union Station.

5:10 p.m., EST—Lv. Washington on the Pennsylvania Railroad's LIBERTY LIMITED. Dinner in dining car.

EIGHTH DAY—Sunday
Breakfast in dining car.
8:35 a.m., Central Time, 9:35 a.m., Chicago Time—Ar. Chicago Union Station.

COST OF CAPITOL TOUR INCLUDES

Round-trip rail transportation—all meals (except while in New York)—guaranteed hotel rooms with private bath—sightseeing in Washington, New York and Niagara Falls—2 souvenir admission tickets to the World's Fair—ticket to Radio City or Rockefeller Center observation roof—steamer ticket for ride around Manhattan Island or for the Hudson River trip to West Point and Newburgh—all transfers—entertainment for the round-trip—tour conductor and host to add to the congeniality and good-fellowship enroute and to take care of every detail of your trip.

Ask for complete descriptive folder

INDIVIDUAL ALL-EXPENSE TOURS IN NEW YORK CITY

Two to Seven Days—\$9.30 to \$52.35
For those who prefer to travel individually or whose plans will not allow them to take an all-expense conducted tour, arrangements have been made with the American Express Company to provide the all-important hotel accommodations while in New York, various sightseeing, and souvenir admission tickets to the World's Fair. By using this service you are assured the type and class hotel you want for as long as you care to stay. All reservations are made and confirmed before you leave. Avoid the uncertainty of knowing where you will stay in New York; know before you start what your trip will cost; take advantage of this reliable service offered by the American Express Company.

In New York Tours include:
Taxicab transfer from railroad terminal in New York to hotel.
Hotel accommodations.
Souvenir admission tickets to the World's Fair.
Grand Sightseeing Tour of New York by Gray Line Motor Coach.
Choice of tour of National Broadcasting Studios at Radio City or Admission to Rockefeller Center observation roof.
Taxicab transfer from hotel to railroad terminal in New York.

ADVANTAGES OF THESE WORLD'S FAIR SERVICES

- You enjoy the speed, comfort and safety of rail travel.
- You see New York and the World's Fair in a convenient and economical manner.
- With the details of your trip arranged in advance, you have more time to enjoy yourself while in New York.
- You are carefree in New York . . . you go as you please . . . stay at the hotel of your choice and enjoy these special services at your leisure.
- You are able to determine, even before leaving home, what the cost of your trip will be.
- Last and of the utmost importance, YOUR HOTEL ACCOMMODATIONS IN NEW YORK ARE ASSURED.

You can purchase these World's Fair services through your local railroad ticket agents or any Travel Agent, but reservations should be made five days prior to your departure for New York.

Ask for folder containing detailed information

OTHER TRAVEL BARGAINS OFFERED BY PENNSYLVANIA RAILROAD

"PLEASURE PLANNED" BERMUDA VACATION TOURS

12 Glorious Days \$143.90 in coaches } From Chicago
3 days and 2 nights in New York
5 days and 4 nights in Bermuda
4 days at sea

Cost includes: Transportation from Chicago to New York in air-conditioned comfort. Double room with bath at Hotel Pennsylvania in New York and at Hotel St. George in Bermuda. Room with bath aboard Furness steamer both ways between New York and Bermuda. All meals on steamer and in Bermuda. Government taxes and meals in United States extra.

GREAT SMOKY MOUNTAINS NATIONAL PARK TOURS

6 days \$65.50 up 8 days \$85.50 up
Leaving Chicago—April 22, May 13-27, and every Saturday thereafter until September 2, also on September 2-16-30, and October 14.

SWEDISH PILGRIMAGE TO THE 1939 NEW YORK WORLD'S FAIR AND WASHINGTON, D. C. THE NATION'S CAPITAL
Leaving Chicago June 22, 1939.
8 days—as low as \$65.25.

Ask for Descriptive Folders

The experience of yesterday and the tools of today have been used to create

“THE WORLD OF TOMORROW”

THE 1939 NEW YORK WORLD'S FAIR

Mightiest Spectacle of its Kind Ever Presented

A \$150,000,000.00 SHOW The New York World's Fair represents the expenditure of \$150,000,000.00 by the Exposition, Federal Government, State of New York and other states, foreign countries, industrial exhibitors and concessionaires.

To adequately describe this mammoth spectacle is impossible. But in these pages we will give you a pre-view of the varied and interesting sights you will see.



Riders of the Elements



©NYWFF



Theme Center

The dominant architectural feature of the Fair will be the Theme Center, a white sphere 200 feet high poised on a cluster of fountains, flanked by a slender 700 foot triangular shaft. To describe these new buildings new words are used . . . The PERISPHERE and TRYLON. The theme exhibit will be housed in the Perisphere which rises eighteen stories above the Fair grounds . . . it will portray a perfectly complete garden city of tomorrow. The majestic Trylon will serve as the Fair beacon. Spectacular illumination of the Perisphere has been devised by Fair engineers who have created lighting effects never before accomplished.

Railroad Building



©NYWFF

Constitution Mall

\$60,000,000.00 will be spent on this one street and its adjoining buildings. It extends from the Theme Center to the Lagoon of the Nations . . . a distance of 2,500 feet. Here, against an attractive background of water, light and landscaping effects, will be assembled much of the Fair's most important sculpture. The broad avenue will be lined by a series of imposing buildings, each brilliantly decorated by the works of famous mural artists.

A Zone for Each Phase of Modern Life

The Fair has been divided into zones . . . one for each significant phase of modern life. These zones will radiate from and be dominated by the Theme Center. The zones are: Government; Production; Distribution; Transportation; Communication; Business Administration; Shelter; Clothing and Cosmetics; Food; Health; Public Welfare; Education; Recreation; Arts; Religion. This development of exhibit zones will enable the visitor to see the Fair with a maximum of profit and enjoyment with a minimum of fatigue.

Private Exhibitors

Over \$35,000,000.00 has been spent by industrial exhibitors. Every industry will be represented. To house the exhibits forty-four buildings have been constructed by private exhibitors and the Fair has provided twenty additional exhibit halls.

33 States . . . 1 Territory . . . are represented

Thirty-Three American commonwealths and one territory, Puerto Rico, have appropriated millions of dollars to exhibit at the New York World's Fair. New York, the hostess state, leads all commonwealths with an appropriation of \$2,400,000.00 for a permanent marine amphitheatre and state exhibit.

62 Foreign Nations Exhibit

The exhibits of the 62 foreign nations represent a total outlay of \$25,000,000.00. Major industries . . . customs . . . dress peculiar to each nation represented will be portrayed in their native settings in separate buildings provided by their governments. Many of these exhibits will house restaurants specializing in native dishes.

Federal Government Exhibit

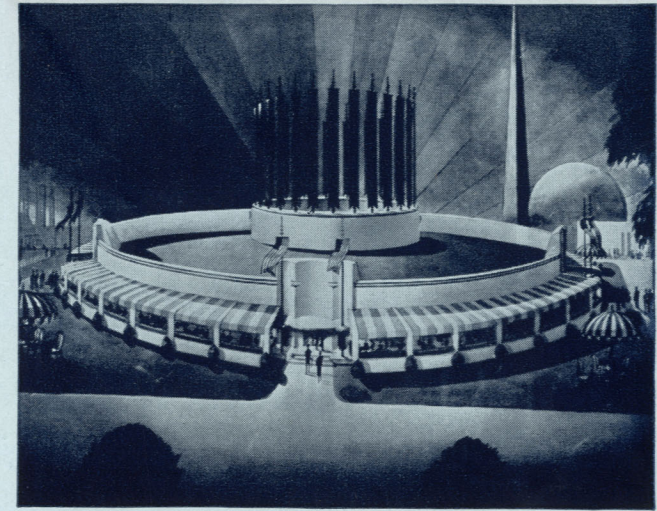
The Government of the United States has authorized an expenditure of \$3,000,000.00 for its exhibit, which will show the important part the various government departments play in the every day life of each citizen.

Music

Every type of music will be presented to the music lover: opera, symphony, choral, religious, light opera, ballet, as well as folk music and dance music. World famous stars and directors will perform. The majority of the musical performances are planned to take place in the Fair's Music Building, which is air-conditioned and built along modern lines. The vision from each of its 2500 seats is perfect, and the acoustical arrangements have been devised by the greatest technical experts.

American Art

The most comprehensive of contemporary American art ever assembled will be part of the New York World's Fair 1939. It will consist of the work of living American artists in the fields of painting, sculpture and the graphic arts. It is expected about 800 original works in the various media will be included in the exhibition. The exhibition will be held in the Contemporary Arts Building.



©NYWFF

Casino of Nations

Children's World

The little folks have not been forgotten. A complete world for children will occupy five acres between the main exhibit section and the amusement center. Here will be found not only everything to amuse and entertain the child, but educational and cultural influences which will interest the parent as well. Registered nurses and trained dieticians will be on hand to supervise your child's welfare.

Amusement Center

The largest variety of amusements ever to be gathered in one area will be presented at the Amusement Center. New rides . . . new shows . . . new spectacles will delight the most discriminating seeker for pleasure.

A Show for Everyone

All in all, the New York World's Fair is a show for everyone. There is such a variety of things to see . . . such a variety of things to do . . . that all who attend will come away well-pleased.

Spirit of the Wheel



©NYWFF