

PENNSYLVANIA RAILROAD



**THE DIRECT ROUTE
TO THE NEW YORK
WORLD'S FAIR**

Shortest Route
between West and East
Heaviest Rail, Finest
Roadbed in America

YOU CAN SLEEP *restfully*

ISSUED APRIL 2, 1939

PENNSYLVANIA RAILROAD



**THE DIRECT ROUTE
TO THE NEW YORK
WORLD'S FAIR**

Shortest Route
between West and East
Heaviest Rail, Finest
Roadbed in America

YOU CAN SLEEP *restfully*

ISSUED APRIL 2, 1939

GO *West* THIS YEAR

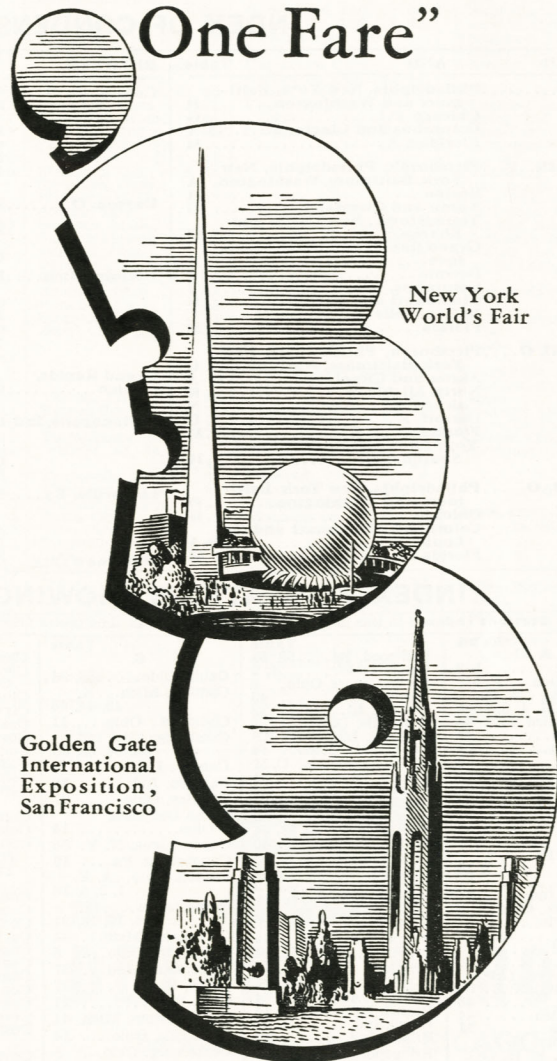
GOLDEN GATE INTERNATIONAL
EXPOSITION — SAN FRANCISCO



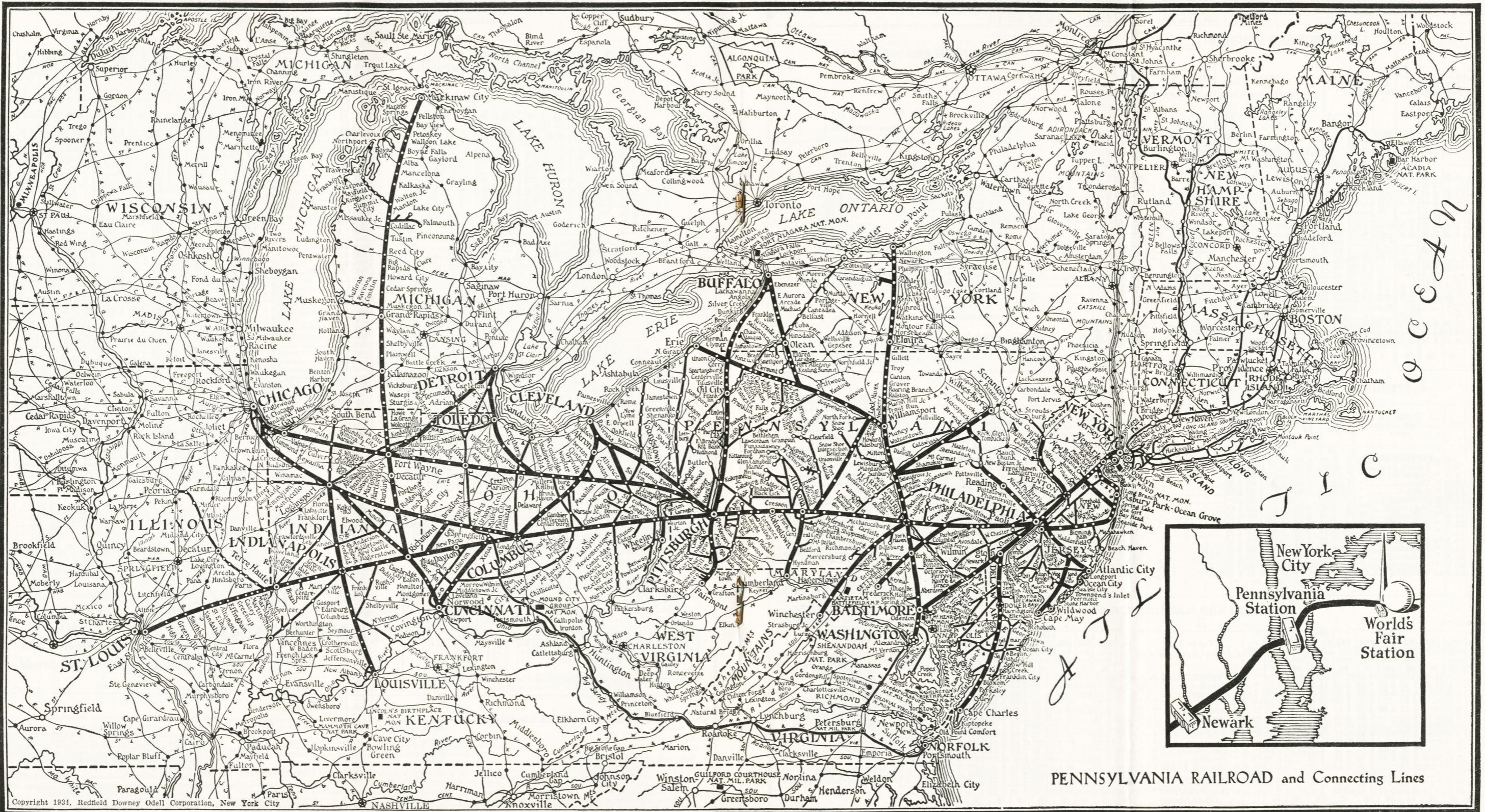
Pennsylvania
Railroad and con-
necting services
provide the ideal way to visit
this great Pageant of the Pacific.



See "Two Fairs for One Fare"



Grand Circle Tours to both the New York World's Fair and the Golden Gate International Exposition at San Francisco from any point in the United States and return — \$90 coach fare, \$135 rail fare in Pullmans. Special Pullman fares, lower berth (for 1 or 2) only \$45 for the round trip. On sale April 28 to October 28, good for 60 days from date of sale.

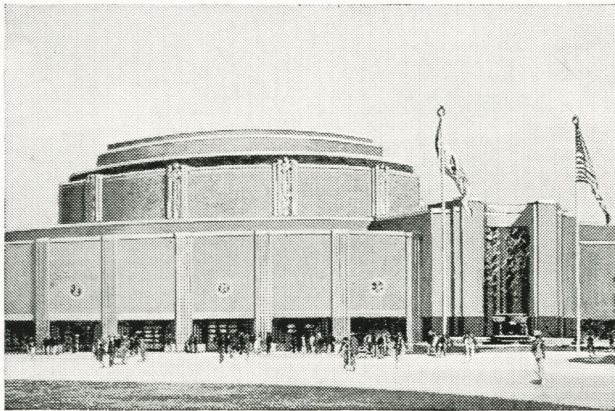


Copyright 1934, Redfield Downey Odell Corporation, New York City

PENNSYLVANIA RAILROAD and Connecting Lines

PENNSYLVANIA STATION, NEW YORK — AMERICA'S GATEWAY TO NEW YORK WORLD'S FAIR — 10 MINUTES — 10 CENTS BY TRAIN TO STATION ON GROUNDS!

See
RAILROADS at the
New York World's Fair

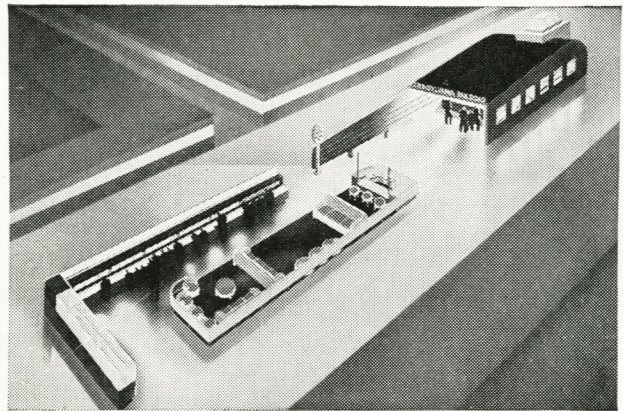


© N.Y.W.F.

*17-Acre Exhibit Sponsored
by 27 Eastern Railroads*

Never before has there been such a revue of the romance of railroading as this gigantic exhibition. A fascinating display . . . scale models of railroads in full operation . . . colorful pageantry records the history of transportation . . . the **BIG ENGINE**, the world's largest steam locomotive runs at full speed . . . exhibits of actual locomotives and cars, including America's most modern equipment . . . England's famous *Coronation Scot* . . . a complete Italian all-electric train, as well as equipment from other parts of the world. Don't miss it!

Visit the
Pennsylvania Railroad
EXHIBIT

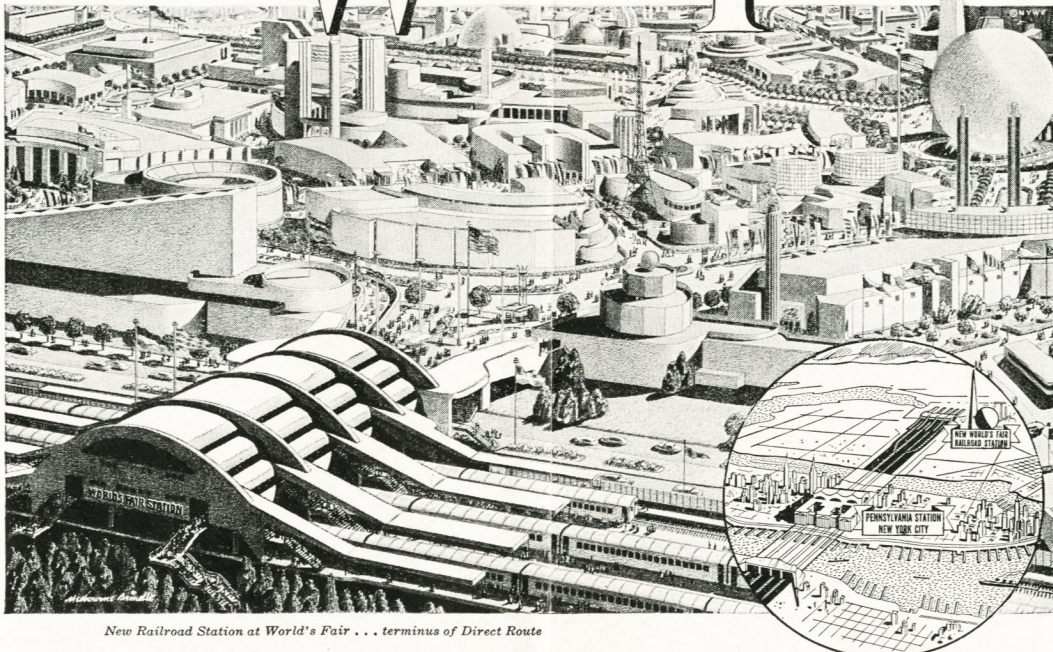


*Golden Gate International
Exposition, San Francisco*

Created by that eminent industrial designer, Raymond Loewy, the Pennsylvania Railroad Exhibit occupies a spacious area in Vacationland Building 1. It is a display vivid with color and movement. Signal lights flash . . . scale models of passenger and freight trains move . . . whistles sound . . . locomotives puff . . . there's *action!* Movies show graphically the march of modern rail progress. Yet there's repose, too. Luxurious divans and gaily colored easy chairs invite you to rest and relax awhile in your rounds of this fascinating Pageant of the Pacific.

....How are you
planning to go to the
NEW YORK

WORLD'S FAIR ?



New Railroad Station at World's Fair . . . terminus of Direct Route

Pennsylvania Railroad is the Direct Route

...STATION ON FAIR GROUNDS!

That news ought to settle one question—*quick*. How to go. For who'd dream now of driving the family car through New York's dense traffic—and hunting for a place to park among its skyscrapers?

Particularly when it costs so little to go by *The Direct Route*. So abandon all thought of the car. Be free of responsibility. Go direct...*right to the Grounds!*

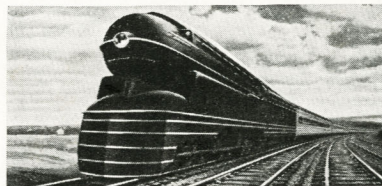
For your travel comfort from west or south, the largest fleet of air-conditioned trains in the world, carrying both coaches and Pullmans. Go in the very

style of Tomorrow, if you wish — the *Fleet of Modernism*. *Broadway Limited* (all-room train) and *The General*, Chicago — New York; "*Spirit of St. Louis*", St. Louis—New York; *Liberty Limited* from Chicago, via Washington. A trip climaxed by a smooth run over the greatest electrified mileage in America—Harrisburg east, Washington north.

So, no matter where you live, plan to go *Direct*. Consult your local Railroad Ticket Office. We can even arrange hotel accommodations for you!

Special Low Fares!

THE DIRECT ROUTE... Trains enter Pennsylvania Station, N.Y., where you board waiting train to World's Fair on Long Island... 10 minutes, 10 cents.



BIG ENGINE—most powerful steam passenger locomotive—see it at the World's Fair. And see trains of other nations and Pageant of Transportation.



TAKE IN WASHINGTON and historic Philadelphia en route. No extra cost for passengers from west of the Pittsburgh area. Take in Atlantic City too—only \$2 more in coaches; \$3 in Pullmans.