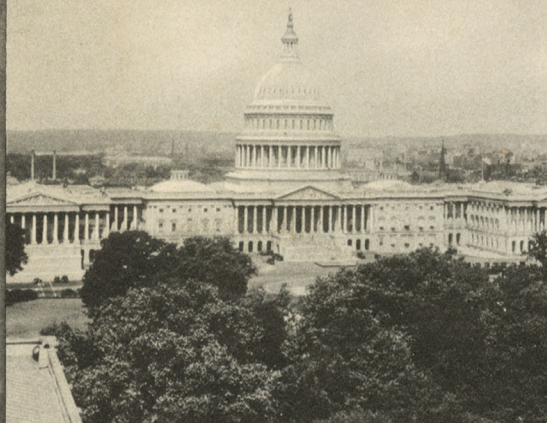


The Capitol,
Washington, D. C.



Atlantic City,
the World's Playground



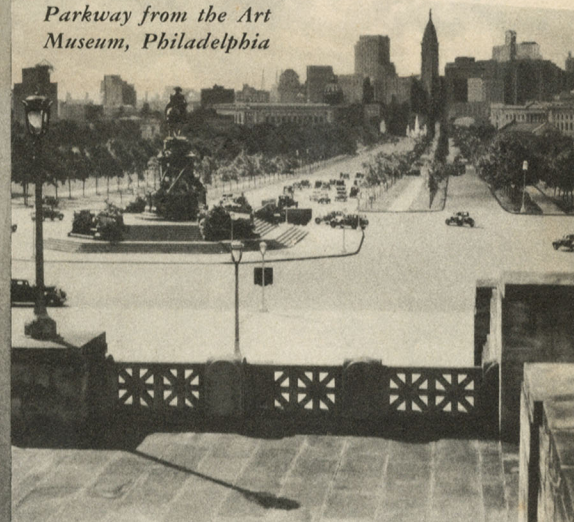
Increase the enjoyment of
your World's Fair trip by a
visit to these famous places

Going or returning, you can
stop off at Washington, the
Nation's Capital, or Philadel-
phia, the Cradle of Liberty.
Tickets to New York are ac-
cepted via Washington at no
added cost from points West
of the Pittsburgh area and
from points in the South and
Southwest.

Long Island Rail Road will take
you anywhere on Long Island
safely, quickly, cheaply because
it blankets this famous sea-
encircled playground with a
network of service.

To Atlantic City and the other
famous New Jersey resorts
Pennsylvania Railroad provides
direct rail service.

Parkway from the Art
Museum, Philadelphia



Montauk Light,
Long Island



The Pennsylvania Railroad representatives will be glad to help you plan your World's Fair trip... just call

	Telephone
Akron, Ohio.....	W. W. Clark, District Passenger Agent..... BBlackstone 5111
<i>Pennsylvania R. R. Freight Station, Mill and Summit Streets.</i>	
Atlanta, Ga.....	L. F. Jacobs, District Passenger Agent..... WALnut 4333
<i>913 Healey Building, 57 Forsyth Street.</i>	
Atlantic City, N. J.....	T. F. Curley, District Passenger Agent..... 4-0111
<i>Pennsylvania-Reading Seashore Lines Station, Arkansas and Arctic Avenues.</i>	
Baltimore, Md.....	Ira B. Yeakle, Division Passenger Agent..... PLaza 5430
<i>Baltimore Trust Building, Baltimore and Light Streets.</i>	
Birmingham, Ala.....	H. E. Cain, District Passenger Agent..... 7-4523
<i>1018 Watts Building, 2008 Third Avenue, N.</i>	
Boston, Mass.....	R. H. Clare, N. E. Passenger Agent..... HUBbard 1144
<i>Chamber of Commerce Building, 80 Federal Street.</i>	
Buffalo, N. Y.....	T. M. Goldsborough, Division Pass. Agt..... CLeveland 5820
<i>916 Liberty Bank Building, Main and Court Streets.</i>	
Chicago, Ill.....	R. C. Caldwell, Division Passenger Agent..... CENTral 7200
<i>1027 American National Bank Building, 33 North La Salle Street.</i>	
Cincinnati, Ohio.....	C. M. Trueb, Division Passenger Agent..... MAIn 3700
<i>106 Dixie Terminal Building, 4th and Walnut Streets.</i>	
Cleveland, Ohio.....	I. W. Adelhelm, Division Passenger Agent..... ENdlicott 2121
<i>Union Commerce Building, 1108 Chester Avenue.</i>	
Columbus, Ohio.....	H. B. Burchinal, Division Passenger Agent..... MAIn 1121
<i>Lawman Building, 26 South 3rd Street.</i>	
Dallas, Texas.....	R. W. Culmer, District Passenger Agent..... 2-9303
<i>1307 Southwestern Life Building, 1506 Main Street.</i>	
Dayton, Ohio.....	S. H. Reaney, District Passenger Agent..... ADams 6161
<i>Van Cleve Hotel, 38 W. First Street.</i>	
Denver, Colo.....	E. F. Cowperthwaite, District Passenger Agent..... MAIn 4197
<i>921 United States National Bank Building, 1817-17th Street.</i>	
Des Moines, Iowa.....	J. G. Reese, Traveling Passenger Agent..... 4-3279
<i>624 Fleming Building, 6th and Walnut Streets.</i>	
Detroit, Mich.....	E. M. Presley, Division Passenger Agent..... CADillac 0900
<i>Book-Cadillac Hotel, 223 Michigan Avenue.</i>	
Fort Wayne, Ind.....	W. R. Hall, Traveling Passenger Agent..... ANthony 6322
<i>Pennsylvania Station, Baker and Harrison Streets.</i>	
Grand Rapids, Mich.....	A. E. Butin, Traveling Passenger Agent..... 8-1161
<i>Pennsylvania Building, Tonia Avenue and Weston Street.</i>	
Harrisburg, Pa.....	N. S. Longaker, Division Passenger Agent..... BELL 2-4141
<i>Pennsylvania Station, 35 Grace Street.</i>	
Houston, Texas.....	H. E. Weaver, District Passenger Agent..... PREston 4774
<i>321 Shell Building, 607 Fannin Street.</i>	
Indianapolis, Ind.....	Homes Bannard, Division Passenger Agent..... RILEy 9331
<i>211 Guaranty Building, 20 North Meridian Street.</i>	
Jacksonville, Fla.....	H. A. Weiss, District Passenger Agent..... 5-3626
<i>409-10 Barnett National Bank Building, Adams and Laura Streets.</i>	
Kansas City, Mo.....	D. B. Steeg, District Passenger Agent..... VICTor 0935
<i>202-204 Railroad Ticket Office Building, 1025 Grand Avenue.</i>	
Los Angeles, Calif.....	Frederick Webb, District Passenger Agent..... TRInity 4688
<i>318 Van Nuys Building, 210 West 7th Street.</i>	
Louisville, Ky.....	L. G. Russell, District Passenger Agent..... JACKson 2351
<i>112 Starks Building Arcade, 4th and Walnut Streets.</i>	
Memphis, Tenn.....	J. G. Hammond, District Passenger Agent..... 8-3035
<i>424-26 Memphis Cotton Exchange Building, 67-69 Union Avenue.</i>	
Mexico City, Mexico.....	Alfonso Molinar, General Mexican Agent..... ERicsson 2-33-08
<i>Calle de Bolívar 22.</i>	

	Telephone
Miami, Fla.....	George R. Vierbuchen, Passenger Representative..... 3-3760
<i>Ingraham Building, 215 S. E. First Street.</i>	
Milwaukee, Wis.....	J. A. Oliver, District Passenger Agent..... DALy 4850
<i>1410 First Wisconsin National Bank Building, 735 North Water Street.</i>	
Minneapolis, Minn.....	A. C. Sigelen, District Passenger Agent..... ATLantic 5367
<i>813-15 Metropolitan Life Building, 125 South 3rd Street.</i>	
Newark, N. J.....	I. W. MacMullin, District Passenger Agent..... MARKET 2-4000
<i>National Newark Building, 10 Commerce Street.</i>	
New Haven, Conn.....	L. A. Williams, District Passenger Agent..... 7-4222
<i>Powell Building, 157 Church Street.</i>	
New Orleans, La.....	G. H. Fryler, District Passenger Agent..... RAYmond 0913
<i>1237 Canal Bank Building, 210 Baronne Street.</i>	
New York, N. Y.....	J. V. Sowers, Division Passenger Agt..... PENnsylvania 6-6000
<i>Pennsylvania Station, 390 Seventh Avenue.</i>	
Norfolk, Va.....	W. K. Jarvis, District Passenger Agent..... 24609
<i>Royster Building, Granby Street and City Hall Avenue.</i>	
Omaha, Neb.....	M. B. Winn, District Passenger Agent..... ATLantic 9427
<i>1219-22 City National Bank Building, S. E. Corner 16th and Harney Streets.</i>	
Philadelphia, Pa.....	D. M. Becker, Division Passenger Agent..... SPRuce 4000
<i>609 Broad Street Station, Broad and Market Streets.</i>	
Phoenix, Ariz.....	T. A. Metzger, District Passenger Agent..... 4-1514
<i>601 Security Building, 234 North Central Avenue.</i>	
Pittsburgh, Pa.....	L. F. Entrikin, Division Passenger Agent..... GRant 6000
<i>710 Pennsylvania Station, Liberty Avenue and Grant Street.</i>	
Portland, Ore.....	E. W. Mosher, District Passenger Agent..... BEAcon 4081
<i>315 Pacific Building, 520 S. W. Yamhill Street.</i>	
St. Louis, Mo.....	R. M. Harvey, Division Passenger Agent..... MAIn 3200
<i>1006 Syndicate Trust Building, 915 Olive Street.</i>	
St. Paul, Minn.....	L. B. Poore, District Passenger Agent..... CEDar 1727
<i>801 Pioneer Building, 4th and Robert Streets.</i>	
San Antonio, Texas.....	R. E. Cook, Traveling Passenger Agent..... Fannin 8021
<i>714-716 Majestic Building, 212 East Houston Street.</i>	
San Francisco, Calif.....	M. F. Van Horn, District Passenger Agent..... SUTter 1942
<i>507 Monadnock Building, 681 Market Street.</i>	
Seattle, Wash.....	E. C. Kellogg, District Passenger Agent..... ELlott 8590
<i>3302 White Building, 1338 Fourth Avenue.</i>	
Toledo, Ohio.....	W. Boes, Traveling Passenger Agent..... ADams 5181
<i>Commodore Perry Hotel, 145 Superior Street.</i>	
Toronto, Ont.....	H. E. Heal, Canadian Passenger Agent..... ELgin 7220
<i>606 Canadian Pacific Building, 69 Yonge Street.</i>	
Tulsa, Okla.....	W. L. Wright, Jr., District Passenger Agent..... 3-2662
<i>409 National Bank of Tulsa Building, 309 S. Boston Avenue.</i>	
Washington, D. C.....	H. A. Karr, Division Passenger Agent..... DISTRICT 1424
<i>626 Fourteenth Street, N. W.</i>	
Wilmington, Del.....	W. N. Pippin, District Passenger Agent..... 7241
<i>Delaware Trust Building, 914 Market Street.</i>	

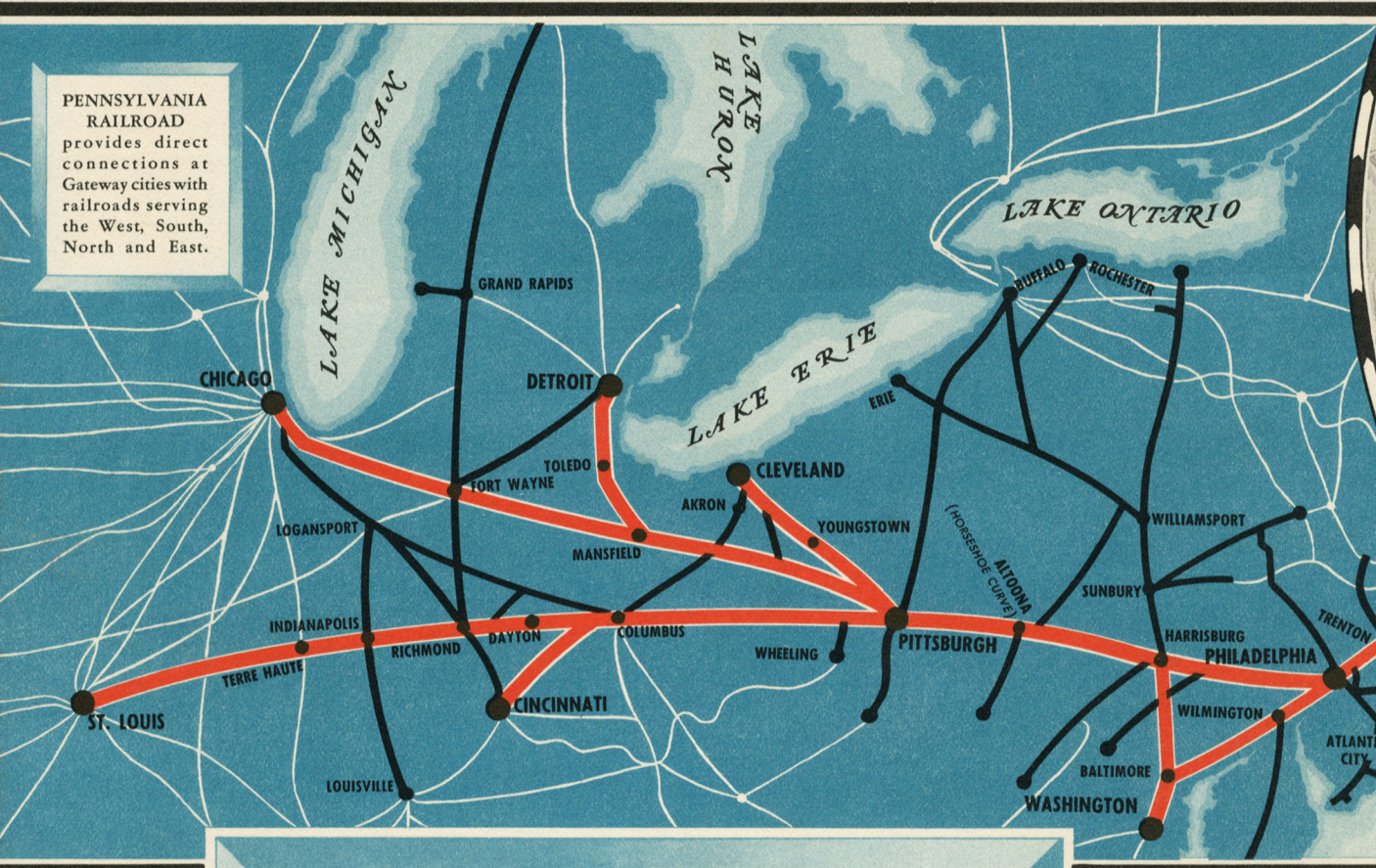
C. E. McCullough, Gen. Pass. Agent, Union Station, Chicago, Ill.
 F. McD. Quinn, Gen. Pass. Agent, Broad St. Station, Philadelphia, Pa.
 R. M. Flocker, Gen. Pass. Agt., Pennsylvania Station, Pittsburgh, Pa.
 A. H. Shaw, Gen. Pass. Agent, Pennsylvania Station, New York, N. Y.

What's the
MOST DIRECT WAY to the
NEW YORK WORLD'S FAIR
 1939

PENNSYLVANIA RAILROAD...the most direct route with station on the Fair Grounds

There'll be no confusion when you reach New York if you go by Pennsylvania Railroad. From the centrally located Pennsylvania Station run the only railroad trains direct to the World's Fair Station on the Fair Grounds... just a 10-minute run... and a train every few minutes during all hours the Fair is open. Just step from one platform to another to your World's Fair train right in Pennsylvania Station! Your trip to New York, too, will be a

further joy in one of the Pennsylvania Railroad's many air-conditioned flyers with their attractive, reasonably priced dining car meals. Coach as well as Pullman passengers share the cool delight, the peaceful quiet, the clean comfort of the regularly assigned through cars on the "largest fleet of air-conditioned trains in the world" with which the Pennsylvania Railroad and its connections tie West with East, and South with North.



PENNSYLVANIA RAILROAD provides direct connections at Gateway cities with railroads serving the West, South, North and East.



Map of New York City and Metropolitan Area Convenient service from Pennsylvania Station to the new World's Fair Railroad Station... 10 minutes, 10 cents

ATTRACTIVE RAIL FARES

Tickets at attractive fares, will be available to passengers bound for the World's Fair. All-Expense Plan Tours including round-trip transportation, Coach or Pullman, hotel accommodations, meals and sightseeing trips will enable anyone to visit New York and its great World's Fair at minimum expense.

Tickets to New York are accepted via Washington, D.C., at no added cost from points west of the Pittsburgh area and from points in the South and Southwest.

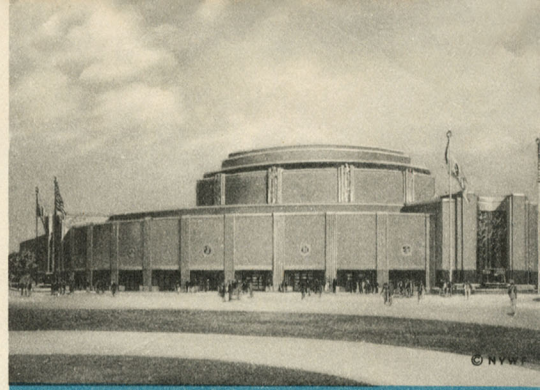
ELECTRIFIED MILEAGE—Another tremendous advantage you will enjoy when you go by Pennsylvania is electric operation of all trains from Harrisburg, Pa., or Washington, D. C., to New York and the Fair grounds. From these points to New York your train speeds behind powerful streamlined electric locomotives.

A FLEET OF MODERNISM—Scores of trains arrive daily at Pennsylvania Station, New York, bringing passengers from all parts of America. Among these trains are the crack new flyers which form the Pennsylvania's Fleet of Modernism. These smart trains provide accommo-

ditions as new and modern as anything you will see at the Fair. From Chicago the all-room *Broadway Limited* and *The General* direct to New York (or the *Liberty Limited* if you go via Washington); from St. Louis—"Spirit of St. Louis." This "fleet within a fleet," offers more types of private accommodations than ever before. Real home-like beds... your own individual toilet and washing facilities. Dining, lounge and observation cars styled in the mode and manner of tomorrow. Further, *The General*, *Liberty Limited* and "Spirit of St. Louis" carry through P. R. R. Luxury Coaches.

PENNSYLVANIA RAILROAD

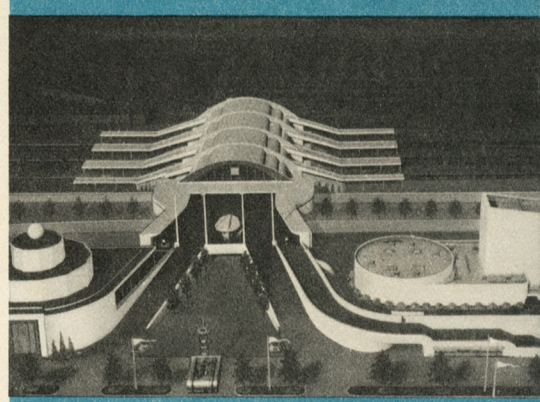
SHORTEST ROUTE BETWEEN EAST AND WEST... HEAVIEST RAIL, FINEST ROADBED IN AMERICA... YOU CAN SLEEP *restfully*



THE RAILROAD TRANSPORTATION BUILDING. With nine entrances similar to those of a round-house this huge circular structure will house a fascinating variety of rail exhibits... including the BIG ENGINE, largest, fastest, most powerful steam passenger locomotive in the world.



PENNSYLVANIA STATION, NEW YORK. Not only the Gateway to the World's Fair but the largest railroad terminal in New York. Convenient to Radio City, Fifth Avenue shops, Broadway, hotels and all points of interest in the great metropolis.



WORLD'S FAIR STATION of the Long Island Rail Road. The trains which whisk you to this convenient entrance to the Fair depart every few minutes from Pennsylvania Station. Step off on the grounds without any long, tedious walk.



GREATEST WORLD'S FAIR in history! It cost three times more than any previous exposition (\$150,000,000)... occupies a much greater area (1200 acres)... with 62 nations participating. Truly a pre-view of the World of Tomorrow! General admission 75 cents.