

THE men of the rail out on the old main line of the Rock Island Railroad offer this Caboose-Office as a part of our contribution to the progress of Rail Transportation, and as just one example of the service we are happy to give you when you use our rails.



JIM BULLARD
Conductor and chairman of train
crews business committee
Eldon, Mo.
30 years on the St. Louis Division

*Glad you called
Good luck to you as
You go and we invite
You to buy your
Tickets and route
Your freight over
The road of unusual
Service, our
Rock Island Lines*

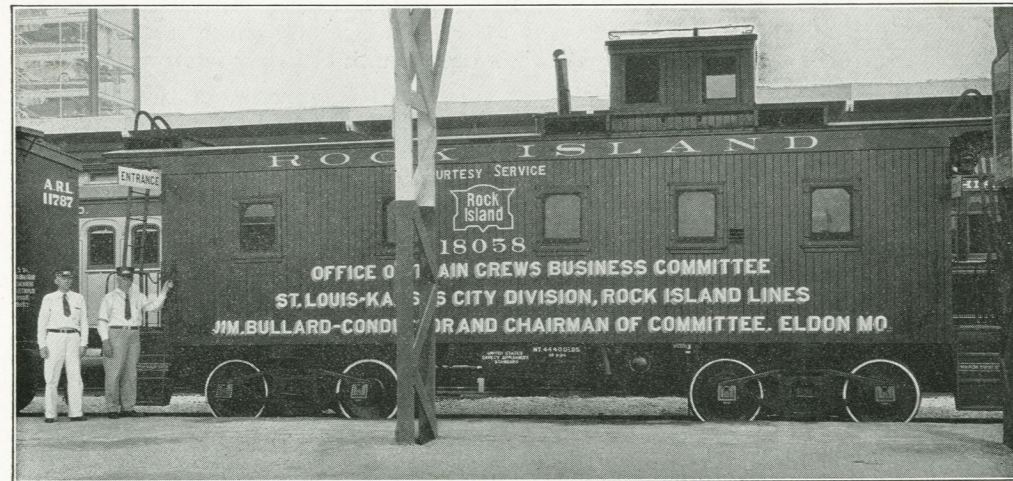
*Yours on
The Main Line*



JOHNNY MORROW
Assistant to chairman
and a
Hustling Freight Brakeman



Your Souvenir of Rock Island Caboose—Office 18058
CENTURY OF PROGRESS, CHICAGO 1934



The First Caboose-Office in the U. S. A. built in November 1904—this Caboose and Business Office on wheels has made over One Million Three Hundred Thousand Miles on the Rock Island cinder strewn trail of steel between old St. Louis and Kansas City.



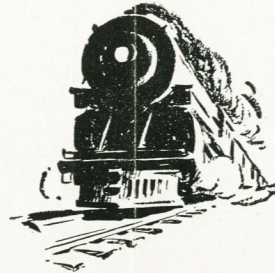
Our Committee and our Office

CABOOSE Office 18058 is likely the most unique unit of freight equipment in the railroad world of this day and age.

November 6th, 1925, The Main Line "Gang" on the Old St. Louis Division started a "Business Committee" The object of this committee was to get more business and to tell our friends who shipped and traveled something about the service the Rock Island had to offer.

Not having any place to transact our business the Chairman decided to use part of the regular caboose he was working on, an old type Corona was mounted on a wooden box, two dozen large envelopes took care of the filing system and we waded in, the reports came drifting in a bit heavier, so we rigged up an old Ford Battery to type by at night.

The modern Caboose-Office you see at the Big Show, makes its regular turn on the rear end of our fast freights just like any other caboose. We don't pay any salaries, and we let the Rock Island pay the taxes, all business managed direct from this office by Chairman and assistants, we write passing reports on cars in our trains as we handle the shipments, and your letters received by this committee are handled just as conscientiously as your letters to any other Rail Road office.



Our Rock Island Lines

EIGHT thousand three hundred and thirty three miles of modern railroad giving fast Friendly Freight and Passenger Service to our patrons in 14 great Midwestern States direct. and with connections in nearly every important city in the U. S. A.

An army of Rock Island workers, the men of the rail are working and planning with a live set of officials that we may give you the best there is in fast dependable rail transportation. October 10, 1852 this grand old railroad started rail service out of Chicago, blazing the way for the Rock Island of 1934 and all through these 82 years has kept faith with the shipping public of this great Nation.

No railroad of this age takes better care of its many patrons or carries more of the touch of human element into its operation and dealings with its many employes than this Rock Island of ours. Under the leadership of that grand old man of the rail President Jim Gorman, we are happy to be a part of this great organization and to join with our fellow workers and say to you my friend "Go Rock Island" and "Ship Rock Island".

For information as to routes and rates ask "The Rock Island Man" at any of our many offices or write to this committee, we will be happy to hear from you at any time.